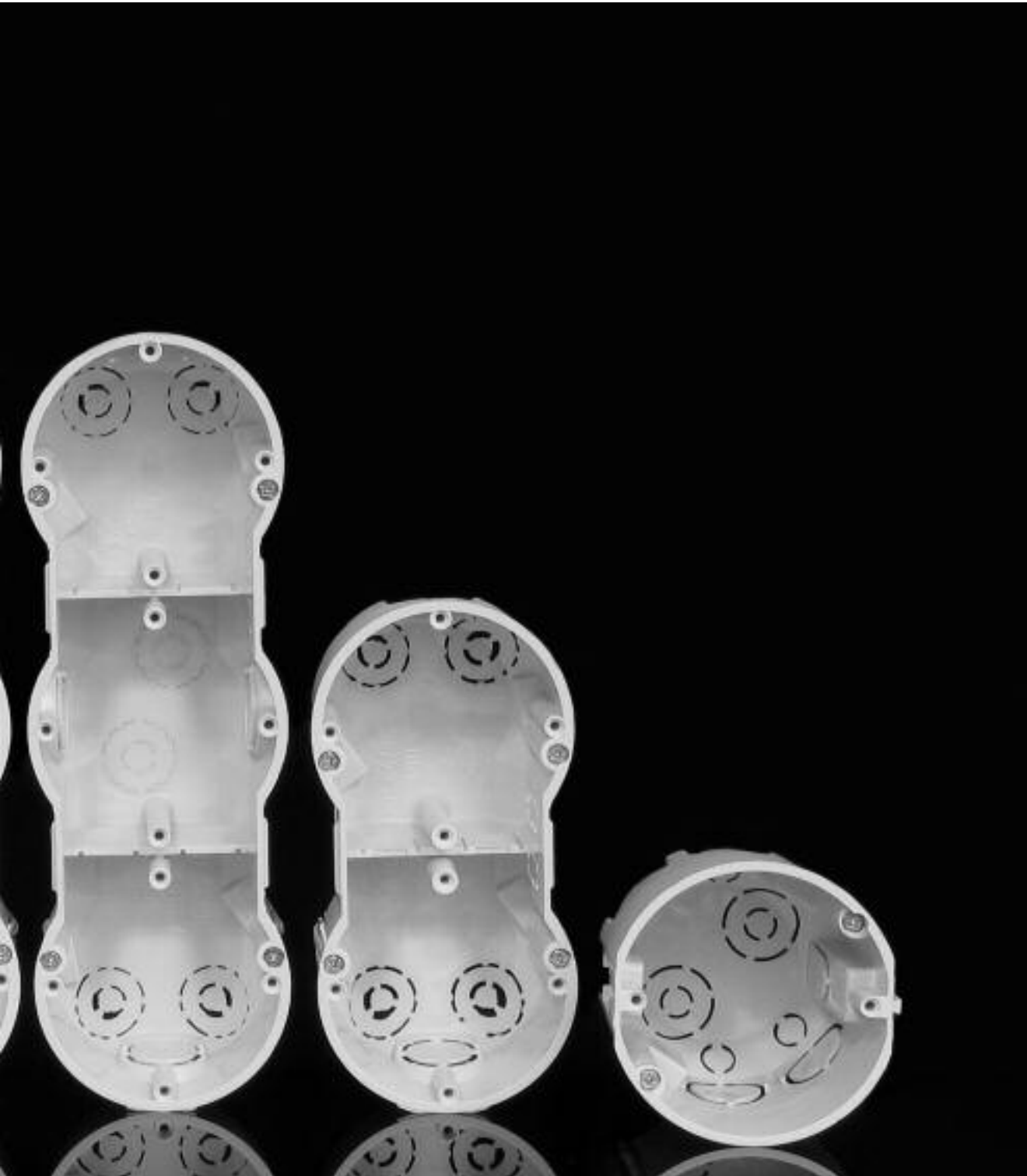


WIRING BOXES AND ACCESSORIES



Wiring boxes and accessories

In compliance with the standard ČSN EN 60 670-1 - Boxes and covers for electric accessories for house and other similar fixed electrical installations.

Under parget 1-4

Material: Hard self-snuffing polyvinylchloride (PVC) with temperature resistance from -5 °C to +60 °C.
According to the requirements of ČSN EN 60670-1 § 18, the boxes comply with the excessive-heat resistance test as well as the test with flaming loop with temperature 850 °C.
According to ČSN EN 332312 ed. 2, the company KOPOS KOLÍN and.s. as manufacturer recommends the assembly of boxes **on and into building materials** with fire reaction class from A1 to D, in accordance with ČSN EN 13501-1.
The boxes are designed for distribution system with voltage 400 V and with maximum current 16 A.
A basic color of boxes under plaster is light grey (RAL 7035). Boxes can be also produced in different colors.

Into thermal insulation 1-16

Material: Self-snuffing polypropylene (PP) with temperature resistance from -25 °C to +60 °C is used for KEZ, KEZ-3, MDZ and MDZ XL.
Self-snuffing polypropylene (PP) and polycarbonate (PC) with temperature resistance from -25°C to 60°C is used for boxes KUZ.
According to the requirements of ČSN EN 60670-1 § 18, the boxes comply with the excessive-heat resistance test as well as the test with flaming loop with temperature 850 °C.
According to ČSN EN 332312 ed. 2, the company KOPOS KOLÍN and.s. as manufacturer recommends the assembly of boxes **on and into building materials** with fire reaction class from A1 to F, in accordance with ČSN EN 13501-1. The boxes are designed for distribution system with voltage 400 V.

Into hollow walls 1-24

Material: Hard self-snuffing polyvinylchloride (PVC) with temperature resistance from -5 °C to +60 °C.
According to the requirements of ČSN EN 60670-1 § 18, the boxes comply with the excessive-heat resistance test as well as the test with flaming loop with temperature 850 °C.
According to ČSN EN 332312 ed. 2, the company KOPOS KOLÍN and.s. as manufacturer recommends the assembly of boxes **on and into building materials** with fire reaction class from A1 to F, in accordance with ČSN EN 13501-1. The boxes are designed for distribution system with voltage 400 V and with maximum current 16 A.
The KOPOS KOLÍN company, as the manufacturer, recommends using the KI 68 L/1 box and its modification for installation into construction materials with class A - C3 in compliance with the formerly valid standard ČSN 73 0862.
For all the products in the product line for hollow walls, we recommend using set of cutters supplied by us, see page 1-77 - 1-78.

Trunking boxes 1-36

Material: Hard self-snuffing polyvinylchloride (PVC) with temperature resistance from -5 °C to +60 °C.
According to the requirements of ČSN EN 60670-1 § 18, the boxes comply with the excessive-heat resistance test as well as the test with flaming loop with temperature 850 °C.
According to ČSN EN 332312 ed. 2, the company KOPOS KOLÍN and.s. as manufacturer recommends the assembly of boxes **on and into building materials** with fire reaction class from A1 to C or D, in accordance with ČSN EN 13501-1. The boxes are designed for distribution system with voltage 400 V and with maximum current 16 A.
In combination with heat-insulating pad (see page 1-73) with thickness of 5 mm made of material with reaction to fire class A1 - F the installation on flammable surfaces may be carried out without any limitation.

Closed boxes – plastic (IP 40, 54, 65, 66) 1-44

Material: Hard self-snuffing polyvinylchloride (PVC) with temperature resistance from -5 °C to +60 °C is used for boxes 8101 - 8119.
Self-snuffing polypropylene (PP) and polyethylene (PE) with temperature resistance from -5 °C to +60 °C is used for boxes 8130 and 8135.
Flame retardant polypropylene (PP) and polycarbonate (PC) with temperature resistance from -25 to +60°C is used for KSK series boxes.
According to the requirements of ČSN EN 60670-1 § 18, the boxes comply with the excessive-heat resistance test as well as the test with flaming loop with temperature 650 °C (850°C for KSK series boxes).
According to ČSN EN 332312 ed. 2, the company KOPOS KOLÍN and.s. as manufacturer recommends the assembly of boxes (with the exception of 003.CS.K and 005.CS.K types) **on and into building materials** with fire reaction class from A1 to C or D, in accordance with ČSN EN 13501-1.
In combination with 5 mm heat-insulating pad, the installation on construction materials can be carried out fire class A1 - F without limitation.
In the case of installation on construction materials with fire class A2 to C or D according to ČSN EN 13501-1 they are designed for wiring with voltage of 400 V and and current of max 16 A.
In the case of installation on construction materials with reaction to fire class A1 or with heat-insulating pad, they are designed for distribution system with voltage 500 V.
The 003.CS.K and 005.CS.K type boxes may be used only on construction materials with reaction to fire class A1.

Closed boxes – metal (IP 54) 1-55

Material: Al-alloy suitable for installation on construction materials with reaction to fire class A1 to C or D (see page 5-3). In combination with heat-insulating nonflammable pad with thickness of 5 mm made of material with reaction to fire class A1, the installation on construction materials may be carried out without any limitation.

Halogen-free (HF) 1-59

Material: PC, PPO – is self-snuffing with temperature resistance from -45 °C to +105 °C.
According to the requirements of ČSN EN 60670-1 § 18, the boxes comply with the excessive-heat resistance test as well as the test with flaming loop with temperature 850 °C.
According to ČSN EN 332312 ed. 2, the company KOPOS KOLÍN and.s. as manufacturer recommends the assembly of boxes **on and into building materials** with fire reaction class from A1 to F, in accordance with ČSN EN 13501-1 (this classification applies to KU 68 LD/1HF and KP 64/LD HF boxes). For other halogen-free junction box, the manufacturer recommends mounting on and in construction materials with fire class A1 to C or D according to ČSN EN 13 501-1.
The boxes are designed for distribution system with voltage 400 V and with maximum current 16 A.
In combination with heat-insulating non-flammable pad with thickness of 5 mm made of material (see page 1-72) over the whole contact surface, or with heat-insulating bed, the installation on construction materials may be carried out without any limitation.
The material is resistant to flame propagation and is halogen free. It is used for environment with higher concern over public and health protection.
Compared to commonly manufactured types, the junction distribution boxes differ only in used material, which is marked with the HF letters at the end of the type code.

Accessories 1-65**Terminal plates** 1-73

Terminal plates are resistant to excessive heat and burning in compliance with ČSN EN 60998-1:97 and ČSN EN 60998-2-1:97, and passed the flaming loop test 850 °C.

Help tools and utilities 1-76**Multi-purpose box KOPOBOX MINI** 1-78

Material: self-snuffing PC-ABS temperature resistance from -5 till +60°C
The system of KOPOBOX MINI boxes conforms to the requirements of ČSN EN 60670-1, Art. 18 and it conforms to the proof Test against excessive heat and burning by glowing loop of temperature 850 °C. According to ČSN EN 332312 ed. 2, the company KOPOS KOLÍN and.s. as manufacturer recommends the assembly of boxes **on and into building materials** with fire reaction class from A1 to F, in accordance with ČSN EN 13501-1.

Wiring boxes and accessories

The boxes are intended for distributions of max. voltage of 500 V. The material is resistant against spread of flame and doesn't contain halogens. The Boxes can be used at environment of higher interest for protection of persons and equipment.

Into concrete floors 1-81
 Material: Halogen-free, self-snuffing polyamide (PA) with temperature resistance from -30 °C to +105 °C and polyethylene (PE) with temperature resistance from -30 °C to +70 °C.

According to the requirements of ČSN EN 60 670-1 § 18, the boxes comply with the excessive-heat resistance test as well as the test with flaming loop with temperature 850 °C. Sets are designed for use in cast concrete floors. The boxes are designed for distribution system with voltage 500 V.

Into poured concrete 1-89

Material: Halogen-free polyethylene (PE) with temperature resistance from -30 °C to +70°C (90 °C for and short term), halogen-free polypropylene (PP) with temperature resistance from -25 °C to +105 °C, halogen-free polyamide (PA) with temperature resistance from -30 °C to +105 °C (120 °C for and short term).

According to the requirements of ČSN EN 60 670-1 § 18, the boxes comply with the excessive-heat resistance test as well as the test with flaming loop with temperature



KUZ - pg. 1-20



All boxes, accessories (except PI 80....) and terminal plates are in compliance with EU directions.

Icons - legend

material	halogen-free material
temperature resistance, scope of application (°C)	length (mm)
flaming loop test (°C)	mechanical protection
fire reaction class of underlying material	dimensions - width, height, depth (mm)
self-snuffing	number of conductors x diameter (mm ²), load-current capacity (A)
spacing when joining two boxes (mm)	milled (drilled) hole diameter (mm)
allows to install double-socket	package (pcs)
products manufactured from leadless material	accessories, additional assortment
level of protection - IP classification	tools for installation



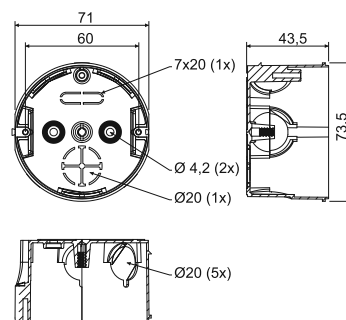
KU 68-1901

- universal box



MAT						
PVC	-5 - +60°C	850°C	A1 - D	30 sec.	71	

- ✓ Possibility to join into and continuous series with and spacing of 71 mm.
- ✓ Connection of up to three boxes in and row is recommended.
- ✓ Boxes can be joined with boxes KP 68/2, KP 68 and KPR 68.
- ✓ Possibility to insert a terminal plate and screwless terminals.
- ✓ Sold in packs (2; 10; 100 pcs).



item	conf.	description		EAN
			pcs	
KU 68-1901	KA	boxes loose in cardboard, device screws not placed in boxes	100	8595057600096

- accessories



- tools for installation



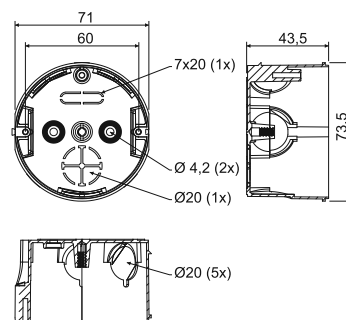
KU 68-1902

- junction box with cover



MAT				
PVC	-5 - +60°C	850°C	A1 - D	30 sec.

- ✓ To create jointing line.
- ✓ Sold in packs (100 pcs).
- ✓ Easy-to-install lid, even without tools.



item	conf.	description		EAN
			pcs	
KU 68-1902	KA	boxes loose in cardboard fitted with a cap	100	8595057600195

- accessories



- tools for installation



KU 68-1903

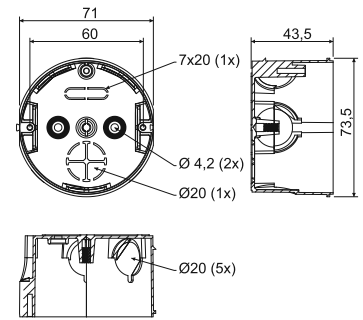
- distribution box with cover and terminal plate



MAT

PVC -5 - +60°C 850°C A1 - D 30 sec.

- ☑ Clearly arranged installation.
- ☑ High quality connection of electrical potentials using screws.
- ☑ Brass PE terminal.



item	conf.	description		EAN
			pcs	
KU 68-1903	KA	boxes loose in cardboard fitted with a cap and terminal plate	100	8595057600287

- accessories



ZV 68
pg. 1-68

TYP0...
pg. 1-75

TN 68
pg. 1-66

NR..
pg. 1-71

- tools for installation



FR 68 SDS
Ø 80 mm
pg. 1-77

KP 67/2

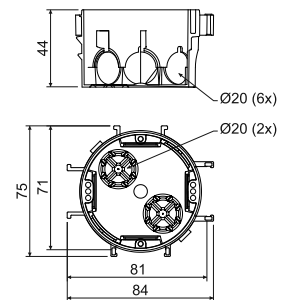
- instrument box



MAT

PVC -5 - +60°C 850°C A1 - D 30 sec. 71/81

- ☑ For modern installations in combined frames (spacing 71 mm).
- ☑ Vertical and horizontal connection with a spacing of 71 or 81 mm.
- ☑ Possibility to connect 5 boxes in a series.
- ☑ Possibility to increase axial distance with a spacer DR 18 for the design lines Element, Neo.
- ☑ Sold in packs.



item	conf.	description		EAN
			pcs	
KP 67/2	KA	boxes loose in cardboard, device screws not placed in boxes	90	8595057615496
	ST	each box fitted with an EAN label, device screws fitted in the box	90	8595057699427

- accessories



V 68
pg. 1-66

DR18
pg. 1-71

TYP0...
pg. 1-75

NR..
pg. 1-71

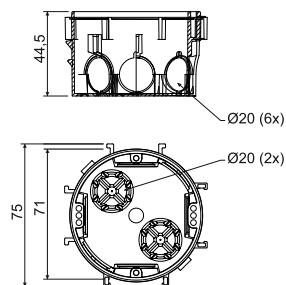
KP 67/3

- instrument box



MAT						
PVC	-5 - +60°C	850°C	A1 - D	30 sec.	71	

- ☑ Possibility to connect up to 5 boxes vertically and horizontally.
- ☑ Suitable for 2x double frame.
- ☑ When using the DR18 spacers, boxes are suitable for devices with larger widths, such as Neo.
- ☑ Sold in packs (100 pcs).



item	conf.	description		EAN
			pcs	
KP 67/3	KA	boxes loose in cardboard, device screws not placed in boxes	100	8595057650558

- accessories



V 68
pg. 1-66

DR18
pg. 1-71

TYP0...
pg. 1-75

NR..
pg. 1-71

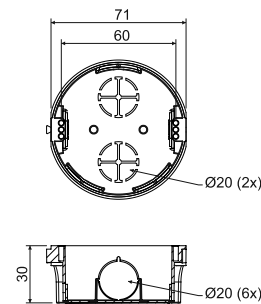
KP 68/2

- instrument box



MAT						
PVC	-5 - +60°C	850°C	A1 - D	30 sec.	71	

- ☑ Possibility to join into and continuous series with and spacing of 71 mm.
- ☑ Connection of up to three boxes in and row is recommended.
- ☑ Boxes can be joined with boxes KU 68-1901, KP 68 and KPR 68.
- ☑ Allows the installation of wiring in thin partitions.
- ☑ Sold in packs (10; 150 pcs).



item	conf.	description		EAN
			pcs	
KP 68/2	KA	boxes loose in cardboard, device screws not placed in boxes	150	8595057600089

- accessories



V 68
pg. 1-66

ZV 68
pg. 1-68

TYP0...
pg. 1-75

NR..
pg. 1-71

- tools for installation



FR 68 SDS
Ø 80 mm
pg. 1-77

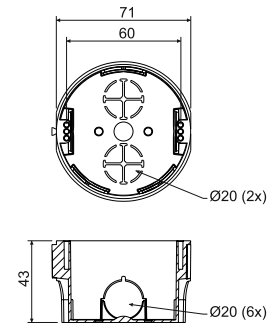
KP 68

- instrument box



MAT						
PVC	-5 - +60°C	850°C	A1 - D	30 sec.	71	

- ☑ Possibility to join into and continuous series with and spacing of 71 mm.
- ☑ Connection of up to three boxes in and row is recommended.
- ☑ Boxes can be joined with boxes KU 68-1901, KP 68/2 and KPR 68.
- ☑ Universal box for most devices.
- ☑ Sold in packs (100 pcs).



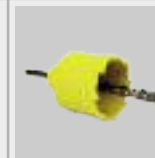
item	conf.	description		EAN
			pcs	
KP 68	KA	boxes loose in cardboard, device screws not placed in boxes	100	8595568910592

- accessories



V 68 pg. 1-66 ZV 68 pg. 1-68 TYP0... pg. 1-75 NR.. pg. 1-71

- tools for installation



FR 68 SDS
Ø 80 mm
pg. 1-77

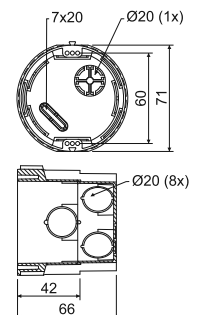
KPR 68

- instrument box



MAT						
PVC	-5 - +60°C	850°C	A1 - D	30 sec.	71	

- ☑ Easy installation of devices with big depth.
- ☑ Possibility to join into and continuous series with and spacing of 71 mm.
- ☑ Connection of up to three boxes in and row is recommended.
- ☑ Possibility to easily clamp under the device using screwless terminals.
- ☑ Boxes can be joined with boxes KU 68-1901, KP 68/2 and KP 68.
- ☑ Sold in the smallest complete packages (10 pcs).



item	conf.	description		EAN
			pcs	
KPR 68	KA	packed in packs of 10 pieces in shrink foil, packs placed in cardboard	10; 100	8595057648302

- accessories



V 68 pg. 1-66 ZV 68 pg. 1-68 TYP0... pg. 1-75 NR.. pg. 1-71

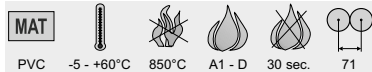
- tools for installation



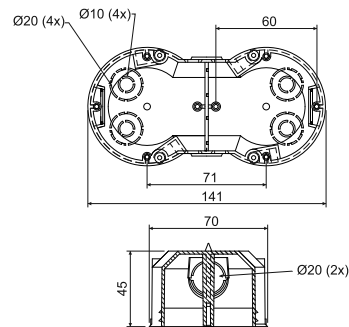
FR 68 SDS
Ø 80 mm
pg. 1-77

KP 64/2

- instrument box



- ✓ For modern installations in combined frames.
- ✓ Significant rigidity makes device installation easier.
- ✓ Sold in the smallest complete packages (2 pcs).



item	conf.	description	package	
			pcs	EAN
KP 64/2	KA	two boxes packed in shrink foil and covered with label, device screws included in the bag, packs placed in cardboard	2; 50	8595057632707

- accessories

- tools for installation



VKP 64/2L
pg. 1-67

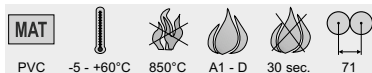
TYP0...
pg. 1-75

NR...
pg. 1-71

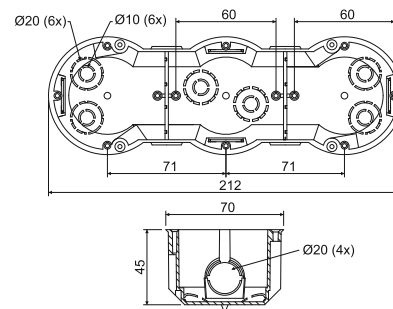
FR 68 SDS
Ø 80 mm
pg. 1-77

KP 64/3

- instrument box



- ✓ For modern installations in combined frames.
- ✓ Significant rigidity makes device installation easier.
- ✓ Sold in the smallest complete packages (2 pcs).



item	conf.	description	package	
			pcs	EAN
KP 64/3	KA	two boxes packed in shrink foil and covered with label, device screws included in the bag, packs placed in cardboard	2; 32	8595057632714

- accessories

- tools for installation



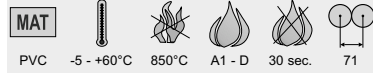
TYP0...
pg. 1-75

NR...
pg. 1-71

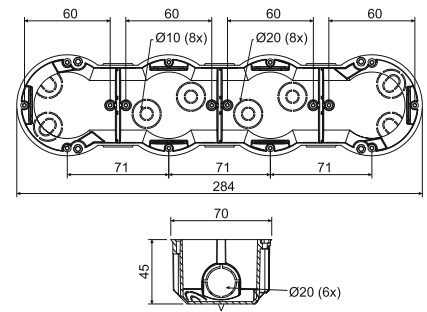
FR 68 SDS
Ø 80 mm
pg. 1-77

KP 64/4

- instrument box



- ☑ For modern installations in combined frames.
- ☑ Significant rigidity makes device installation easier.
- ☑ Sold in the smallest complete packages (2 pcs).



item	conf.	description	package	
			pcs	EAN
KP 64/4	KA	two boxes packed in shrink foil and covered with label, device screws included in the bag, packs placed in cardboard	2; 28	8595057632721

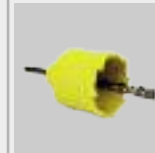
- accessories



TYP0...
pg. 1-75

NR..
pg. 1-71

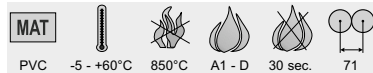
- tools for installation



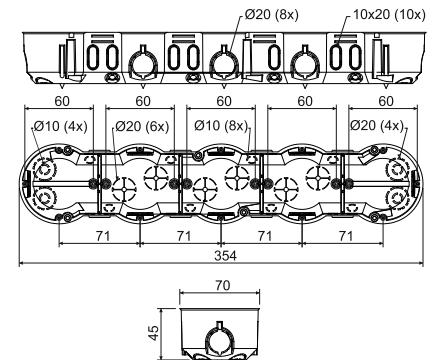
FR 68 SDS
Ø 80 mm
pg. 1-77

KP 64/5

- instrument box



- ☑ For modern installations in combined frames.
- ☑ Significant rigidity makes device installation easier.
- ☑ Sold in the smallest complete packages (2 pcs).



item	conf.	description	package	
			pcs	EAN
KP 64/5	KA	two boxes packed in shrink foil and covered with label, device screws included in the bag, packs placed in cardboard	2; 16	8595057657212

- accessories



TYP0...
pg. 1-75

NR..
pg. 1-71

- tools for installation



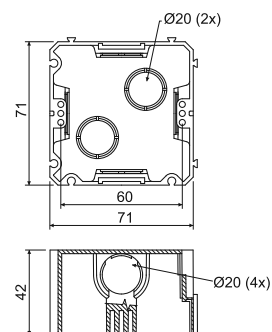
FR 68 SDS
Ø 80 mm
pg. 1-77

KP 67X67

- instrument box



- ☑ Possibility to connect up to 5 boxes vertically and horizontally.
- ☑ Suitable for 2x double frame.
- ☑ Square shape increases the mounting volume of the box.
- ☑ Spacer for a spacing of 83 mm.



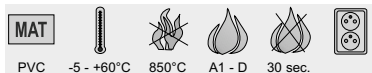
item	conf.	description	package	
			pcs	EAN
KP 67X67	KA	boxes loose in cardboard, device screws not placed in boxes	100	8595057600072

- accessories

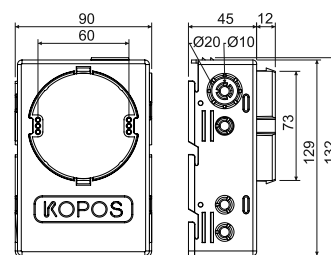
DR42
pg. 1-71TYP0...
pg. 1-75

KUH 1

- universal box



- ☑ More space in the box allows the insertion of active elements under the device.
- ☑ Possibility to insert the terminal S-66 directly under the device.
- ☑ Suitable for modern electrical system with higher space requirements.



item	conf.	description	package	
			pcs	EAN
KUH 1	KA	boxes packed individually in shrink foil, installation screws included	1; 35	8595057688445

- accessories

V 68
pg. 1-66S-66
pg. 1-73ZV 68
pg. 1-68TYP0...
pg. 1-75NR..
pg. 1-71

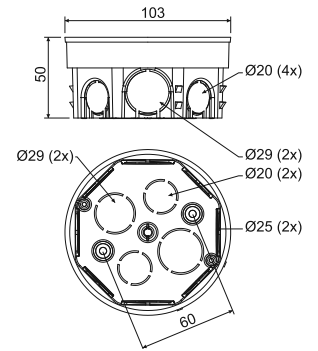
KO 97/5

- junction box with cover KO 97 V



MAT
 PVC -5 - +60°C 850°C A1 - D 30 sec.

- ☑ A large number of knockouts to make larger installations.
- ☑ Projections against ripping the box out of the wall.
- ☑ Sufficient space for terminal plate and circuit connection.



item	conf.	description	EAN	
			pcs	
KO 97/5	KA	boxes with attached lids placed in a cardboard separately	90	8595057600164

- accessories



ZV 97
pg. 1-68

S-96
pg. 1-73

SP-96
pg. 1-73

TYP0...
pg. 1-75

TN 97
pg. 1-66

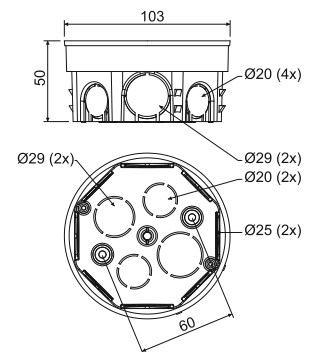
KR 97/5

- junction box with cover KO 97 V and terminal plate SP-96



MAT
 PVC -5 - +60°C 850°C A1 - D 30 sec.

- ☑ A large number of knockouts to make larger installations.
- ☑ Projections against ripping the box out of the wall.
- ☑ Sufficient space for terminal plate and circuit connection.



item	conf.	description	EAN	
			pcs	
KR 97/5	KA	terminal plate SP-96 screwed into the box, lids included and each box placed into cardboard	80	8595057600256

- accessories



ZV 97
pg. 1-68

S-96
pg. 1-73

TYP0...
pg. 1-75

TN 97
pg. 1-66

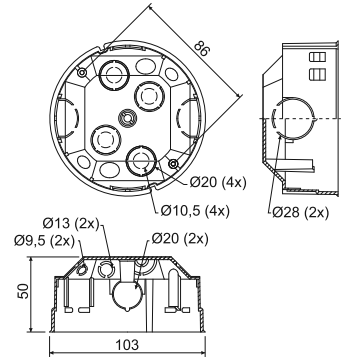
KOM 97

- junction box with cover KO 97 V



MAT
 PVC -5 - +60°C 850°C A1 - D 30 sec.

- ✓ A large number of knockouts to make larger installations.
- ✓ Projections against ripping the box out of the wall.
- ✓ Sufficient space for terminal plate and circuit connection.



item	conf.	description	EAN	
			pcs	
KOM 97	KA	boxes with attached lids placed in a cardboard separately	40	8595057632752

- accessories



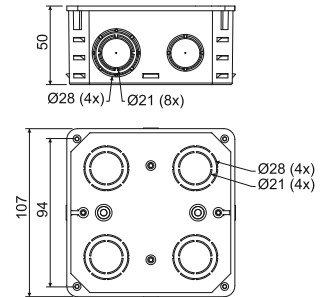
KO 100

- box with cover



MAT
 PVC -5 - +60°C 850°C A1 - D 30 sec.

- ✓ A large number of knockouts for inserting cables and pipes.



item	conf.	description	EAN	
			pcs	
KO 100	KA	individual boxes and lids packed in cardboard	74	8595057600133

- accessories



KO 100 E

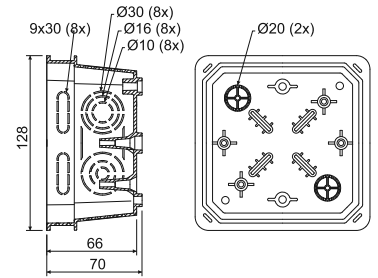
- box with cover V 100 E



MAT

PVC -5 - +60°C 850°C A1 - D 30 sec.

- ☑ A large number of knockouts for inserting cables and pipes.
- ☑ Possibility to install the support trunking TS 35.
- ☑ Possibility to set the lid in and horizontal position.
- ☑ Possibility to break the sidewall for easier cable handling.



item	conf.	description		EAN
			pcs	
KO 100 E	KA	individual boxes and lid packings placed in cardboard	40	8595057612655

- accessories



KO 125

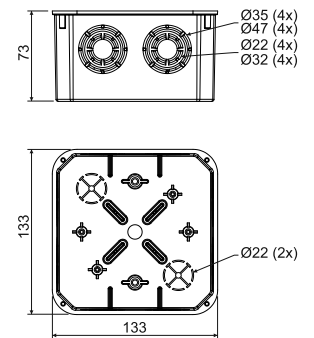
- box with cover KO 125 V



MAT

PVC -5 - +60°C 850°C A1 - D 30 sec.

- ☑ A large number of knockouts for inserting cables and pipes.
- ☑ Possibility to install the support trunking TS 35 and terminal plates.



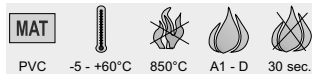
item	conf.	description		EAN
			pcs	
KO 125	KA	each box packed individually in shrink foil and labelled	1; 34	8595057600140

- accessories

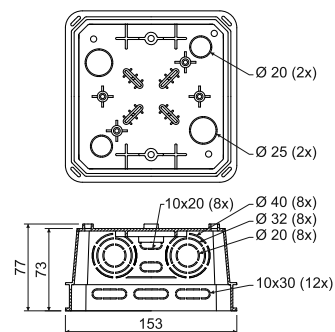


KO 125 E

- box with cover V 125/1



- ✓ A large number of knockouts for inserting cables and pipes.
- ✓ Possibility to install the support trunking TS 35.
- ✓ Possibility to set the lid in and horizontal position.
- ✓ Possibility to break the sidewall for easier cable handling.



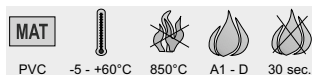
item	conf.	description	package	
			pcs	EAN
KO 125 E	KA	each box packed individually in shrink foil and labelled	1; 20	8595057612587

- accessories

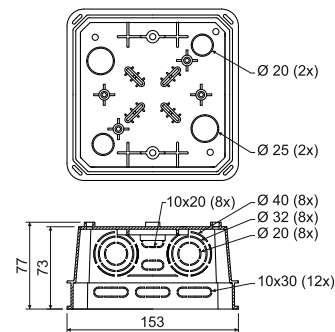
V 125/1
pg. 1-67S-66
pg. 1-73S-96
pg. 1-73SP-96
pg. 1-73EPS 3
pg. 1-75TYP0...
pg. 1-75TS35
pg. 2-67

KO 125 E/EQ02

- box with cover and equipotential terminal



- ✓ Equipotential terminal plates for 5 wires of 25 mm and 1 flat wire of 30x4 mm.
- ✓ A large number of knockouts for inserting cables and pipes.
- ✓ Possibility to set the lid in and horizontal position.
- ✓ Possibility to break the sidewall for easier cable handling.



item	conf.	description	package	
			pcs	EAN
KO 125 E/EQ02	KA	each box packed individually in shrink foil and labelled	1; 20	8595568909169

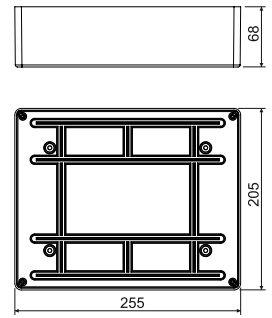
KT 250

- junction box



MAT
 PVC -5 - +60°C 850°C A1 - D 30 sec.

- Boxes for communication and power distribution.
- At the bottom of the box are grooves for mounting the telephone terminals.
- Suitable for surface mounting - lid follows the size of the box.
- Boxes without preformed knockouts.



item	conf.	description		EAN
			pcs	
KT 250	KB	individual boxes packed in shrink foil, labelled and placed in cardboard	1; 11	8595057600294

- accessories

KT 250 V pg. 1-67 S-66 pg. 1-73 S-96 pg. 1-73 SP-96 pg. 1-73 TYP0... pg. 1-75 TS35 pg. 2-67

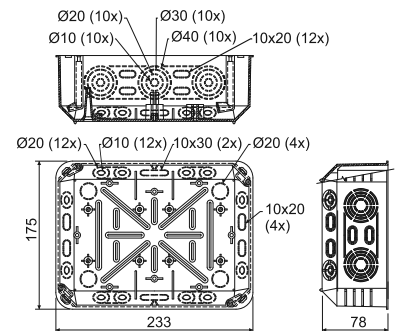
KT 250/1

- box with cover VKT 250/L



MAT
 PVC -5 - +60°C 850°C A1 - D 30 sec.

- A large number of knockouts for inserting cables and pipes.
- Possibility to install support trunking TS 35 and equipotential terminal plate.
- Option to set the lid using oval holes in the box to the horizontal position.
- Possibility to break the sidewall for easier cable handling.



item	conf.	description		EAN
			pcs	
KT 250/1	KB	individual boxes packed in shrink foil, labelled and placed in cardboard	1; 12	8595057632738

- accessories

VKT 250/L pg. 1-67 S-66 pg. 1-73 S-96 pg. 1-73 SP-96 pg. 1-73 EPS 3 pg. 1-75 TYP0... pg. 1-75 TS35 pg. 2-67

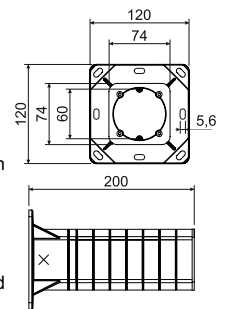
KEZ

- installation box into thermal insulation



MAT					
PP	-25 - +60°C	850°C	A1 - F	30 sec.	

- ✓ For device installation in insulated building facades with a thickness from 50 - 200 mm.
- ✓ Eliminates thermal bridging.
- ✓ Included in the packaging are high quality wall plugs and screws for mounting. When installing on a rough surface, we recommend to seal the device with silicone.
- ✓ Robust construction.
- ✓ See assembly video at www.kopos.com
- ✓ **The product of the year 2013, 2014** - a group of products to the thermal insulation was selected by the experts at the AMPER trade fair 2014 and 2015 as the product of the year.



item	conf.	description		EAN
			pcs	
KEZ	KB	individual boxes packed in separate cardboard	1	8595057698499



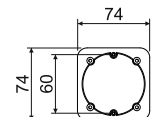
ND KEZ

- spare part wiring box for thermal insulation



MAT					
PP	-25 - +60°C	850°C	A1 - F	30 sec.	

- ✓ The spare part wiring box for thermal insulation is an individual wiring box, normally supplied with the KEZ set.
- ✓ The box must be used in combination with the supporting tube only, by means of standard assembly procedure.
- ✓ The separate use of this spare part, without the supporting tube, is not possible.
- ✓ Four self-tapping screws for fixing the box to the tube are normally supplied with the spare part.



item	conf.	description		EAN
			pcs	
ND KEZ	KB	individual boxes packed in shrink foil, supplied in carton package (36 pcs)	1	8595568925275



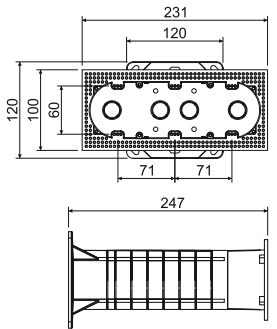
KEZ-3

- multiple electroinstallation box into thermal insulation



MAT					
PP	-25 - +60°C	850°C	A1 - F	30 sec.	71

- ✓ For doubled or tripled device installation in insulated building facades with a thickness from 100 - 250 mm.
- ✓ Eliminates thermal bridging.
- ✓ The package includes quality wall plugs, screws for mounting and a partition to separate multiple circuits.
- ✓ When installing on a rough surface, we recommend to seal the device with silicone.
- ✓ Robust construction.
- ✓ See assembly video at www.kopos.com
- ✓ **The product of the year 2013, 2014** - a group of products to the thermal insulation was selected by the experts at the AMPER trade fair 2014 and 2015 as the product of the year.



item	conf.	description		EAN
			pcs	
KEZ-3	KB	individual boxes packed in separate cardboard	1	8595568910561



MDZ

- mounting desk into thermal insulation



MAT	Temperature	Fire Resistance	Flaming Loop Test	Self-snuffing	Package
PP	-25 - +60°C	850°C	A1 - F	30 sec.	

✓ For the installation of electrical devices (outdoor lights, motion sensors, 400 V sockets, etc.) on thermally insulated buildings facades with a thickness from 50 to 200 mm.

✓ Eliminates thermal bridging.

✓ Load of 40 N at a distance of 180 mm from the wall.

✓ Possibility to create areas of any size when using multiple mounting plates.

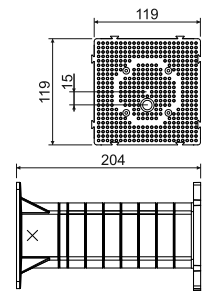
✓ The package includes quality wall plugs and screws for mounting.

✓ Screws with a diameter of 4 to 5 mm are suitable for the mounting desk.

✓ Robust construction.

✓ See assembly video at www.kopos.com

✓ **The product of the year 2013, 2014** - a group of products to the thermal insulation was selected by the experts at the AMPER trade fair 2014 and 2015 as the product of the year.

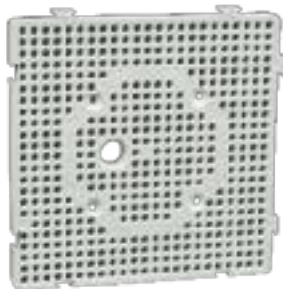


item	conf.	description	box	EAN
			pcs	
MDZ	KB	individual mounting plates are packed in separate cardboard	1	8595057698505



ND MDZ

- spare part mounting desk for thermal insulation



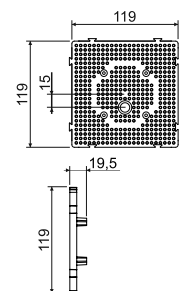
MAT	Temperature	Fire Resistance	Flaming Loop Test	Self-snuffing	Package
PP	-25 - +60°C	850°C	A1 - F	30 sec.	

✓ The spare part mounting desk for thermal insulation is an individual plate, normally supplied with the MDZ set.

✓ The plate must be used in combination with the supporting tube only, by means of standard assembly procedure.

✓ The separate use of this spare part, without the supporting tube, is not possible.

✓ Four self-tapping screws for fixing of the plate to the tube are normally supplied with the spare part.



item	conf.	description	box	EAN
			pcs	
ND MDZ	KB	individual mounting plates packed in shrink foil, supplied in carton package (30 pcs)	1	8595568925282



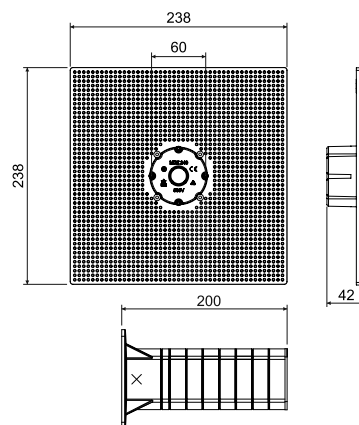
MDZ XL

- mounting desk into thermal insulation



MAT				
PP	-25 - +60°C	850°C	A1 - F	30 sec.

- ✓ For the installation of electrical devices (outdoor lights, motion sensors, 400 V sockets, etc.) on thermally insulated buildings facades with a thickness from 50 to 200 mm.
- ✓ Eliminates thermal bridging.
- ✓ Load of 40 N at a distance of 180 mm from the wall.
- ✓ 4 times larger area than standard MDZ.
- ✓ Included in the package are high quality dowels, screws and carrying lid.
- ✓ Screws with a diameter of 4 to 5 mm are suitable for the mounting desk.
- ✓ Robust construction.



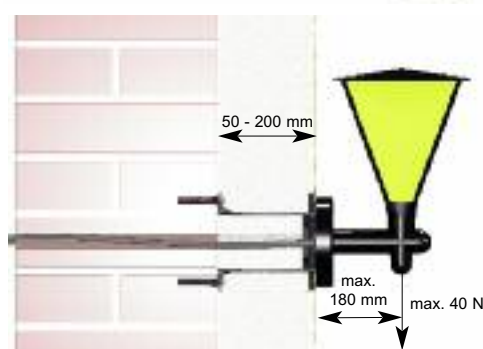
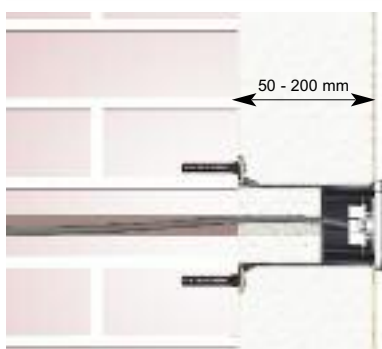
item	conf.	description		EAN
			pcs	
MDZ XL	KB	individual mounting plates are packed in separate cardboard	1	8595568930491

Assembling system into thermal insulation

KEZ - installation box into thermal insulation



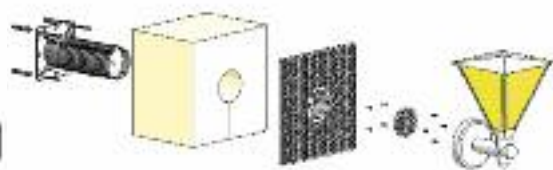
MDZ - mounting desk into thermal insulation



KEZ-3 - multiple electroinstallation box into thermal insulation



MDZ XL - mounting desk into thermal insulation



There is necessary to cut the carrier including inserted insulation before installation depending on layer thickness insulation. The carrier is fixed to the wall with twists and dowels depending on type of the wall surface. For installation of 400 V plug we recommend to fasten the carrier with chemical anchors. The finally installation of box or mounting plate should be done by 4 added screws.



KUZ - universal box not only
into thermal insulation

KUZ-V



KUZ-VO



KUZ-VI



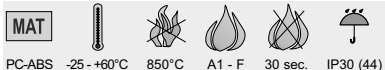
KUZ-VOI



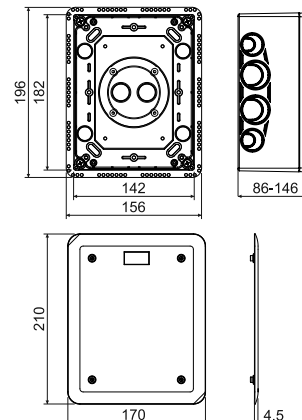
More information at www.kopos.com

KUZ-V

- universal box to thermal insulation with a lid



- ☑ For installation to facades with thermal insulation with a thickness from 80 to 140 mm, or as boxes under parget.
- ☑ Use as a junction box, for lightning rod measuring clamp and other applications according to the customer.
- ☑ Adjustable depth of the box.
- ☑ The configuration includes a box and a flat lid V 180 + stainless steel screws.
- ☑ When installed on exterior plaster it is recommended to seal the lid with silicone or rubberbased window seal (IP 44).
- ☑ Robust construction.
- ☑ Protected by European industrial design.
- ☑ See assembly video at www.kopos.com



item	conf.	description	EAN	
			pcs	
KUZ-V	KB	individual boxes packed in separate cardboard	1	8595568923660

- accessories



S-KSK 2
pg. 1-47

TS35
pg. 2-67

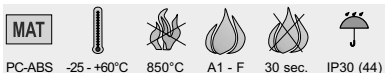
TYP0...
pg. 1-75

montage:

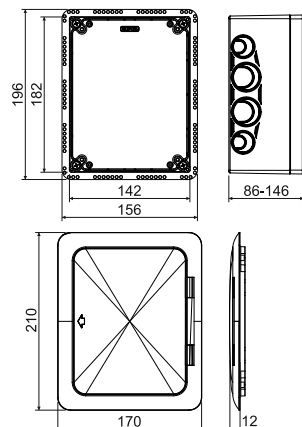


KUZ-VO

- universal box to thermal insulation with an opening lid



- ☑ For installation to facades with thermal insulation with a thickness from 80 to 140 mm, or as boxes under parget.
- ☑ Use as a junction box, for lightning rod measuring clamp and other applications according to the customer.
- ☑ Adjustable depth of the box.
- ☑ The configuration includes a box and an opening lid VO 180, inner mounting desk and stainless steel screws.
- ☑ When installed on exterior plaster it is recommended to seal the lid with silicone or rubberbased window seal (IP 44).
- ☑ Robust construction.
- ☑ Protected by European industrial design.
- ☑ See assembly video at www.kopos.com



item	conf.	description	EAN	
			pcs	
KUZ-VO	KB	individual boxes packed in separate cardboard	1	8595568923677

- accessories



TS35
pg. 2-67

PN KUZ
pg. 1-23

TYP0...
pg. 1-75

montage:



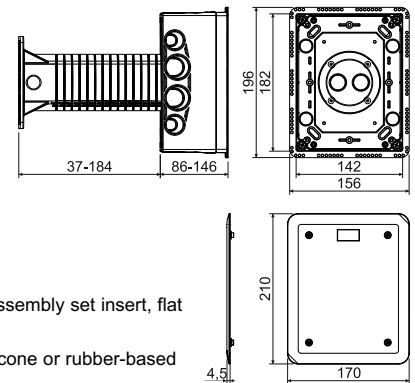
KUZ-VI

- universal box to thermal insulation with a tube and a lid



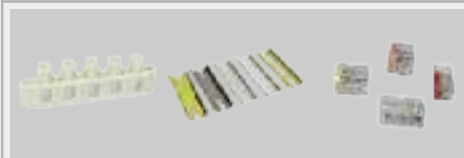
MAT					
tube - PP	-25 - +60°C	850°C	A1 - F	30 sec.	IP30 (44)
box - PC-ABS					

- ✓ For device installation in insulated building facades with a thickness from 120 - 300 mm.
- ✓ Use as a junction box, for lightning rod measuring clamp and other applications according to the customer.
- ✓ Eliminates thermal bridging.
- ✓ Adjustable depth of the box.
- ✓ The configuration includes a box, a tube, external and internal insulation, assembly set insert, flat lid V 180 and stainless steel screws.
- ✓ When installed on exterior plaster it is recommended to seal the lid with silicone or rubber-based window seal (IP 44).
- ✓ Robust construction.
- ✓ Protected by European industrial design.
- ✓ See assembly video at www.kopos.com



item	conf.	description	EAN	
			pcs	
KUZ-VI	KB	individual boxes packed in separate cardboard	1	8595568923684

- accessories

S-KSK 2
pg. 1-47TS35
pg. 2-67TYP0...
pg. 1-75

montage:



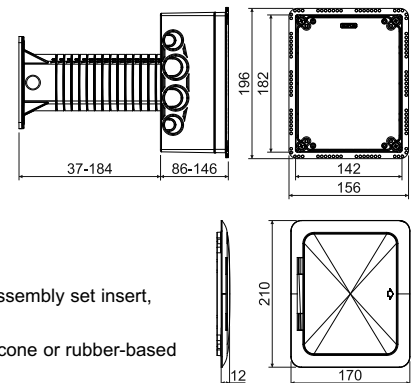
KUZ-VOI

- universal box to thermal insulation with a tube and an opening lid



MAT					
tube - PP	-25 - +60°C	850°C	A1 - F	30 sec.	IP30 (44)
box - PC-ABS					

- ✓ For device installation in insulated building facades with a thickness from 120 - 330 mm.
- ✓ Use as a junction box, for lightning rod measuring clamp and other applications according to the customer.
- ✓ Eliminates thermal bridging.
- ✓ Adjustable depth of the box.
- ✓ The configuration includes a box, a tube, external and internal insulation, assembly set insert, opening lid VO 180, mounting desk desk and stainless steel screws.
- ✓ When installed on exterior plaster it is recommended to seal the lid with silicone or rubber-based window seal (IP 44).
- ✓ Robust construction.
- ✓ Protected by European industrial design.
- ✓ See assembly video at www.kopos.com



item	conf.	description	EAN	
			pcs	
KUZ-VOI	KB	individual boxes packed in separate cardboard	1	8595568923691

- accessories

TS35
pg. 2-67PN KUZ
pg. 1-23TYP0...
pg. 1-75

montage:

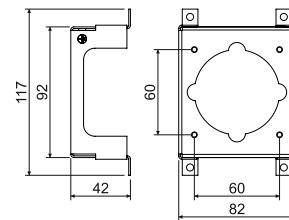


PN KUZ - instrument carrier

MAT
steel



- ☑ The instrument holder for the assembly of built-in 400 V (16 A) sockets.
- ☑ Installation under the assembly plate supplied with the KUZ-VO and KUZ-VOI sets.
- ☑ Contains a screw M4X6 and a lock washer for grounding.
- ☑ Spacing for socket mounting is 60 mm.
- ☑ Surface finish ZNCR.
- ☑ Please remove mounting posts inside the KUZ box prior to the installation.



item	conf.	description	package	
			pcs	EAN
PN KUZ	S	pack of 1 piece in foil	1	8595568923844

Mounting the KUZ system to thermal insulation



KUZ-V - universal box to thermal insulation with a lid

KUZ-VI - universal box to thermal insulation with a tube and a lid



KUZ-VO - universal box to thermal insulation with an opening lid

KUZ-VOI - universal box to thermal insulation with a tube and an opening lid



Wiring boxes in flammable materials

The selection of wiring boxes to hollow walls represents products suitable for wiring in wooden structures, in wooden cottages, log cabins and log houses, as well as during the construction of prefabricated houses with a wooden structure.



- for installation in flammable walls, ceilings or floors - construction materials with fire classes A1 to F (according to ČSN EN 13501-1)
- air proof boxes and classic design
- boxes of larger sizes for larger wiring
- multiple variants
- deep boxes for modern wiring



statement of flammability of boxes to hollow walls



KUL 68-45/LD

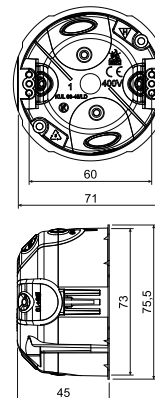
- universal box



MAT | | | | | |

PVC -5 - +60°C 850°C A1 - F 30 sec.

- ☑ Inlet openings made of flexible material.
- ☑ The installation of the cable is done by pulling the pre-pressed inlet on the flexible membranes and inserting the cable or pipe into the hole formed.
- ☑ Air proofed even with inserted cable or pipe.
- ☑ Suitable for low energy and passive houses.
- ☑ The fixing screws as well as the instrument screws are double-threaded for quick installation; the box has plastic flanges.
- ☑ Prevents airflow through the installation.
- ☑ Sold in packs (100 pcs).
- ☑ When mounting, it is not necessary to countersink the plasterboard edge.
- ☑ When using the V 68 cap the IP 30 is reached.



item	conf.	description		EAN
			pcs	
KUL 68-45/LD	NA	the box is fitted with screws for fixing onto plasterboard and with instrument screws	100	8595568929709

- accessories

- tools for installation



V 68
pg. 1-66

S-66
pg. 1-73

TYPO...
pg. 1-75



VDS 68
Ø 73,5 mm
pg. 1-77

VPTU: VPT 68
Ø 73,5 mm
pg. 1-76

KUL 68-45/LD2

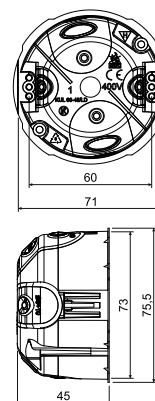
- universal box with cover V 68



MAT | | | | | | |

PVC -5 - +60°C 850°C A1 - F 30 sec. IP30

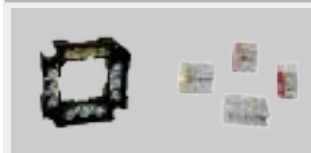
- ☑ Inlet openings made of flexible material.
- ☑ The installation of the cable is done by pulling the pre-pressed inlet on the flexible membranes and inserting the cable or pipe into the hole formed.
- ☑ Air proofed even with inserted cable or pipe.
- ☑ Suitable for low energy and passive houses.
- ☑ Mounting screws are fitted with a double thread for quick installation, the box includes plastic feet.
- ☑ Prevents airflow through the installation.
- ☑ Sold in packs.
- ☑ When mounting, it is not necessary to countersink the plasterboard edge.



item	conf.	description		EAN
			pcs	
KUL 68-45/LD2	NA	the box is fitted with screws for fixing onto plasterboard and with instrument screws, the lid is screwed onto the box	100	8595568930644

- accessories

- tools for installation



S-66
pg. 1-73

TYPO...
pg. 1-75

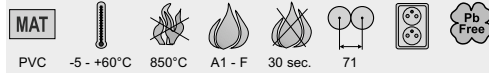


VDS 68
Ø 73,5 mm
pg. 1-77

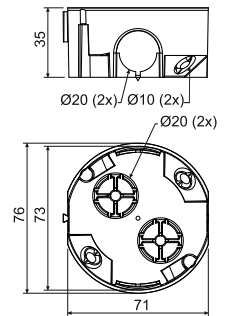
VPTU: VPT 68
Ø 73,5 mm
pg. 1-76

KU 68/71L1

- universal box



- ✓ Connection in a continuous series with axial distance of 71 mm.
- ✓ Possibility to connect 3 boxes in a series.
- ✓ Integrated tip to mark the centre of drilling.
- ✓ Jointed boxes can be interconnected using single insulated wires.
- ✓ Connectable with the box KPR 68/71L.
- ✓ Mounting screws are fitted with a triple thread for quick installation.
- ✓ When mounting, it is not necessary to countersink the plasterboard edge.

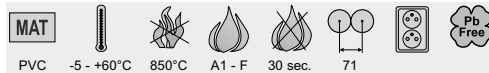


item	conf.	description	EAN	
			pcs	
KU 68/71L1	NA	boxes fitted with screws for mounting into double wall, device screws packed separately	120	8595057688414

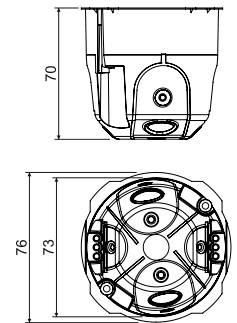
- accessories			- tools for installation	
V 68 pg. 1-66	S-66 pg. 1-73	TYP0... pg. 1-75	VDS 68 Ø 73,5 mm pg. 1-77	VPTU: VPT 68 Ø 73,5 mm pg. 1-76

KPRL 68-70/LD

- universal box



- ✓ Inlet openings made of flexible material.
- ✓ The cable or tube installation is performed by extracting the pre-pressed inlet to the flexible membranes and then inserting the required item into the opening.
- ✓ Installation box in the hole is made by tightening mounting screws.
- ✓ Air proofed even with inserted cable or pipe.
- ✓ Suitable for low energy and passive houses.
- ✓ The fixing screws as well as the instrument screws are double-threaded for quick installation; the box has plastic flanges.
- ✓ The connecting pieces for the assembly of boxes with pitch 71 mm are part of the set; during assembly it is necessary to remove the pre-marked part of the box edge.
- ✓ When mounting, it is not necessary to countersink the plasterboard edge.
- ✓ Minimum unit for sale - 8 pcs.
- ✓ When using the V 68 cap the IP 30 is reached.



item	conf.	description	EAN	
			pcs	
KPRL 68-70/LD	NA	packed in 8-pc packages in shrink foil, packs aligned in cardboard	8; 96	8595568925879

- accessories			- tools for installation	
V 68 pg. 1-66	TYP0... pg. 1-75		VDS 68 Ø 73,5 mm pg. 1-77	VPTU: VPT 68 Ø 73,5 mm pg. 1-76

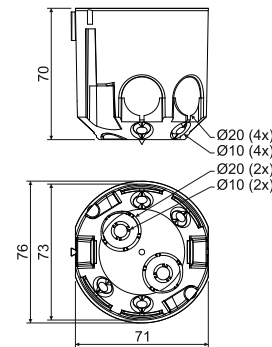
KPR 68/71L

- universal box



MAT | -5 - +60°C | 850°C | A1 - F | 30 sec. | 71 | |

- ✓ Easy installation of devices with big depth.
- ✓ Connection in a continuous series with axial distance of 71 mm.
- ✓ Possibility to insert terminal S-66.
- ✓ Integrated tip to mark the centre of drilling.
- ✓ Jointed boxes can be interconnected using single insulated wires.
- ✓ Mounting screws are fitted with a triple thread for quick installation.
- ✓ Sold in packs.
- ✓ When mounting, it is not necessary to countersink the plasterboard edge.



item	conf.	description	package	
			pcs	EAN
KPR 68/71L	NA	individual boxes fitted with screws for mounting into double wall	60	8595057687929

- accessories



V 68
pg. 1-66

S-66
pg. 1-73

TYP0...
pg. 1-75

- tools for installation



VDS 68
Ø 73,5 mm
pg. 1-77

VPTU; VPT 68
Ø 73,5 mm
pg. 1-76

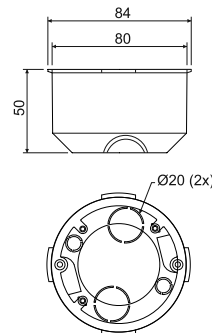
KI 68 L/1

- junction box



MAT | -5 - +60°C | 850°C | A - C3 | 30 sec. | | |

- ✓ According to the formerly valid standard ČSN 73 0862 the box complies with materials of fire classes A - C3.
- ✓ Special added outer sheat.
- ✓ Mounting screws are fitted with a triple thread for quick installation.



item	conf.	description	package	
			pcs	EAN
KI 68 L/1	NA	individual boxes fitted with screws for mounting into double wall	80	8595057600119

- accessories

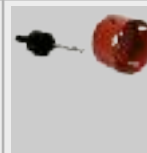


V 68
pg. 1-66

S-66
pg. 1-73

TYP0...
pg. 1-75

- tools for installation



VPTU; VPT 79
Ø 79,5 mm
pg. 1-76

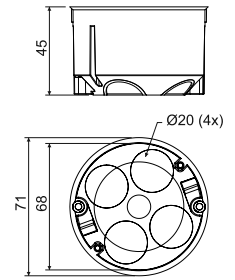
KP 64/LD

- instrument box



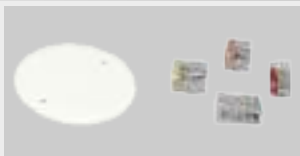
MAT					
PVC	-5 - +60°C	850°C	A1 - F	30 sec.	Pb Free

- ✓ Inlet openings made of flexible material.
- ✓ Cable installation is performed by perforating the membrane with a sharp tool (e.g. screwdriver) and then inserting the cable, or by extracting the pre-pressed membrane inlet.
- ✓ Air proofed even with inserted cable or pipe.
- ✓ Suitable for low energy and passive houses.
- ✓ Mounting screws are fitted with a triple thread for quick installation.
- ✓ Prevents airflow through the installation.
- ✓ Sold in packs (100 pcs).
- ✓ When mounting, it is not necessary to countersink the plasterboard edge.



item	conf.	description		EAN
			pcs	
KP 64/LD	NA	boxes fitted with screws for mounting the box to double wall, device screws are fitted in boxes	100	8595568909305

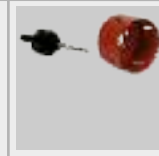
- accessories



V 68
pg. 1-66

TYP0...
pg. 1-75

- tools for installation



VPTU; VPT 64
Ø 68 mm
pg. 1-76

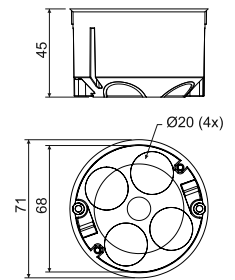
KPRL 64-60/LD

- instrument box



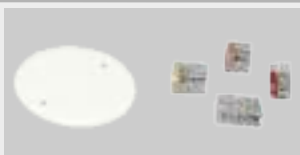
MAT					
PVC	-5 - +60°C	850°C	A1 - F	30 sec.	Pb Free

- ✓ Inlet openings made of flexible material.
- ✓ The installation of the cable is done by pulling the pre-pressed inlet on the flexible membranes and inserting the cable or pipe into the hole formed.
- ✓ Installation box in the hole is made by tightening mounting screws.
- ✓ Air proofed even with inserted cable or pipe.
- ✓ Suitable for low energy and passive houses.
- ✓ The fixing screws as well as the instrument screws are double-threaded for quick installation; the box has plastic flanges.
- ✓ When mounting, it is not necessary to countersink the plasterboard edge.
- ✓ When using the V 68 cap the IP 30 is reached.



item	conf.	description		EAN
			pcs	
KPRL 64-60/LD	NA	the box is fitted with screws for fixing onto plasterboard and with instrument screws, pack loosely in a box	84	8595568929921

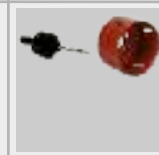
- accessories



V 68
pg. 1-66

TYP0...
pg. 1-75

- tools for installation



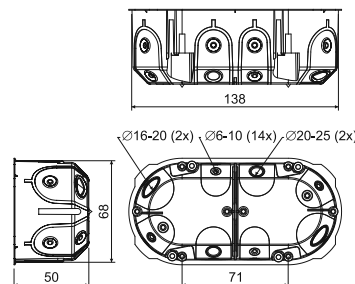
VPTU; VPT 64
Ø 68 mm
pg. 1-76

KPL 64-50/2LD

- instrument box



- ☑ For modern installations in combined frames.
- ☑ Highly rigid design makes the device installation simpler.
- ☑ Inlet openings made of flexible material.
- ☑ Air proofed even with inserted cable or pipe.
- ☑ Prevents airflow through the installation.
- ☑ Suitable for low energy and passive houses.
- ☑ Two tips on the external side indicate the drilling points.
- ☑ Mounting bolts feature double-threaded design for quick installation.
- ☑ Installation box in the hole is made by tightening mounting screws.
- ☑ Cable installation is done by removing (breaking) pre-pressed membrane inlet and followed by inserting the cable possibly pipe.
- ☑ Protected by European industrial design.
- ☑ Sold in packs (40 pcs).
- ☑ When mounting, it is not necessary to countersink the plasterboard edge.



item	conf.	description	EAN	
			pcs	
KPL 64-50/2LD	NA	the box is fitted with screws for fixing onto plasterboard and with instrument screws, pack loosely in a box	40	8595568926968



- accessories

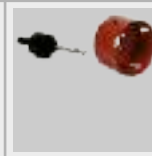


- tools for installation



VKP 64/2L
pg. 1-67

TYP0...
pg. 1-75



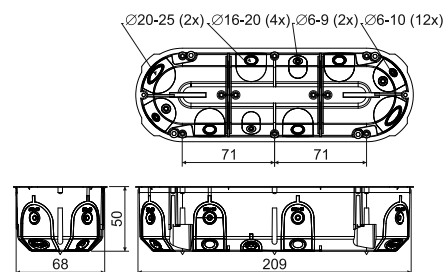
VPTU; VPT 64
Ø 68 mm
pg. 1-76

KPL 64-50/3LD

- instrument box



- ☑ For modern installations in combined frames.
- ☑ Highly rigid design makes the device installation simpler.
- ☑ Inlet openings made of flexible material.
- ☑ Air proofed even with inserted cable or pipe.
- ☑ Prevents airflow through the installation.
- ☑ Suitable for low energy and passive houses.
- ☑ Three tips on the external side indicate the drilling points.
- ☑ Mounting bolts feature double-threaded design for quick installation.
- ☑ Installation box in the hole is made by tightening mounting screws.
- ☑ Cable installation is done by removing (breaking) pre-pressed membrane inlet and followed by inserting the cable possibly pipe.
- ☑ Protected by European industrial design.
- ☑ Sold in packs (30 pcs).
- ☑ When mounting, it is not necessary to countersink the plasterboard edge.



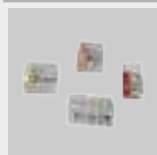
item	conf.	description	EAN	
			pcs	
KPL 64-50/3LD	NA	the box is fitted with screws for fixing onto plasterboard and with instrument screws, pack loosely in a box	30	8595568927705



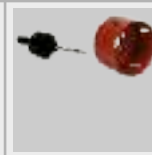
- accessories



- tools for installation



TYP0...
pg. 1-75



VPTU; VPT 64
Ø 68 mm
pg. 1-76

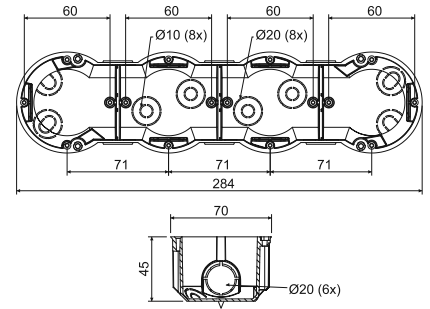
KP 64/4L

- instrument box

MAT PVC -5 - +60°C 850°C A1 - F 30 sec. 71



- ✓ For modern installations in combined frames.
- ✓ Significant rigidity makes device installation easier.
- ✓ Four tips on the external side indicate the drilling points.
- ✓ Mounting screws are fitted with a triple thread for quick installation.
- ✓ Sold in the smallest complete packages (2 pcs).
- ✓ When mounting, it is not necessary to countersink the plasterboard edge.



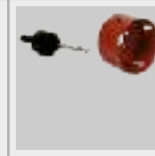
item	conf.	description		EAN
			pcs	
KP 64/4L	NA	two boxes packed in shrink foil and covered with label, screws included in the bag, packs aligned in cardboard	2; 28	8595057632776
	ST	individual boxes fitted with screws for mounting into double wall and covered with label, device screws are fitted in boxes	28	8595568903624

- accessories



TYP0...
pg. 1-75

- tools for installation



VPTU; VPT 64
Ø 68 mm
pg. 1-76

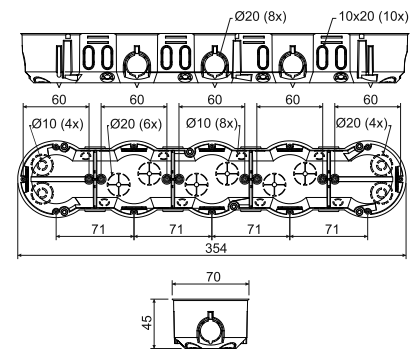
KP 64/5L

- instrument box

MAT PVC -5 - +60°C 850°C A1 - F 30 sec. 71



- ✓ For modern installations in combined frames.
- ✓ Significant rigidity makes device installation easier.
- ✓ Five tips on the external side indicate the drilling points.
- ✓ Mounting screws are fitted with a triple thread for quick installation.
- ✓ Sold in the smallest complete packages (2 pcs).
- ✓ When mounting, it is not necessary to countersink the plasterboard edge.



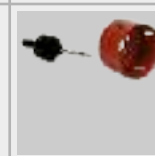
item	conf.	description		EAN
			pcs	
KP 64/5L	NA	two boxes packed in shrink foil and covered with label, screws included in the bag, packs aligned in cardboard	2; 16	8595057657229
	ST	individual boxes fitted with screws for mounting into double wall and covered with label, device screws are fitted in boxes	16	8595568903631

- accessories



TYP0...
pg. 1-75

- tools for installation



VPTU; VPT 64
Ø 68 mm
pg. 1-76

KO 97/L

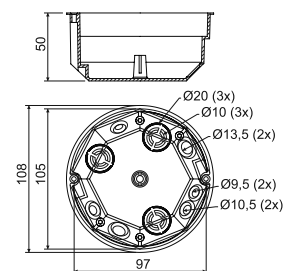
- junction box with cover KO 97 V/1



MAT

PVC -5 - +60°C 850°C A1 - F 30 sec. Pb Free

- ☑ A large number of knockouts to make larger installations.
- ☑ Mounting screws are fitted with a triple thread for quick installation.

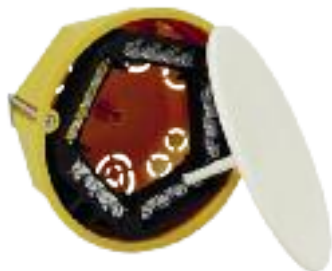


item	conf.	description		EAN
			pcs	
KO 97/L	NA	boxes fitted with screws for installation in double wall and with lids separately placed into cardboard	80	8595057600171

- accessories	- tools for installation
<p>S-96 pg. 1-73 SP-96 pg. 1-74 TYP0... pg. 1-75</p>	<p>VPTU; VPT 97 Ø 103,5 mm pg. 1-76</p>

KR 97/L

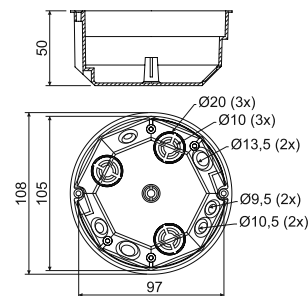
- junction box with cover KO 97 V/1 and terminal plate SP-96



MAT

PVC -5 - +60°C 850°C A1 - F 30 sec. Pb Free

- ☑ A large number of knockouts to make larger installations.
- ☑ Mounting screws are fitted with a triple thread for quick installation.

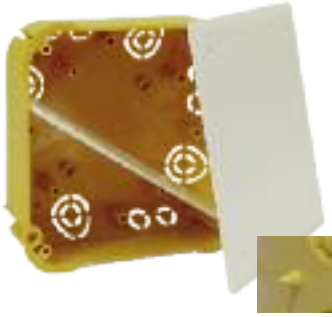


item	conf.	description		EAN
			pcs	
KR 97/L	NA	boxes fitted with terminal plate and screws for installation in double wall, with lids separately placed into cardboard	80	8595057600263

- accessories	- tools for installation
<p>S-96 pg. 1-73 TYP0... pg. 1-75</p>	<p>VPTU; VPT 97 Ø 103,5 mm pg. 1-76</p>

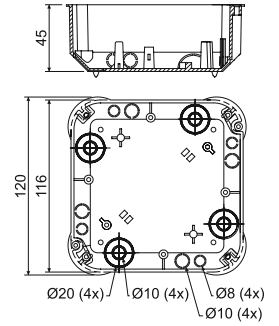
KO 110/L

- junction box with cover V 110 L and partition wall P 110 L



MAT					
PVC	-5 - +60°C	850°C	A1 - F	30 sec.	Pb Free

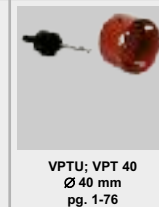
- ✓ The box can be used with an S-96 or SP-96 terminal strip or with two S-66 terminal strips, separated by a partition.
- ✓ Possibility to connect two different circuits of up to 400 V separated by a partition.
- ✓ Mounting screws are fitted with a triple thread for quick installation.
- ✓ Outer side of the bottom contains holes for marking drill holes.



item	conf.	description		EAN
			pcs	
KO 110/L	NA	lid screws inserted together with partition into box, each box with a lid sealed in shrink foil and labelled	1; 28	8595057611672
	ST	the screws for fixing the box to plasterboard are installed in the box, a partition is inserted in the box, the lid is screwed onto the box and the box is provided with the label	36	8595057699434

- accessories

- tools for installation



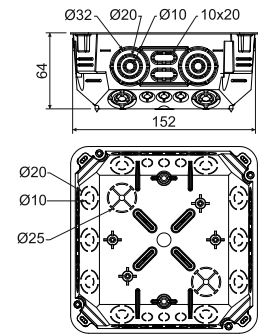
KO 125/1L

- box with cover V 125/1



MAT					
PVC	-5 - +60°C	850°C	A1 - F	30 sec.	Pb Free

- ✓ A large number of knockouts for inserting cables and pipes.
- ✓ Possibility to install the support trunking TS 35.
- ✓ Possibility to set the lid in a horizontal position.
- ✓ Possibility to break the sidewall for easier cable handling.
- ✓ Outer side of the bottom contains holes for marking drill holes.
- ✓ Mounting screws are fitted with a triple thread for quick installation.



item	conf.	description		EAN
			pcs	
KO 125/1L	NA	the screws for fixing the lid and the screws for fixing to plasterboard are installed in the box, individual boxes together with the lid are packed in shrink wrap	1; 27	8595057668652
	ST	the box fitted with screws for fixing to plasterboard, the lid screwed onto the box, each box provided with a label with a barcode	18	8595057699441

- accessories

- tools for installation



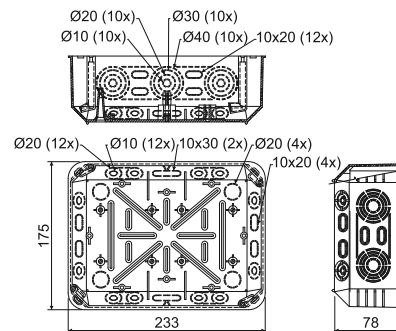
KT 250/L

- box with cover VKT 250/L



MAT
 PVC -5 - +60°C 850°C A1 - F 30 sec.

- ✓ A large number of knockouts for inserting cables and pipes.
- ✓ Possibility to install the support trunking TS 35.
- ✓ Possibility to set the lid in a horizontal position.
- ✓ Possibility to break the sidewall for easier cable handling.
- ✓ Outer side of the bottom contains holes for marking drill holes.
- ✓ Mounting screws are fitted with a triple thread for quick installation..



item	conf.	description		EAN
			pcs	
KT 250/L	NB	the screws for fixing the lid and the screws for fixing to plasterboard are installed in the box, individual boxes together with the lid are packed in shrink wrap	1; 12	8595057618640
	ST	the box fitted with screws for fixing to plasterboard, the lid screwed onto the box, each box provided with a label with a barcode	12	8595057699458

- accessories



- tools for installation



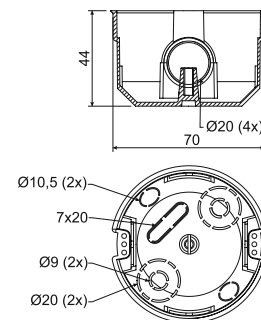
KPM 64/LU

- instrument box with assembly ring MKU 64



MAT
 PVC -5 - +60°C 850°C A1 - F 30 sec.

- ✓ For mounting into plaster with a thickness of 12.5 mm.
- ✓ Assembly ring enables installation even in double double wall of 2x 12.5 mm.
- ✓ Quick installation without screws - only pressed into the assembly ring.
- ✓ During the assembling there is necessary to dimple the edge of plasterboard.

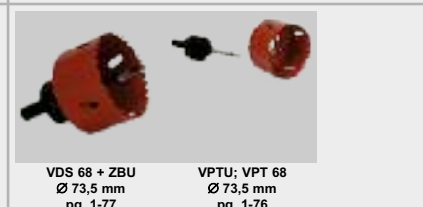


item	conf.	description		EAN
			pcs	
KPM 64/LU	NA	box with rings separately packed in a cardboard	90	8595057612648

- accessories



- tools for installation

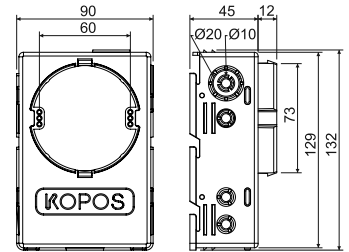


KUH 1/L

- universal box



- ✓ Installation on the reverse side of double wall with a thickness of 12.5 mm using the included screws.
- ✓ More space in the box allows the insertion of active elements under the device.
- ✓ Possibility to insert the terminal S-66 directly under the device.
- ✓ Suitable for modern electrical system with higher space requirements.



item	conf.	description	EAN	
			pcs	
KUH 1/L	NA	inserted into each box are installation and device screws, each box is individually wrapped in shrink foil and labelled	1; 35	8595057687950

- accessories

V 68
pg. 1-66S-66
pg. 1-73TYP0...
pg. 1-75

- tools for installation

VDS 68
Ø 73,5 mm
pg. 1-77VPTU; VPT 68
Ø 73,5 mm
pg. 1-76

Assembling procedures and examples of using the KUH 1/L box

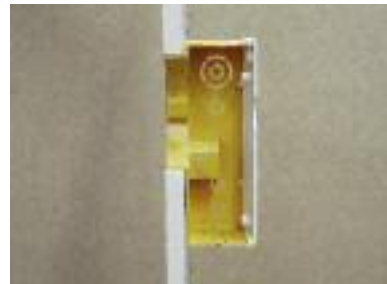
1) Drilling the hole with Ø73.5 mm in the plaster wall by drill VDS 68 (see page 1-77).



2) Inserting the KUH 1/L box into the prepared hole. Covering the box with the bottom plate.



3) Side view (in sectional view) of box inserted from the back side of the plaster board.



4) Self-drilling screw fastening of the box. Detail of separate space for screw.



5) Examples of using the box (in sectional view): e.g. inserting of over-voltage protection, clamping by using of screwless terminals, using of the S-66 terminal plate.



Examples of mounting the boxes into a cavity wall

Installation of a rectangular box

1. Determining the mounting position, pushing the drill centers.



2. Corner holes drilling.



3. Cut line tracing.



4. Cutting out and removal of cut residue.



5. Inserting the box and power-installing.



Fixing box with assembling ring

1. Drilling an opening into a hollow wall using a drill VDS 68.



2. Insertion of assembling ring to a gypsum wall.



3. Insertion a box into an assembling ring.



4. Easy and fast installation – time saving up to 25%.



Box fixation with abutment screw

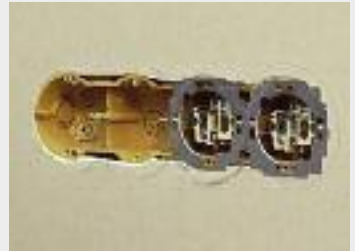


Installation of multiple box in the plaster wall

1. Drilling holes.



2. Installation of devices with axis distance of 71 mm (horizontal frame).

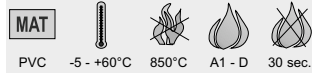


3. Final box covering (KP 64/4L) with installed devices.

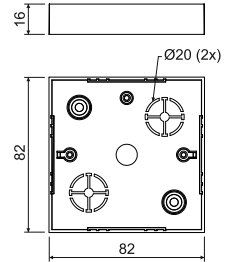


LK 80/1

- instrument box



- ✓ Its shape is also suitable for older devices.
- ✓ To install on materials with fire classes E or F, use insulating pad.



item	conf.	description		EAN
			pcs	
LK 80/1	HB	boxes packed in shrink foil in packages of 10 pieces, device screws included	10; 160	8595057616387



- accessories

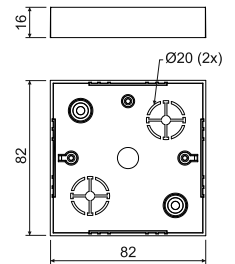
VLK 80
pg. 1-68PI 80R
pg. 1-72S-66
pg. 1-73TYP0...
pg. 1-75

LK 80/2

- junction box with cover VLK 80



- ✓ Its shape is also suitable for older devices.
- ✓ Inserting terminal plate S-66.
- ✓ To install on materials with fire classes E or F, use insulating pad.
- ✓ The lid can be purchased separately.



item	conf.	description		EAN
			pcs	
LK 80/2	HB	boxes packed in shrink foil in packages of 10 pieces, lid screws included, lids individually wrapped in packages of 10 pieces	10; 120	8595057616394



- accessories

PI 80R
pg. 1-72S-66
pg. 1-73TYP0...
pg. 1-75

LK 80/3

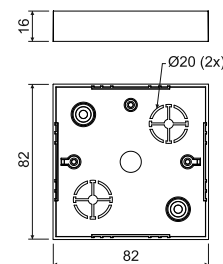
- junction box with cover VLK 80 and terminal plate S-66



MAT

PVC -5 - +60°C 850°C A1 - D 30 sec.

- Inserting terminal plate S-66.
- To install on materials with fire classes E or F, use insulating pad.
- Lids and terminal plates can be purchased separately.



item	conf.	description		EAN
			pcs	
LK 80/3	HB	boxes packed in shrink foil in a package of 10 pieces, included are terminal plate screws, lid screws, lids packed separately in packages of 10 pieces, as are the terminal plates, all labelled	10; 100	8595057616400

- accessories



PI 80R
pg. 1-72

TYP0...
pg. 1-75

LK 80X28/1

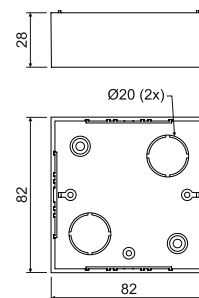
- instrument box



MAT

PVC -5 - +60°C 850°C A1 - D 30 sec.

- To repair older installations.
- To install on materials with fire classes E or F, use insulating pad.
- Intended for installation of sockets and other devices.
- Allows installation of devices with greater mounting depth.



item	conf.	description		EAN
			pcs	
LK 80X28/1	HB	boxes packed in shrink foil in packages of 10 pieces, device screws included	10; 100	8595057617193

- accessories



VLK 80
pg. 1-68

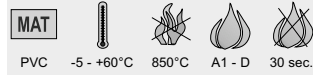
PI 80R
pg. 1-72

S-66
pg. 1-73

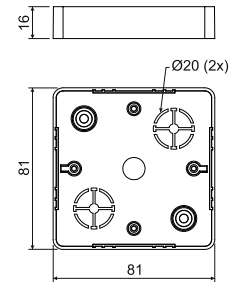
TYP0...
pg. 1-75

LK 80R/1

- instrument box



- ✓ Intended for devices of Classic and Swing - ABB series.
- ✓ To install on materials with fire classes E or F, use insulating pad.



item	conf.	description	package	
			pcs	EAN
LK 80R/1	HB	boxes packed in shrink foil in packages of 10 pieces, device screws included	10; 160	8595057616349

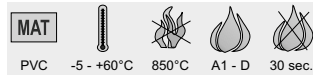


- accessories

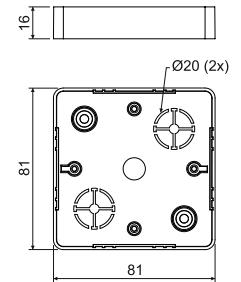
VLK 80/R
pg. 1-69NR 80/R
pg. 1-70PI 80R
pg. 1-72S-66
pg. 1-73TYP0...
pg. 1-75

LK 80R/2

- junction box with cover VLK 80/R



- ✓ To install on materials with fire classes E or F, use insulating pad.
- ✓ The lid can be purchased separately.



item	conf.	description	package	
			pcs	EAN
LK 80R/2	HB	boxes packed in shrink foil in packages of 10 pieces, device screws included	10; 120	8595057616356



- accessories

NR 80/R
pg. 1-70PI 80R
pg. 1-72S-66
pg. 1-73TYP0...
pg. 1-75

material



temperature resistance



self-snuffing



fire reaction class of underlying material



flaming loop test



package

LK 80R/3

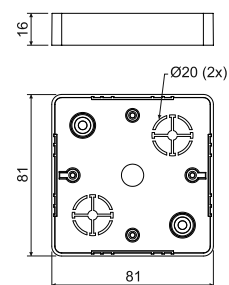
- junction box with cover VLK 80/R and terminal plate S-66



MAT

PVC -5 - +60°C 850°C A1 - D 30 sec.

- To install on materials with fire classes E or F, use insulating pad.
- Cover and terminal plates can be purchased separately.



item	conf.	description		EAN
			pcs	
LK 80R/3	HB	boxes packed in shrink foil in and package of 10 pieces, included are terminal plate screws, lid screws, lids packed separately in packages of 10 pieces, as are the terminal plates, all labelled	10; 100	8595057616363

- accessories



NR 80/R
pg. 1-70

PI 80R
pg. 1-72

TYP0...
pg. 1-75

LK 80X20R/1

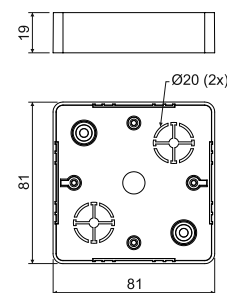
- instrument box



MAT

PVC -5 - +60°C 850°C A1 - D 30 sec.

- Intended for devices of Classic and Swing - ABB series with greater mounting depth.
- To install on materials with fire classes E or F, use insulating pad.



item	conf.	description		EAN
			pcs	
LK 80X20R/1	HB	boxes packed in shrink foil in packages of 10 pieces, device screws included	10; 160	8595057616486

- accessories



VLK 80/R
pg. 1-69

NR 80/R
pg. 1-70

PI 80R
pg. 1-72

S-66
pg. 1-73

TYP0...
pg. 1-75

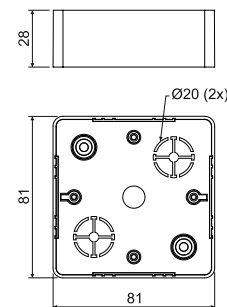
LK 80X28R/1

- instrument box



MAT PVC -5 - +60°C 850°C A1 - D 30 sec.

- ✓ To be intended for equipment of model range Classic or Swing - ABB with high assembling depth – with the exception of small double socket.
- ✓ To install on materials with fire classes E or F, use insulating pad.



item	conf.	description	package	
			pcs	EAN
LK 80X28R/1	HB	boxes packed in shrink foil in packages of 10 pieces, device screws included, color - white RAL 9003	10; 120	8595057616479
	I1	boxes packed in shrink foil in packages of 10 pieces, device screws included, color - pink birch	10; 120	8595568908940
	I2	boxes packed in shrink foil in packages of 10 pieces, device screws included, color - dark oak	10; 120	8595568908988
	SD	boxes packed in shrink foil in packages of 10 pieces, device screws included, color - light wood	10; 120	8595568909022

- accessories

VLK 80/R pg. 1-69 NR 80/R pg. 1-70 PI 80R pg. 1-72 S-66 pg. 1-73 TYP0... pg. 1-75

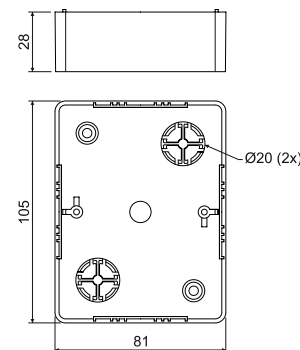
LK 80X28 2ZK

- instrument box



MAT PVC -5 - +60°C 850°C A1 - D 30 sec.

- ✓ Intended for devices of Classic and Swing - ABB series with greater mounting depth.
- ✓ To install on materials with fire classes E or F, use insulating pad.



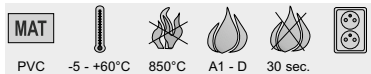
item	conf.	description	package	
			pcs	EAN
LK 80X28 2ZK	HB	boxes packed in shrink foil in packages of 10 pieces, device screws included, color - white RAL 9003	10; 80	8595057616370
	I1	boxes packed in shrink foil in packages of 10 pieces, device screws included, color - pink birch	10; 80	8595568908957
	I2	boxes packed in shrink foil in packages of 10 pieces, device screws included, color - dark oak	10; 80	8595568908995
	SD	boxes packed in shrink foil in packages of 10 pieces, device screws included, color - light wood	10; 80	8595568909039

- accessories

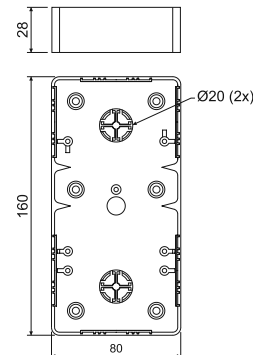
PI 80 2ZK pg. 1-72 TYP0... pg. 1-75

LK 80X28 2R

- instrument box



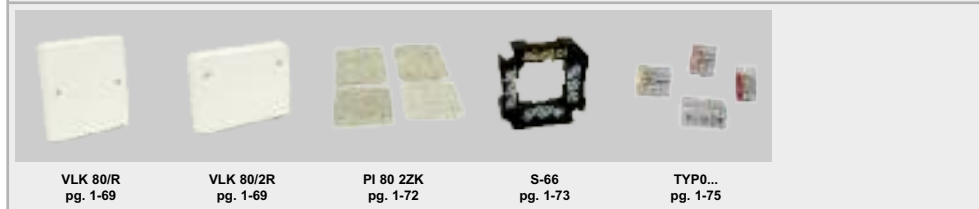
- ☑ Intended for devices of Classic and Swing - ABB series with greater mounting depth.
- ☑ To install on materials with fire classes E or F, use insulating pad (2 pcs PI 80 2ZK).
- ☑ Installation of two devices or and double-socket.



item	conf.	description	EAN	
			pcs	
LK 80X28 2R	HB	boxes packed in shrink foil in packages of 10 pieces, device screws included for 2 devices included	10; 60	8595057615519

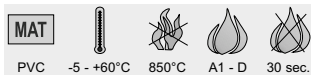


- accessories

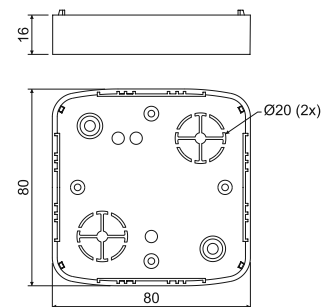


LK 80X16 T

- instrument box special



- ☑ Intended for devices of Tango - ABB series.
- ☑ To install on materials with fire classes E or F, use insulating pad.



item	conf.	description	EAN	
			pcs	
LK 80X16 T	HB	boxes packed in shrink foil in packages of 10 pieces, device screws included	10; 160	8595057619296

- accessories



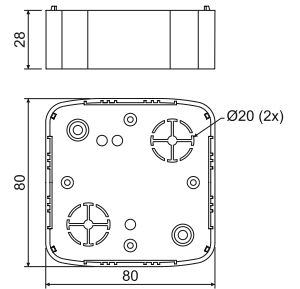
LK 80X28 T

- instrument box



MAT PVC -5 - +60°C 850°C A1 - D 30 sec.

- ✓ Intended for devices of Tango - ABB series with greater mounting depth.
- ✓ To install on materials with fire classes E or F, use insulating pad.



item	conf.	description		EAN
			pcs	
LK 80X28 T	HB	boxes packed in shrink foil in packages of 10 pieces, device screws included, color - white RAL 9003	10; 100	8595057617308
	I1	boxes packed in shrink foil in packages of 10 pieces, device screws included, color - pink birch	10; 100	8595568908964
	I2	boxes packed in shrink foil in packages of 10 pieces, device screws included, color - dark oak	10; 100	8595568909008
	SD	boxes packed in shrink foil in packages of 10 pieces, device screws included, color - light wood	10; 100	8595568909046

- accessories



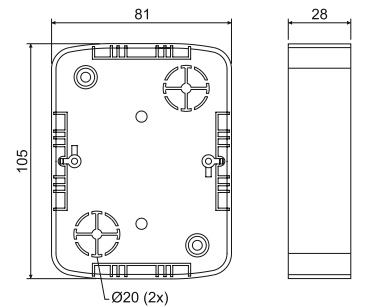
LK 80X28 2ZT

- instrument box



MAT PVC -5 - +60°C 850°C A1 - D 30 sec.

- ✓ Intended for devices of Tango - ABB series with greater mounting depth.
- ✓ To install on materials with fire classes E or F, use insulating pad.



item	conf.	description		EAN
			pcs	
LK 80X28 2ZT	HB	boxes packed in shrink foil in packages of 10 pieces, device screws included, color - white RAL 9003	10; 80	8595057616332
	I1	boxes packed in shrink foil in packages of 10 pieces, device screws included, color - pink birch	10; 80	8595568908971
	I2	boxes packed in shrink foil in packages of 10 pieces, device screws included, color - dark oak	10; 80	8595568909015
	SD	boxes packed in shrink foil in packages of 10 pieces, device screws included, color - light wood	10; 80	8595568909053

- accessories

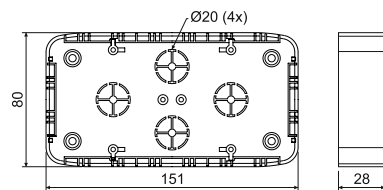


LK 80X28 2T

- instrument box



MAT
 PVC -5 - +60°C 850°C A1 - D 30 sec. 71



- ☑ Intended for two devices of Tango - ABB series in and combined frame.
- ☑ For installation of two units **horizontally**.
- ☑ To install on materials with fire classes E or F, use insulating pad – to support, use 2 pads PI 80 2ZT and adjust to the desired size.

item	conf.	description	EAN	
			pcs	
LK 80X28 2T	HB	boxes packed in shrink foil in packages of 10 pieces, device screws included for 2 devices included	10; 60	8595057617315

- accessories



PI 80 2ZT
pg. 1-72

S-66
pg. 1-73

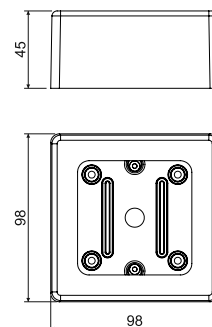
TYP0...
pg. 1-75

LKM 45

- universal box



MAT
 PVC -5 - +60°C 850°C A1 - D 30 sec.



- ☑ Universal box for most single devices available on the market.
- ☑ Trunking inlet holes are indicated on the side, for trunking with dimensions of up to 40 x 20 mm.
- ☑ The box consists of two parts, the top and bottom part.
- ☑ To install on materials with fire classes E or F, use insulating pad.

item	conf.	description	EAN	
			pcs	
LKM 45	HB	boxes packed in shrink foil in packages of 10 pieces, device screws included	10; 120	8595057634855

- accessories



TYP0...
pg. 1-75

Fast and reliable wiring installation



- **KSK** - comprehensive range of wiring boxes with high IP protection class
- **IP 66** - complete protection against dust and water jets
- elastic membrane inlets
- integrated sealing on the edges and in mounting holes

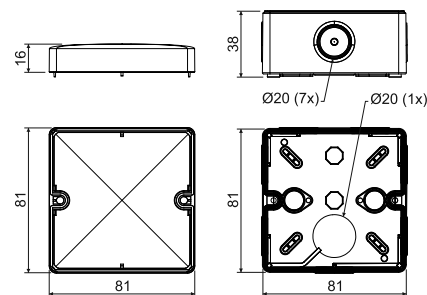
KSK 80

- junction box with IP protection



MAT						
PP	-25 - +60°C	850°C	A1 - F	30 sec.		IP66
cover - PC-ABS						

- ☑ Intended for installation in environments that require IP 66 protection.
- ☑ Integrated knockouts for mounting on base.
- ☑ Intended for direct installation on the surface without having to support with insulating pad.
- ☑ Perfect sealing of cables and pipes.
- ☑ The stainless screws for lid installation and caps for the heads of the mounting screws are included in the package.
- ☑ Option to install special terminal plate (S-KSK 1).
- ☑ Integrated O-ring to install cable glands.
- ☑ 8x knockouts with Ø20 mm.



item	conf.	description		EAN
			pcs	
KSK 80	KA	plugs and lid screws inserted in the box, each box packed in shrink foil and labelled, color - light grey RAL 7035	1; 60	8595568910608

- accessories



S-66
pg. 1-73

S-KSK 1
pg. 1-47

TYP0...
pg. 1-75

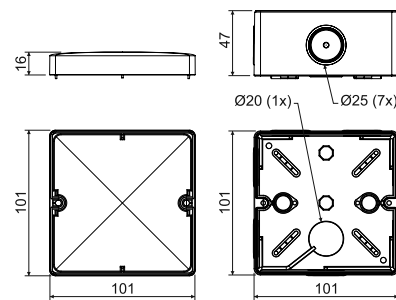
KSK 100

- junction box with IP protection



MAT						
PP	-25 - +60°C	850°C	A1 - F	30 sec.		IP66
cover - PC-ABS						

- ☑ Intended for installation in environments that require IP 66 protection.
- ☑ Integrated knockouts for mounting on base.
- ☑ Intended for direct installation on the surface without having to support with insulating pad.
- ☑ Perfect sealing of cables and pipes.
- ☑ The stainless screws for lid installation and caps for the heads of the mounting screws are included in the package.
- ☑ Option to install special terminal plate (S-KSK 1).
- ☑ Integrated O-ring to install cable glands.
- ☑ Alternatively the box is also available as fire resistant box, see the catalogue Systems maintaining functionality during fire.
- ☑ 7x knockouts with Ø25 mm and 1x Ø20 mm.



item	conf.	description		EAN
			pcs	
KSK 100	KA	plugs and lid screws inserted in the box, each box packed in shrink foil and labelled, color - light grey RAL 7035	1; 30	8595568910615

- accessories



S-66
pg. 1-73

S-KSK 1
pg. 1-47

TYP0...
pg. 1-75

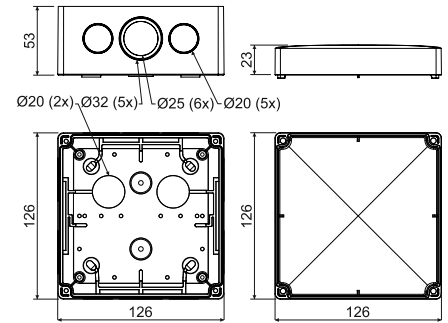
KSK 125

- junction box with IP protection



MAT						
PP	-25 - +60°C	850°C	A1 - F	30 sec.	Pb Free	IP66
cover - PC-ABS						

- ✓ Intended for installation in environments that require IP 66 protection.
- ✓ Integrated knockouts for mounting on base.
- ✓ Intended for direct installation on the surface without having to support with insulating pad.
- ✓ Perfect sealing of cables and pipes.
- ✓ The stainless screws for lid installation and caps for the heads of the mounting screws are included in the package.
- ✓ Option to install special terminal plate (S-KSK 2).
- ✓ Integrated O-ring to install cable glands.
- ✓ Alternatively the box is also available as fire resistant box, see the catalogue Systems maintaining functionality during fire.
- ✓ 7x membrane inputs with $\varnothing 20$ mm, 6x $\varnothing 25$ mm and 5x break-out inputs with $\varnothing 32$ mm.



item	conf.	description		EAN
			pcs	
KSK 125	KA	plugs and lid screws inserted in the box, each box packed in shrink foil and labelled, color - light grey RAL 7035	1; 36	8595568919670

- accessories

S-66
pg. 1-73S-96
pg. 1-73SP-96
pg. 1-73S-KSK 2
pg. 1-47TYP0...
pg. 1-75TS35
pg. 2-67

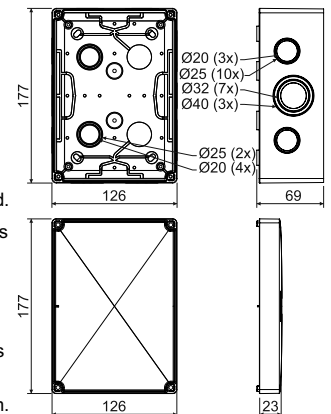
KSK 175

- junction box with IP protection



MAT						
PP	-25 - +60°C	850°C	A1 - F	30 sec.	Pb Free	IP66
cover - PC-ABS						

- ✓ Intended for installation in environments that require IP 66 protection.
- ✓ Integrated knockouts for mounting on base.
- ✓ Intended for direct installation on the surface without having to support with insulating pad.
- ✓ The stainless screws for lid installation and caps for the heads of the mounting screws are included in the package.
- ✓ Option to install special terminal plate (S-KSK 2).
- ✓ Integrated O-ring to install cable glands.
- ✓ Alternatively the box is also available as fire resistant box, see the catalogue Systems maintaining functionality during fire.
- ✓ 7x membrane inputs $\varnothing 20$ mm, 12x $\varnothing 25$ mm, 7x break-out inputs $\varnothing 32$ mm and 3x $\varnothing 40$ mm.



item	conf.	description		EAN
			pcs	
KSK 175	KA	plugs and lid screws inserted in the box, each box packed in shrink foil and labelled, color - light grey RAL 7035	1; 22	8595568919687

- accessories

S-66
pg. 1-73S-96
pg. 1-73SP-96
pg. 1-73S-KSK 2
pg. 1-47TYP0...
pg. 1-75TS35
pg. 2-67

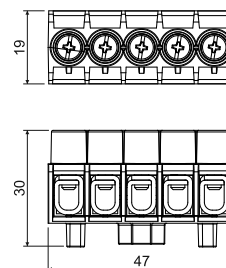
S-KSK 1

- terminal plate

MAT
 PP -40 - +85°C 850°C A1 - F 30 sec.



- ☑ Suitable for boxes KSK 80 and KSK 100.
- ☑ Branching terminal plate are composed of five separate terminals.
- ☑ Each terminal is intended for 4 wires of cross section 1.5 – 2.5 mm² or 3 wires of cross section 4 mm².
- ☑ Enables easy assembly to the box bottom.
- ☑ Designed for maximum voltage of 500 V.
- ☑ Tested according to ČSN EN 60998-1.



item	conf.	description		EAN
			pcs	
S-KSK 1	KB	10 pcs of terminal plates are packed in shrink wrap, provided with a label	460	8595568919656



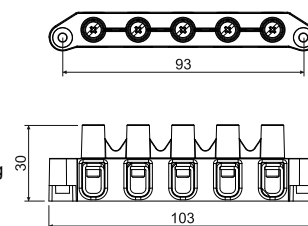
S-KSK 2

- terminal plate

MAT
 PP -40 - +85°C 850°C A1 - F 30 sec.



- ☑ Suitable for boxes KSK 125 and KSK 175.
- ☑ Branching terminal plate are composed of five separate terminals.
- ☑ Each terminal is intended for 4 wires of cross section 2.5 – 4 mm² or 3 wires of cross section 6 mm².
- ☑ Allows mounting to posts inside boxes or to the box bottom – installation is done using screws that are included.
- ☑ Designed for maximum voltage of 500 V.
- ☑ Tested according to ČSN EN 60998-1.

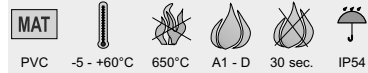


item	conf.	description		EAN
			pcs	
S-KSK 2	KB	10 pcs of terminal plates are packed in shrink wrap, provided with a label	10	8595568919663

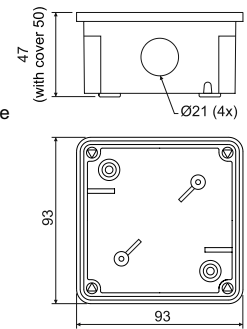


8101

- junction box with sealing 1601



- ☑ For installation in environment with increased humidity, dust, chemical and corrosion resistance in environments with increased risk of mechanical damage.
- ☑ Universal grommets for cables and pipes, grommets can be ordered separately.
- ☑ To install on materials with fire classes E or F, use thermally insulating pad.



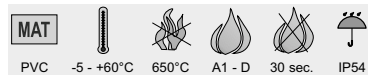
item	conf.	description		EAN
			pcs	
8101	LA	cable grommets and lid screws placed in the box, each box packed in shrink foil and labelled, color - dark grey RAL 7012	1; 55	8595057608801
	KA	cable grommets and lid screws placed in the box, each box packed in shrink foil and labelled, color - light grey RAL 7035	1; 55	8595057655959

- accessories

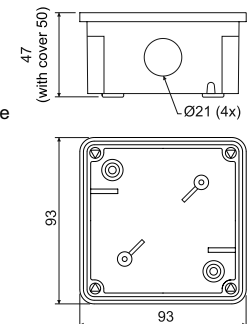
S-66
pg. 1-73TYP0...
pg. 1-751601
pg. 1-57

8102

- junction box with sealing 1601 and terminal plate S-66



- ☑ For installation in environment with increased humidity, dust, chemical and corrosion resistance in environments with increased risk of mechanical damage.
- ☑ Universal grommets for cables and pipes, grommets and terminal plates can be ordered separately.
- ☑ To install on materials with fire classes E or F, use thermally insulating pad.



item	conf.	description		EAN
			pcs	
8102	LA	cable grommets, terminal plates and lid screws placed in the box, each box packed in shrink foil and labelled, color - dark grey RAL 7012	1; 55	8595057608818
	KA	cable grommets, terminal plates and lid screws placed in the box, each box packed in shrink foil and labelled, color - light grey RAL 7035	1; 55	8595057655966

- accessories

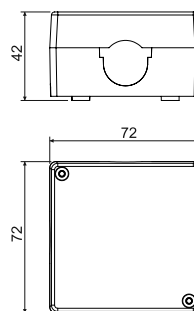
1601
pg. 1-57

8106 - junction box with sealing G-49



MAT					
PVC	-5 - +60°C	650°C	A1 - D	30 sec.	IP40

- ☑ For installation in environment with increased humidity, dust, chemical and corrosion resistance, in environments with increased risk of mechanical damage.
- ☑ Universal grommets for cables, grommets can be ordered separately.
- ☑ To install on materials with fire classes E or F, use thermally insulating pad.



item	conf.	description		EAN
			pcs	
8106	LA	cable grommets and lid screws placed in the box, each box packed in shrink foil and labelled, color - dark grey RAL 7012	1; 100	8595057603332
	KA	cable grommets and lid screws placed in the box, each box packed in shrink foil and labelled, color - light grey RAL 7035	1; 100	8595057655973

- accessories



S-66
pg. 1-73

TYP0...
pg. 1-75

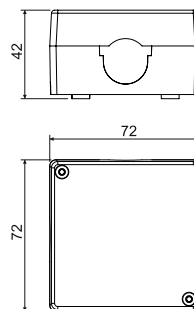
G-49

8107 - junction box with sealing G-49 and terminal plate S-66



MAT					
PVC	-5 - +60°C	650°C	A1 - D	30 sec.	IP40

- ☑ For installation in environment with increased humidity, dust, chemical and corrosion resistance, in environments with increased risk of mechanical damage.
- ☑ Universal grommets for cables, grommets and terminal plates can be ordered separately.
- ☑ To install on materials with fire classes E or F, use thermally insulating pad.



item	conf.	description		EAN
			pcs	
8107	LA	cable grommets, terminal plates and lid screws placed in the box, each box packed in shrink foil and labelled, color - dark grey RAL 7012	1; 100	8595057603387
	KA	cable grommets, terminal plates and lid screws placed in the box, each box packed in shrink foil and labelled, color - light grey RAL 7035	1; 100	8595057655980

- accessories

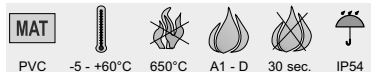


TYP0...
pg. 1-75

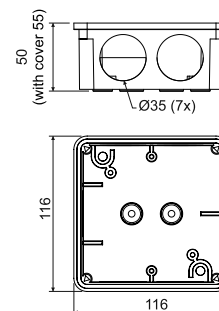
G-49

8110

- junction box with sealing 1611

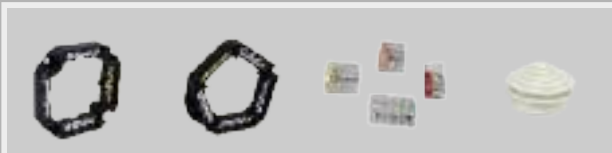


- ✓ For installation in environment with increased humidity, dust, chemical and corrosion resistance in environments with increased risk of mechanical damage.
- ✓ Universal grommets for cables and pipes, grommets can be ordered separately.
- ✓ To install on materials with fire classes E or F, use thermally insulating pad.



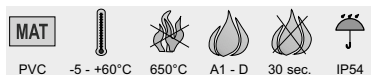
item	conf.	description	package	
			pcs	EAN
8110	LA	cable grommets and lid screws placed in the box, each box packed in shrink foil and labelled, color - dark grey RAL 7012	1; 28	8595057603349
	KA	cable grommets and lid screws placed in the box, each box packed in shrink foil and labelled, color - light grey RAL 7035	1; 28	8595057655997

- accessories

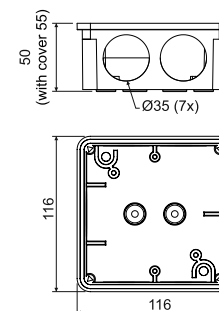
S-96
pg. 1-73SP-96
pg. 1-73TYP0...
pg. 1-751611
pg. 1-57

8111

- junction box with sealing 1611 and terminal plate S-96



- ✓ For installation in environment with increased humidity, dust, chemical and corrosion resistance in environments with increased risk of mechanical damage.
- ✓ Universal grommets for cables and pipes, grommets and terminal plates can be ordered separately.
- ✓ To install on materials with fire classes E or F, use thermally insulating pad.



item	conf.	description	package	
			pcs	EAN
8111	LA	cable grommets, terminal plates and lid screws placed in the box, each box packed in shrink foil and labelled, color - dark grey RAL 7012	1; 20	8595057603394
	KA	cable grommets, terminal plates and lid screws placed in the box, each box packed in shrink foil and labelled, color - light grey RAL 7035	1; 20	8595057656000

- accessories

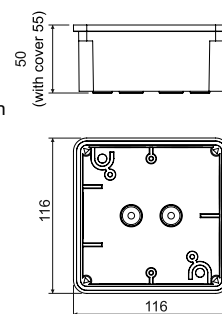
SP-96
pg. 1-73TYP0...
pg. 1-751611
pg. 1-57

8112 - box



MAT PVC -5 - +60°C 650°C A1 - D 30 sec. IP54

- ☑ For installation in environment with increased humidity, dust, chemical and corrosion resistance in environments with increased risk of mechanical damage.
- ☑ Closed box without inlets.
- ☑ To install on materials with fire classes E or F, use thermally insulating pad.



item	conf.	description	EAN	
			pcs	
8112	LA	lid screws placed in the box, each box packed in shrink foil and labelled, color - dark grey RAL 7012	1; 28	8595057603356
	KA	lid screws placed in the box, each box packed in shrink foil and labelled, color - light grey RAL 7035	1; 28	8595057656017

- accessories

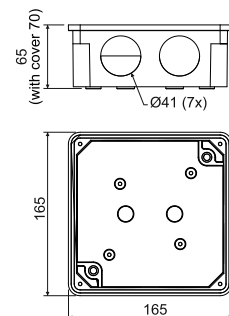


8117 - junction box with sealing 1618



MAT PVC -5 - +60°C 650°C A1 - D 30 sec. IP54

- ☑ For installation in environment with increased humidity, dust, chemical and corrosion resistance in environments with increased risk of mechanical damage.
- ☑ Universal grommets for cables and pipes, grommets can be ordered separately.
- ☑ To install on materials with fire classes E or F, use thermally insulating pad.



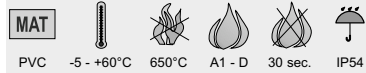
item	conf.	description	EAN	
			pcs	
8117	LA	cable grommets and lid screws placed in the box, each box packed in shrink foil and labelled, color - dark grey RAL 7012	1; 24	8595057603363
	KA	cable grommets and lid screws placed in the box, each box packed in shrink foil and labelled, color - light grey RAL 7035	1; 24	8595057656024

- accessories

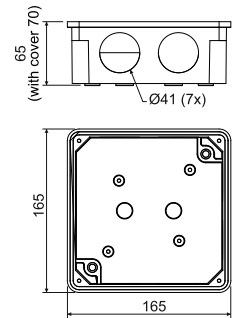


8118

- junction box with sealing 1618 and terminal plate S-96



- ☑ For installation in environment with increased humidity, dust, chemical and corrosion resistance in environments with increased risk of mechanical damage.
- ☑ Universal grommets for cables and pipes, grommets and terminal plates can be ordered separately.
- ☑ To install on materials with fire classes E or F, use thermally insulating pad.
- ☑ Terminal plate can be bought separately.



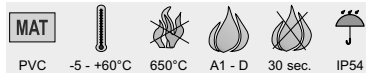
item	conf.	description		EAN
			pcs	
8118	LA	cable grommets, terminal plates and lid screws placed in the box, each box packed in shrink foil and labelled, color - dark grey RAL 7012	1; 24	8595057603400
	KA	cable grommets, terminal plates and lid screws placed in the box, each box packed in shrink foil and labelled, color - light grey RAL 7035	1; 24	8595057656031

- accessories

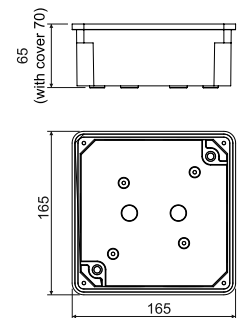
SP-96
pg. 1-73TYP0...
pg. 1-751618
pg. 1-57

8119

- box



- ☑ For installation in environment with increased humidity, dust, chemical and corrosion resistance in environments with increased risk of mechanical damage.
- ☑ Closed box without inlets.
- ☑ To install on materials with fire classes E or F, use thermally insulating pad.



item	conf.	description		EAN
			pcs	
8119	LA	lid screws placed in the box, each box packed in shrink foil and labelled, color - dark grey RAL 7012	1; 24	8595057603370
	KA	lid screws placed in the box, each box packed in shrink foil and labelled, color - light grey RAL 7035	1; 24	8595057656048

- accessories

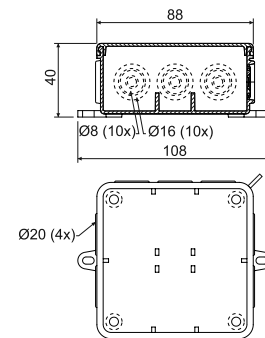
S-96
pg. 1-73SP-96
pg. 1-73TYP0...
pg. 1-75

8130 - box



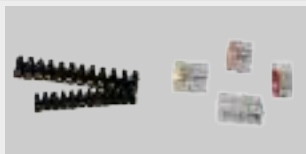
MAT	MAT						
PP cover	PE body	-5 - +60°C	650°C	A1 - D	30 sec.	IP54	IK06

- ☑ For installation in environments with increased humidity and dust.
- ☑ Inlets for cables or pipes of 16 and 20 mm in accordance with EN 60423.
- ☑ Possibility to install on materials of fire classes A1 to D.



item	conf.	description		EAN
			pcs	
8130	HA	boxes packed loosely in cardboard, color - white RAL 9003	60	8595057697300
	KA	boxes packed loosely in cardboard, color - light grey RAL 7035	60	8595057619050

- accessories



TYP...
pg. 1-74

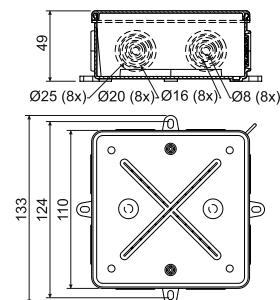
TYP0...
pg. 1-75

8135 - box



MAT	MAT						
PP cover	PE body	-5 - +60°C	650°C	A1 - D	30 sec.	IP54	IK06

- ☑ For installation in environments with increased humidity and dust.
- ☑ Inlets for cables or pipes of 16, 20 and 25 mm in accordance with EN 60423.
- ☑ Possibility to install on materials of fire classes A1 to D.
- ☑ Alternatively the box is also available as fire resistant box, see the catalogue Systems maintaining functionality during fire.



item	conf.	description		EAN
			pcs	
8135	HA	boxes packed loosely in cardboard, color - white RAL 9003	30	8595057697317
	KA	boxes packed loosely in cardboard, color - light grey RAL 7035	30	8595057616493

- accessories



S-96
pg. 1-73

SP-96
pg. 1-73

TYP...
pg. 1-74

TYP0...
pg. 1-75

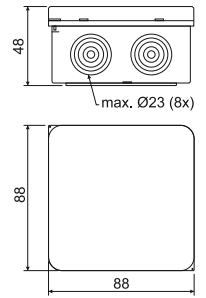
003.CS.K

- box with IP protection



MAT	MAT				
PP cover	PE body	-5 - +60°C	750°C	A1	IP65

- ☑ Equipped with an eye for sealing.
- ☑ To install on materials with fire classes A2-D, use thermally insulating pad.
- ☑ 8x knockouts with max. \varnothing 23



item	conf.	description		EAN
			pcs	
003.CS.K	KB	boxes packed loosely in cardboard, color - light grey RAL 7035	1; 90	8595057624658



- accessories

TYP0...
pg. 1-75

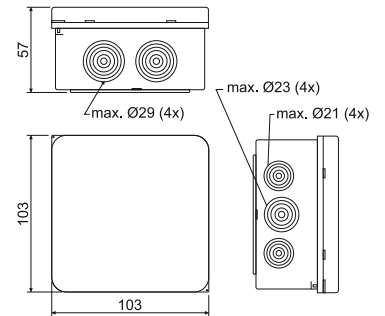
005.CS.K

- box with IP protection



MAT	MAT				
PP cover	PE body	-5 - +60°C	750°C	A1	IP65

- ☑ Equipped with an eye for sealing.
- ☑ To install on materials with fire classes A2-D, use thermally insulating pad.
- ☑ 12 inlets - 4x knockouts with \varnothing 21 mm; 4x knockouts with \varnothing 23 mm; 4x knockouts with \varnothing 29 mm..



item	conf.	description		EAN
			pcs	
005.CS.K	KB	boxes packed loosely in cardboard, color - light grey RAL 7035	1; 56	8595057624665



- accessories

TYP0...
pg. 1-75

7116 B - box with cover and protective terminal
7116 C - box with cover



- ☑ Boxes for piping with steel threaded or metal flexible pipes.
- ☑ **Three glands and one plug** evenly distributed on the sides of the box. Terminal plate is not included in the box.
- ☑ 7116 B: fitted with a clamp for installation in TNS networks.
- ☑ 7116 C: without protective terminal for installation in TNC networks.

item	conf.	description			EAN
			mm	pcs	
7116 B	P16	glands for threaded pipes P16	96 x 96 x 64	1; 12	8595057604124
	M20	glands for threaded pipes M20		1; 12	8595057689527
7116 C	P16	glands for threaded pipes P16		1; 12	8595057604131
	M20	glands for threaded pipes M20		1; 12	8595057689534

- accessories



6303-11
pg. 1-74

TYP0...
pg. 1-75

P-16
pg. 1-58

7216 B - box with cover and protective terminal
7216 C - box with cover



- ☑ Boxes for piping with steel threaded or metal flexible pipes.
- ☑ **Four glands and one plug** evenly distributed on the sides of the box. Terminal plate is not included in the box.
- ☑ 7216 B: fitted with a clamp for installation in TNS networks.
- ☑ 7216 C: without protective terminal for installation in TNC networks.

item	conf.	description			EAN
			mm	pcs	
7216 B	P16	glands for threaded pipes P16	96 x 96 x 64	1; 12	8595057604186
	M20	glands for threaded pipes M20		1; 12	8595057689541
7216 C	P16	glands for threaded pipes P16		1; 12	8595057604193
	M20	glands for threaded pipes M20		1; 12	8595057689558

- accessories



6303-11
pg. 1-74

TYP0...
pg. 1-75

P-16
pg. 1-58

7121 B
7121 C

- box with cover and protective terminal
- box with cover



- ☑ Boxes for piping with steel threaded or metal flexible pipes.
- ☑ **Three glands and one plug** evenly distributed on the sides of the box. Terminal plate is not included in the box.
- ☑ 7121 B: fitted with a clamp for installation in TNS networks.
- ☑ 7121 C: without protective terminal for installation in TNC networks.

item	conf.	description			EAN
			mm	pcs	
7121 B	P21	glands for threaded pipes P21	120 x 120 x 76	1; 12	8595057604155
	M25	glands for threaded pipes M25		1; 12	8595057689565
7121 C	P21	glands for threaded pipes P21		1; 12	8595057604162
	M25	glands for threaded pipes M25		1; 12	8595057689572

- accessories



6303-12
pg. 1-74

TYP0...
pg. 1-75

P-21
pg. 1-58

7221 B
7221 C

- box with cover and protective terminal
- box with cover



- ☑ Boxes for piping with steel threaded or metal flexible pipes.
- ☑ **Four glands and three plugs** evenly distributed on the sides of the box. Terminal plate is not included in the box.
- ☑ 7221 B: fitted with a clamp for installation in TNS networks.
- ☑ 7221 C: without protective terminal for installation in TNC networks.

item	conf.	description			EAN
			mm	pcs	
7221 B	P21	glands for threaded pipes P21	120 x 120 x 76	1; 12	8595057604216
	M25	glands for threaded pipes M25		1; 12	8595057689589
7221 C	P21	glands for threaded pipes P21		1; 12	8595057604223
	M25	glands for threaded pipes M25		1; 12	8595057689596

- accessories



6303-12
pg. 1-74

TYP0...
pg. 1-75

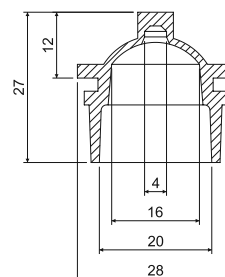
P-21
pg. 1-58

1601

- sealing grommet



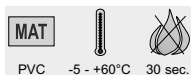
- ☑ For 8101 and 8102 type boxes.
- ☑ Suitable for pipe with and diameter of 20 mm.
- ☑ When removing the projections, it is designed for cables of max. 16 mm in diameter.



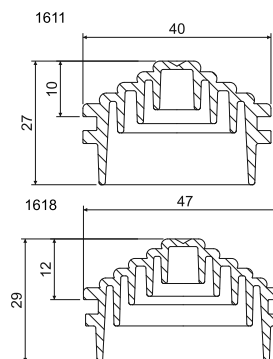
item	conf.	description	EAN	
			pcs	
1601	LB	color - dark grey	10; 900	8595057627222
	KB	color - light grey	10; 900	8595057656703

1611; 1618

- sealing grommet



- ☑ Holes for cable and pipe inlet are marked gradually.
- ☑ Grommet 1611: for 8110 and 8111 type boxes, for pipes with 16, 25, 32 in dimension.
- ☑ Grommet 1618: for 8117 and 8118 type boxes, for pipes with 16, 25, 32, 40 in dimension.



item	conf.	description	A	B	EAN	
			mm	mm	pcs	
1611	KB	color - light grey	40	27	7; 672	8595057656710
	LB	color - grey			7; 672	8595057629325
1618	KB	color - light grey	48	29	7; 504	8595057656727
	LB	color - grey			7; 504	8595057629332

P-16; P-21

- sealing cork








- P-16: to seal unused inlets of metal boxes 7116 and 7216.
- P-21: to seal unused inlets of metal boxes 7121 and 7221.

item	description		EAN
		pcs	
P-16	plug with armoured P16 thread and seal	10; 500	8595057632660
P-21	plug with armoured P21 thread and seal	10; 400	8595057632677

KU 68-1901HF

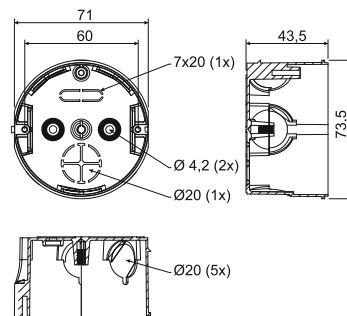
- universal box

MAT       


PPO -45 - +105°C 850°C A1 - D 30 sec. 71




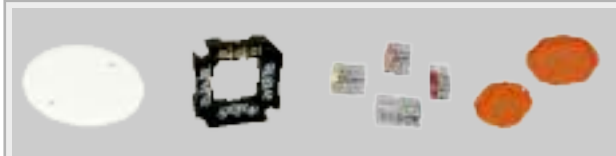
- ☑ Possibility to join into and continuous series with and spacing of 71 mm.
- ☑ Connection of up to three boxes in and row is recommended.
- ☑ For premises with increased need for protection of persons and property.



item	conf.	description	EAN	
			pcs	
KU 68-1901HF	FA	packed in shrink foil, packaging labelled, screws included	10; 100	8595057633957

 - accessories

 - tools for installation

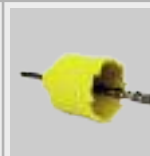


V 68HF
pg. 1-62

S-66
pg. 1-73

TYP0...
pg. 1-75

ZV 68
pg. 1-68



FR 68 SDS
Ø 80 mm
pg. 1-77

KP 68/2HF

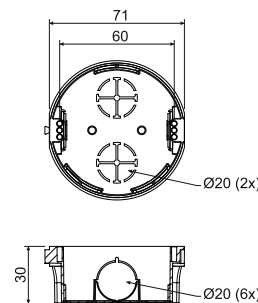
- instrument box

MAT       


PPO -45 - +105°C 850°C A1 - D 30 sec.




- ☑ For premises with increased need for protection of persons and property.



item	conf.	description	EAN	
			pcs	
KP 68/2HF	FA	packed in shrink foil, packaging labelled, screws included	10; 150	8595057634923

 - accessories

 - tools for installation



V 68HF
pg. 1-62

TYP0...
pg. 1-75

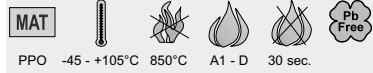
ZV 68
pg. 1-68



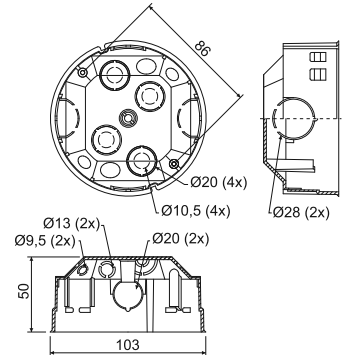
FR 68 SDS
Ø 80 mm
pg. 1-77

KOM 97HF

- box with cover KO 97 V/1 HF



- ☑ For premises with increased need for protection of persons and property.
- ☑ Lid KO 97 V/1HF can be ordered separately.



item	conf.	description	package	
			pcs	EAN
KOM 97HF	FA	boxes and lids packed loosely in cardboard	40	8595057635012

- accessories

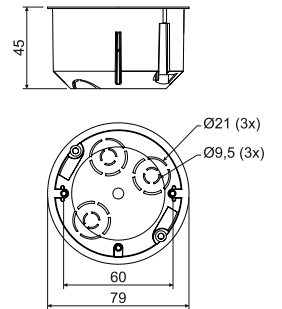
S-96
pg. 1-73SP-96
pg. 1-73TYP0...
pg. 1-75ZV 97
pg. 1-68

KU 68 LA/1HF

- universal box in hollow walls

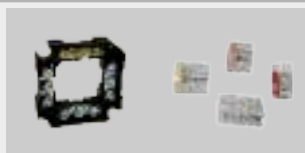


- ☑ For premises with increased need for protection of persons and property.
- ☑ While stocks last.



item	conf.	description	package	
			pcs	EAN
KU 68 LA/1HF	FA	boxes fitted with screws and bases for easy mounting to drywall, device screws included, packed loosely in cardboard	90	8595057633964

- accessories

S-66
pg. 1-73TYP0...
pg. 1-75

- tools for installation

VDS 68
Ø 73,5 mm
pg. 1-77VPTU: VPT 68
Ø 73,5 mm
pg. 1-76

KU 68 LD/1HF

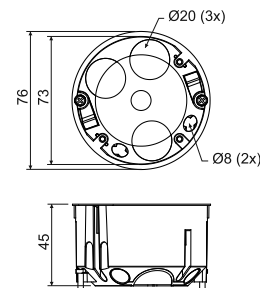
- universal box in hollow walls



MAT

PP -5 - +60°C 850°C A1 - F 30 sec.

- ☑ For premises with increased need for protection of persons and property.
- ☑ Inlet openings made of flexible material.
- ☑ Cable installation is performed by perforating the membrane with a sharp tool (e.g. screwdriver) and then inserting the cable, or by extracting the pre-pressed membrane inlet.
- ☑ Air proofed even with inserted cable or pipe.
- ☑ Mounting screws are fitted with a triple thread for quick installation.
- ☑ Prevents airflow through the installation.
- ☑ When mounting, it is not necessary to countersink the plasterboard edge.



item	conf.	description		EAN
			pcs	
KU 68 LD/1HF	HA	boxes fitted with screws for mounting into drywall, device screws are fitted in boxes	90	8595568910585

- accessories



V 68HF
pg. 1-62

S-66
pg. 1-73

TYP0...
pg. 1-75

- tools for installation



VDS 68
Ø 73,5 mm
pg. 1-77

VPTU; VPT 68
Ø 73,5 mm
pg. 1-76

KP 64/LD HF

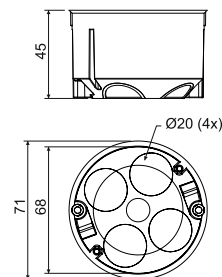
- universal box in hollow walls



MAT

PP -5 - +60°C 850°C A1 - F 30 sec.

- ☑ For premises with increased need for protection of persons and property.
- ☑ Inlet openings made of flexible material.
- ☑ Cable installation is performed by perforating the membrane with a sharp tool (e.g. screwdriver) and then inserting the cable, or by extracting the pre-pressed membrane inlet.
- ☑ Air proofed even with inserted cable or pipe.
- ☑ Mounting screws are fitted with a triple thread for quick installation.
- ☑ Prevents airflow through the installation.
- ☑ When mounting, it is not necessary to countersink the plasterboard edge.



item	conf.	description		EAN
			pcs	
KP 64/LD HF	HA	boxes fitted with screws for mounting into drywall, device screws are fitted in boxes	100	8595568910578

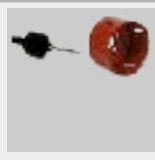
- accessories



V 68HF
pg. 1-62

TYP0...
pg. 1-75




- tools for installation



VPTU; VPT 64
Ø 68 mm
pg. 1-77

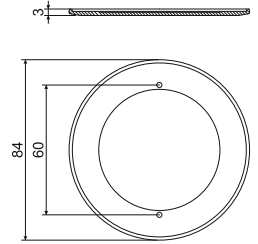
V 68HF


- cover

MAT				
PC	-45 - +105°C	850°C	A1 - F	30 sec.



- For premises with increased need for protection of persons and property.
- To cover the boxes with fixing spacing of 60 mm using fastening screws.



item	conf.	description		EAN
			pcs	
V 68HF	HB	lids in packs of 10 pcs, sealed in shrink foil, color - white RAL 9003	10; 100	8595057634114

LK 80X28R/1HF

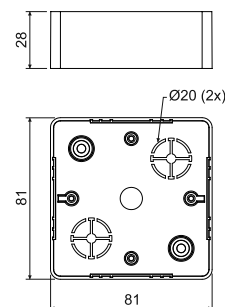
- instrument box



MAT

PC -45 - +105°C 850°C A1 - D 30 sec.

- ☑ For premises with increased need for protection of persons and property.
- ☑ To be intended for equipment of model range Classic or Swing - ABB with high assembling depth – with the exception of small double socket.
- ☑ To install on materials with fire classes E or F, use insulating pad.



item	conf.	description		EAN
			pcs	
LK 80X28R/1HF	HB	boxes packed in shrink foil in packages of 10 pieces, device screws included	10; 120	8595057634121

- accessories



PI 80R
pg. 1-72

TYP0...
pg. 1-75

LK 80X28 2ZKHF

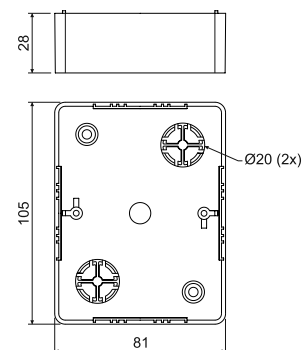
- instrument box



MAT

PC -45 - +105°C 850°C A1 - D 30 sec.

- ☑ For premises with increased need for protection of persons and property.
- ☑ Intended for double-socket of Classic or Swing series - ABB with high assembling depth.
- ☑ To install on materials with fire classes E or F, use insulating pad.



item	conf.	description		EAN
			pcs	
LK 80X28 2ZKHF	HB	boxes packed in shrink foil in packages of 10 pieces, device screws included	10; 100	8595057634138

- accessories



PI80 2ZK
pg. 1-72

TYP0...
pg. 1-75

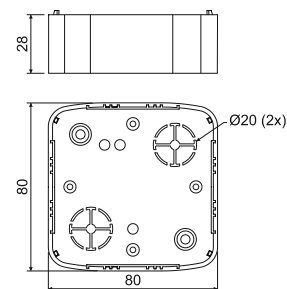
LK 80X28 THF

- instrument box



MAT					
PC	-45 - +105°C	850°C	A1 - D	30 sec.	

- ✓ For premises with increased need for protection of persons and property.
- ✓ Intended for devices of Tango series.
- ✓ To install on materials with fire classes E or F, use insulating pad.



item	conf.	description		EAN
			pcs	
LK 80X28 THF	HB	boxes packed in shrink foil in packages of 10 pieces, device screws included	10; 100	8595057633995



- accessories

PI 80T
pg. 1-72TYP0...
pg. 1-75

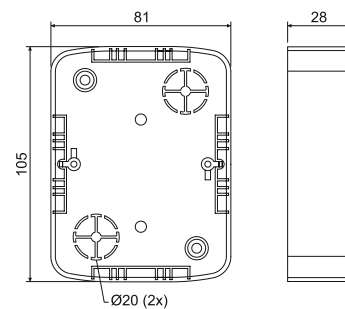
LK 80X28 2ZTHF

- instrument box



MAT					
PC	-45 - +105°C	850°C	A1 - D	30 sec.	

- ✓ For premises with increased need for protection of persons and property.
- ✓ Intended for double-sockets of Tango series - ABB with high assembling depth.
- ✓ To install on materials with fire classes E or F, use insulating pad.



item	conf.	description		EAN
			pcs	
LK 80X28 2ZTHF	HB	boxes packed in shrink foil in packages of 10 pieces, device screws included	10; 80	8595057634145



- accessories

PI 802ZT
pg. 1-72TYP0...
pg. 1-75

KO 68

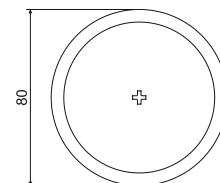
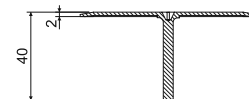
- cover



MAT

PVC -5 - +60°C 850°C A1 - F 30 sec.

☑ For the final covering of boxes KU 68-1901, KU 68-1902, KU 68-1903 and KPM 64/LU.



item	conf.	description		EAN
			pcs	
KO 68	HB	the lids are packed in the bag, the bag is put in the carton	100	8595057600539

KO 97 V

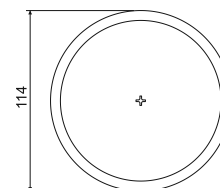
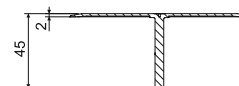
- cover



MAT

PVC -5 - +60°C 850°C A1 - F 30 sec.

☑ For the final covering of distribution and joint boxes KO 97/5, KR 97/5 and KOM 97.



item	conf.	description		EAN
			pcs	
KO 97 V	HB	the lids are packed in the bag, the bag is put in the carton	40	8595057600546

KO 97 V/1

- cover

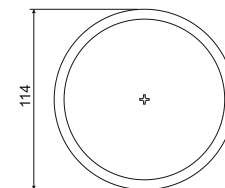
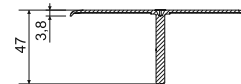


MAT

PVC -5 - +60°C 850°C A1 - F 30 sec.

☑ For the final covering of distribution and joint boxes KO 97/5, KO 97/L, KR 97/5, KR 97/L, KOM 97 and KOM 97/L.

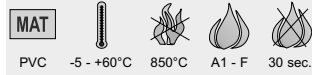
☑ The lid is provided with edge that allows trouble-free covering of wiring boxes installed in concrete or hollow walls.



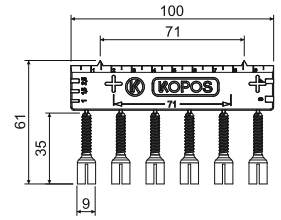
item	conf.	description		EAN
			pcs	
KO 97 V/1	HB	the lids are packed in the bag, the bag is put in the carton	40	8595057612983

TN...

- extending piece



- ✓ To extend the central pin of cover lids, for boxes that are too recessed, where the cover lid pin is short and does not reach the central thread of the wiring box.
- ✓ The pin can be shortened to the required length.
- ✓ Attached ruler is used to measure the spacing of 71 mm when mounting devices in the combined frame.
- ✓ Notches can be used as a gauge to identify cable sections.
- ✓ 1 piece contains a plate of 6 adjusting pins.



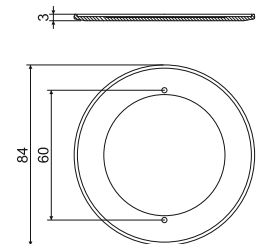
item	conf.	description	package	
			pcs	EAN
TN 68	KB	for boxes KU 68-1901, 1902, 1903 a KPM 64/LU, color - grey	10; 800	8595057698512
TN 97	HB	for boxes KO 97/5, KR 97/5, KOM 97, KO 97/L, KR 97/L, KOM 97/LU, color - white	10; 800	8595057698529

V 68

- cover



- ✓ To cover the boxes with fixing spacing of 60 mm using fastening screws.
- ✓ For boxes KP 67, KP 68, KPR 68, KUH 1, KPM 64 and KI 68.



item	conf.	description	package	
			pcs	EAN
V 68	HA	to finally cover the boxes with fixing spacing of 60 mm using fastening screws	100; 400	8595057600577

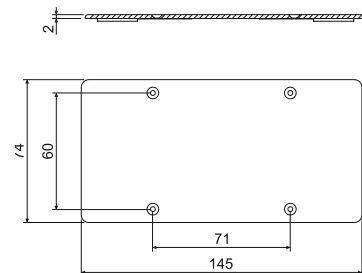
VKP 64/2L

- cover



MAT
 PVC -5 - +60°C 850°C A1 - F 30 sec.

☑ For the final covering of two connected KP 67/2 or KP 67/3 boxes of spacing 71 mm, or double KP 64/2 and KP 64/2L boxes.



item	conf.	description	EAN	
			pcs	
VKP 64/2L	HB	for boxes KP 64/2, KP 64/2L	10; 450	8595057655164

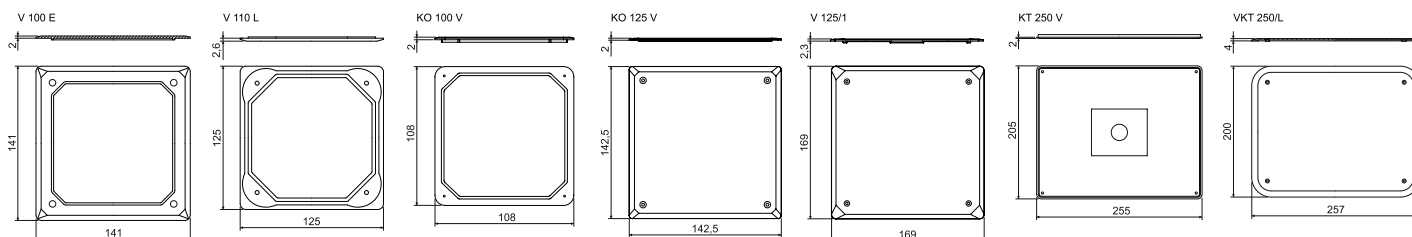
Covers



MAT
 PVC -5 - +60°C 850°C A1 - F 30 sec.

☑ Color - white.
 ☑ Mounting screws must be purchased separately.

item	conf.	description	EAN	
			pcs	
V 100 E	HB	for boxes KO 100 E	10; 100	8595057617353
V 110 L	HB	for boxes KO 110/L	10; 120	8595057612129
KO 100 V	HB	for boxes KO 100	10; 140	8595057600515
KO 125 V	HB	for boxes KO 125	10; 130	8595057600522
V 125/1	HB	for boxes KO 125 E and KO 125/1L	10; 180	8595057668669
KT 250 V	HB	for boxes KT 250	5; 35	8595057600553
VKT 250/L	HB	for boxes KT 250/1 and KT 250/L	5; 45	8595057669147

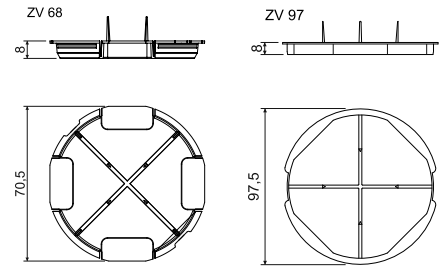


ZV 68; ZV 97

- blind cover



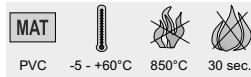
- ✓ To cover boxes before rough casting; after plaster solidifies, lid is removed.
- ✓ Color - orange.



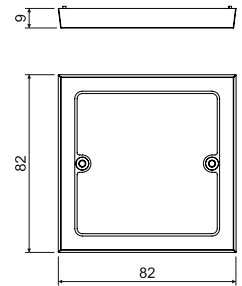
item	conf.	description	package	
			pcs	EAN
ZV 68	AB	for boxes of series KU, KP 68, KBV-1	10; 400	8595057600591
ZV 97	AB	for boxes of series KO, KR 97	10; 220	8595057600607

VLK 80

- cover



- ✓ To finally cover trunking boxes LK 80/1, 2, 3 and LK 80X28/1.
- ✓ Screws are not included.



item	conf.	description	package	
			pcs	EAN
VLK 80	HB	packed in shrink foil	10; 340	8595057616417

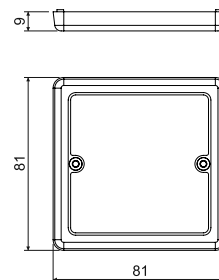
VLK 80/R

- cover



MAT			
PVC	-5 - +60°C	850°C	30 sec.

☑ To finally cover trunking boxes LK 80R/1, LK80R/2, LK 80R/3 and LK 80X20R/1, LK 80X28R/1, LK 80X28 2R.



item	conf.	description		EAN
			pcs	
VLK 80/R	HB	packed in shrink foil	10; 380	8595057616325

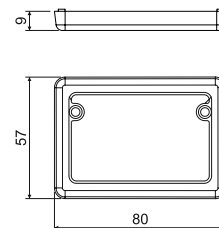
VLK 80/2R

- cover



MAT			
PVC	-5 - +60°C	850°C	30 sec.

☑ To finally cover trunking boxes LK 80X28 2R when mounting double-socket.



item	conf.	description		EAN
			pcs	
VLK 80/2R	HB	packed in shrink foil	10; 560	8595057614451

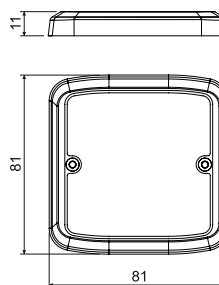
VLK 80/T

- cover



MAT			
PVC	-5 - +60°C	850°C	30 sec.

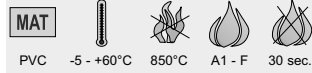
☑ To finally cover trunking boxes LK 80X16 T and LK 80X28 T.



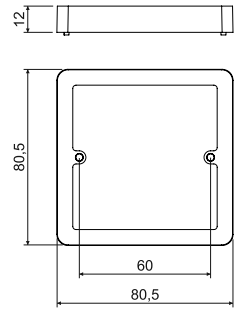
item	conf.	description		EAN
			pcs	
VLK 80/T	HB	packed in shrink foil	10; 420	8595057610880

NR 80/R

- extending frame



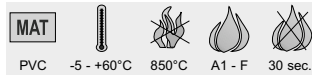
☑ Intended for greater assembly depth of trunking boxes compatible with instruments of the Classic or Swing model lines.



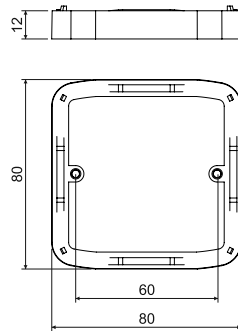
item	conf.	description	package	
			pcs	EAN
NR 80/R	HB	packed in shrink foil	10; 240	8595057615823

NRT

- extending frame



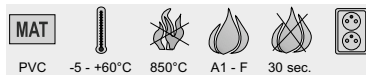
☑ For trunking boxes LK 80X16 T and LK 80X28 T.
 ☑ For trunking boxes for devices of Tango series.



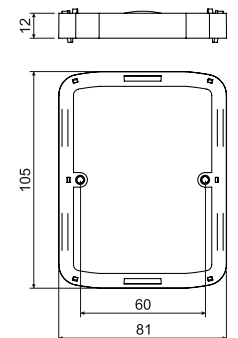
item	conf.	description	package	
			pcs	EAN
NRT	HB	packed in shrink foil	10; 300	8595057615755

NR 2ZT

- extending frame



☑ For trunking boxes LK 80X28 2ZT under the Tango double-socket.



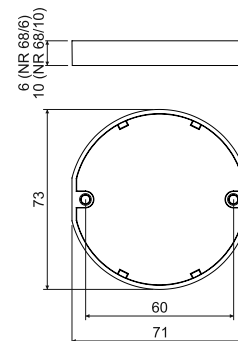
item	conf.	description	package	
			pcs	EAN
NR 2ZT	HB	packed in shrink foil	10; 200	8595057615779

NR 68/6; NR 68/10 - extending frame



MAT
 PVC -5 - +60°C 850°C A1 - F 30 sec. 71

- ☑ For individually installed boxes of the KU, KP and KUH lines, with the edge under the plastering or tiling surface.
- ☑ Can also be used for boxes for combined devices KP 64/2, 3, 4, 5.



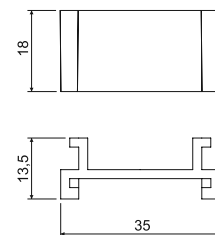
item	conf.	description		EAN
			pcs	
NR 68/6	ZB	packed in shrink foil, height 6 mm	10; 750	8595057619036
NR 68/10	ZB	packed in shrink foil, height 10 mm	10; 420	8595057619043

DR18 - compensating spacer



MAT
 PVC -5 - +60°C A1 - F 30 sec.

- ☑ To increase the spacing between the boxes KP 67/2, KP 67/3 by 10 mm.
- ☑ For mounting of devices with individual frames side by side.



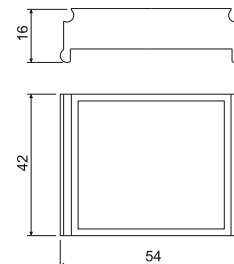
item	conf.	description		EAN
			pcs	
DR18	HB	packed in shrink foil	10; 1800	8595057612570

DR42 - compensating spacer



MAT
 PVC -5 - +60°C A1 - F 30 sec.

- ☑ To increase the spacing between the boxes KP 67X67 by 12 mm (to 83 mm).
- ☑ For mounting of devices with individual frames of Classic, Tango, Swing, Time series by ABB.

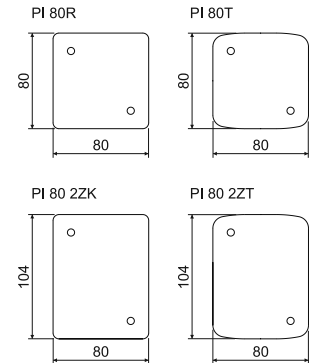


item	conf.	description		EAN
			pcs	
DR42	HB	packed in shrink foil	250; 500	8595057600508

Thermo-insulating pad



- ☑ Asbestos-free, harmless material.
- ☑ The pad increases the thermal resistance when installing wiring boxes on flammable surfaces.
- ☑ Corresponds to the shape of wiring box and devices.
- ☑ Pad thickness is 5 mm.



item	conf.	description		EAN
			pcs	
PI 80R	XX	for boxes LK 80/..., LK 80X28/1, LK 80R/..., LK 80X...R/1, LK 80X28 2R	10; 40	8595057614697
PI 80T	XX	for boxes LK 80X16 T, LK 80X28 T	10; 40	8595057614703
PI 80 2ZK	XX	for boxes LK 80X28 2ZK	10; 40	8595057614727
PI 80 2ZT	XX	for boxes LK 80X28 2ZT, box LK 80X28 2T, two pads must be used and adjusted by trimming to the required size	10; 40	8595057614710

Fixing screws

- ☑ Fixing material (self-drilling screw) used in wiring boxes.



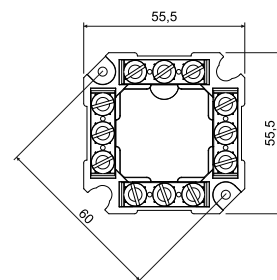
item	conf.	description		EAN
			pcs	
2.9X13V	ZNCR	for mounting boxes KU, KP, semicircular head with cross groove	50; 4000	8595057619371
2.9X13Z	ZNCR	for mounting the lids eg V 68 V 68, countersunk head with cross groove	50; 4000	8595057619388
2.9X16	ZNCR	for mounting terminal plates S-66, S-96, SP-96	50; 3000	8595057619395
2.9X22	ZNCR	for mounting extension frames NRT, NR 2ZT, NR 80/R	50; 2500	8595057619401
3.0X16	ZNCR	for mounting devices into wiring boxes into concrete	50; 3000	8595057619418
M3X40-3CH	ZNCR	for mounting boxes into hollow walls, triple thread significantly accelerates the mounting of box	50; 1000	8595057651470
M3X45-3CH	ZNCR	for mounting hollow wall boxes KPR 68/L, KO 97/L, KR 97/L, triple thread significantly accelerates the mounting of boxes	50; 1000	8595057651487
MP3-3CH	ZNCR	foot for mounting hollow wall boxes, triple thread significantly accelerates the mounting of box, foot shape ensures a firm fit in drywall	50; 3000	8595057651494

S-66 - terminal plate



MAT
 PA -30 - +105°C 850°C A1 - F 30 sec.

- ☑ Intended to universal distribution and instrument boxes with fixing spacing of 60 mm (E.g. KU 68 ... etc.).
- ☑ Four separate fields for connecting up to three conductors of up to 4 mm² in diameter.
- ☑ For voltages of up to 400 V.



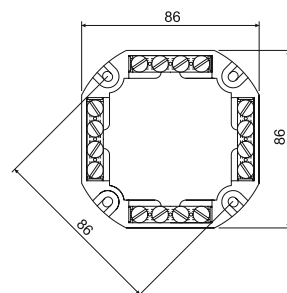
item	conf.	description		EAN
			pcs	
S-66	FB	packed in shrink foil	10; 160	8595057614734

S-96 - terminal plate



MAT
 PA -30 - +105°C 850°C A1 - F 30 sec.

- ☑ Intended into distribution boxes with fixing spacing of 86 mm (KR 97, KR 97/5, KR 97/L).
- ☑ Four separate fields for connecting up to four conductors of up to 4 mm² in diameter.
- ☑ For voltages of up to 500 V.



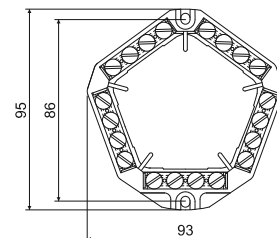
item	conf.	description		EAN
			pcs	
S-96	FB	packed in shrink foil	10; 120	8595057614741

SP-96 - terminal plate



MAT
 PA -30 - +105°C 850°C A1 - F 30 sec.

- ☑ Intended into distribution boxes with fixing spacing of 86 mm (KR 97, KR 97/5, KR 97/L).
- ☑ Five separate fields for connecting up to four conductors of up to 4 mm² in diameter.
- ☑ For voltages of up to 500 V.



item	conf.	description		EAN
			pcs	
SP-96	FB	packed in shrink foil	10; 180	8595057614758

6303-...

- terminal plate



PA -30 - +105°C 850°C A1 - F 30 sec.

- ✓ 6303-11: four separate fields for connecting up to 2x three and 2x four conductors of up to 4 mm².
- ✓ 6303-12: four separate fields for connecting up to five conductors of up to 4 mm².
- ✓ For voltages of up to 500 V.
- ✓ When used with terminal plate with box with protective terminal, ground connection must be removed..

item	conf.	description	package		EAN
			pcs		
6303-11	FB	packed loosely in cardboard, intended for metal boxes 7116 and 7216	12		8595057644953
6303-12	FB	packed loosely in cardboard, intended for metal boxes 7121 and 7221	12		8595057644960

TYP...

- multipolar terminal plate



PA6 -25 - +85°C 850°C A1 - F 30 sec.

- ✓ For voltages of up to 500 V.



item	conf.	description	dimensions		package		EAN	
			mm	pcs	mm ²	A		pcs
TYP210	FA	packed in cardboard, color - black	12 x 16 x 95	12	2,5	24	100	8595057613539
	HA	packed in cardboard, color - white					100	8595057614321
TYP310	FA	packed in cardboard, color - black	17 x 18 x 107	12	4	32	100	8595057613553
	HA	packed in cardboard, color - white					100	8595057614345
TYP412	FA	packed in cardboard, color - black	17 x 19 x 119	12	6	41	100	8595057613577
	HA	packed in cardboard, color - white					100	8595057614369
TYP512	FA	packed in cardboard, color - black	21 x 21 x 142	12	10	57	100	8595057613591
	HA	packed in cardboard, color - white					100	8595057614383
TYP612	FA	packed in cardboard, color - black	22 x 22 x 154	12	16	76	50	8595057613607
	HA	packed in cardboard, color - white					100	8595057614390

TYP... - screwless terminal plate



MAT
 PA -40 - +110°C 850°C 30 sec.

- ☑ Maximum working load of 24 A.
- ☑ Terminals are intended for full Cu conductors.
- ☑ For wires with cross-section from 1.0 mm² to 2.5 mm².
- ☑ For voltages of up to 450 V.
- ☑ Colour-coding stripe.

item	conf.	description					EAN
			mm	pcs	mm ²	pcs	
TYP015	XX	grey/transparent	2,5 x 9,5 x 9,5	5	1,0 - 2,5	100	8595057613614
TYP016	XX	orange/transparent	13,5 x 9,5 x 9,5	3	1,0 - 2,5	100	8595057613621
TYP017	XX	red/transparen	10,5 x 9,5 x 9,5	2	1,0 - 2,5	100	8595057613638
TYP018	XX	yellow/transparent	17,2 x 9,5 x 9,5	4	1,0 - 2,5	100	8595057613645

EPS 2 - equipotential terminal plate

without cover



with cover



MAT
 PA6 -30 - +105°C 850°C A1 - F 30 sec.

- ☑ Used for main connection according to ČSN 1-35 2000-4-41.
- ☑ Bonding.
- ☑ Use only for bonding the zero potential, cannot be used as a phase connection etc.
- ☑ Can be used in the box KO 125 E - the box is specially adapted for mounting.
- ☑ Possibility to install also in boxes KT 250/1 and KT 250/L.

item	conf.	description					EAN
			max. dimensions (mm)	pcs	mm ²	pcs	
EPS 2	XX	without cover	126 x 60 x 50 (62 at unscrewed screws)	4	2,5 - 6	1	8595057618374
	X1	with cover		6	4 - 16		
				2	10 - 95		
				1	30 x 4 (belt)	1	8595057687806

EPS 3 - equipotential terminal plate



MAT
 PA6 -25 - +55°C 850°C A1 - F 30 sec.

- ☑ Used for main connection according to ČSN 1-35 2000-4-41.
- ☑ Bonding.
- ☑ Use only for bonding the zero potential, cannot be used as a phase connection etc.
- ☑ Can be used in the box KO 100 E.

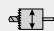

item	conf.	description					EAN
			max. dimensions (mm)	pcs	mm ²	pcs	
EPS 3	XX	without cover	104 x 60 x 40 (48 at unscrewed screws)	8	0,75 - 10	1	8595057668676
				6	1,5 - 16		

VPTU

- universal carrier

- ☑ In combination with other components, it is used for drill assembly.
- ☑ Minimum diameter of chuck and of drilling machine is 11 mm.



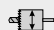

item	conf.			EAN
		mm	pcs	
VPTU	XX	6	1	8595057616141

VPT...

- saw-drill

- ☑ Designed for precise holes for mounting boxes into hollow walls made of drywall.
- ☑ Drill size is designed for specific types of boxes.



item	conf.			EAN
		mm	pcs	
VPT 40	XX	40	1	8595057616097
VPT 64	XX	68	1	8595057616103
VPT 68	XX	73,5	1	8595057616110
VPT 79	XX	79,5	1	8595057616127
VPT 97	XX	103,5	1	8595057616134

Parts needed for setting up the drill

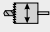

universal carrier	saw-drill					for boxes
	VPTU	VPT 40	VPT 64	VPT 68	VPT 79	
X	X					KT 250/L, KO 110/L, KO 125/1L
X					X	KO 97/L, KR 97/L, KOM 97/LU
X			X			KUL 68-45 LD, KUL 68-45 LD/2, KU 68 LD/1HF, KUH 1/L, KPR 68/71L, KPRL 68-70/LD, KU 68/71L1, KPM 64/LU, KU 68 LA/1HF
X		X				KP 64/LD, KPRL 64-40 LD, KPL 64-50/2LD, KPL 64-50/3LD, KP 64/4L, KP 64/5L, KP 64/LD HF
X				X		KI 68 L/1

VDS 68

- drill for hollow walls

- ☑ Complete set for the most common wiring boxes.
- ☑ Minimum diameter of chuck and of drilling machine is 11 mm.





item	conf.	 mm	 pcs	EAN	parts of configuration	for boxes
VDS 68	XX	73,5	1	8595057658967	VPTU + VPT 68	KPM 64/LU, KU 68 LA/1HF, KUL 68-45 LD, KUL 68-45 LD/2, KUH 1/L, KU 68 LD/1HF, KPR 68/71L, KU 68/71L1, KPRL 68-70/LD

FR 68 SDS

- non-hammered masonry cutter

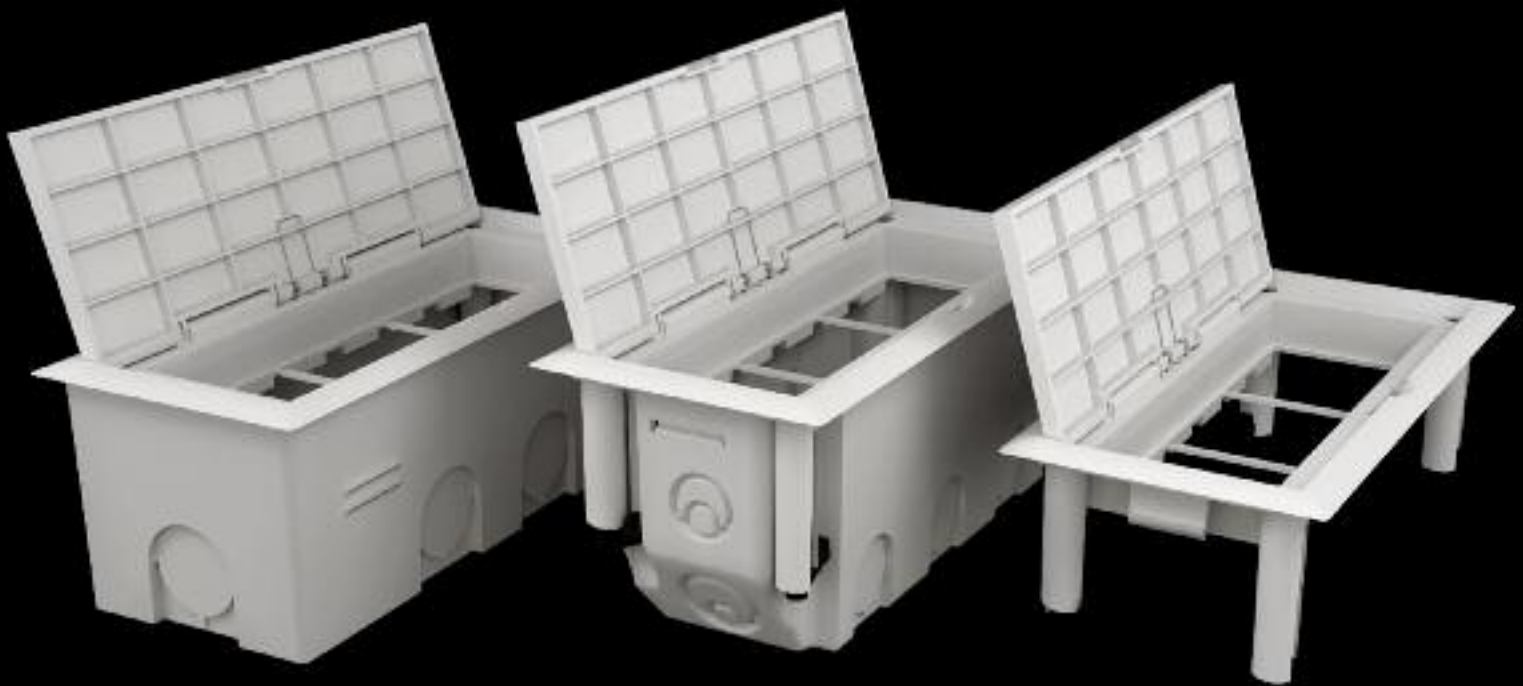
- ☑ Cutter intended for **non-impact** drilling in brickwork or aerated cement.
- ☑ SDS plus clamping system.
- ☑ For boxes KU 68, KP 68, and KP 64/...



item	conf.	 mm	 pcs	EAN
		mm	pcs	
FR 68 SDS	XX	80	1	8595057615915



Multi-purpose box KOPOBOX mini



- Multi-purpose device box for modular data and power sockets.
- Use of parapet trunkings PK 110X70 D and PK 110X70 D HF, further to the parget, the same as for classic boxes, very suitable there is their use to plasterboards and to furniture.
- Its use the KOPOBOX mini finds as well as floor box at the space with smaller operating load, at casted concrete or hollow floors.

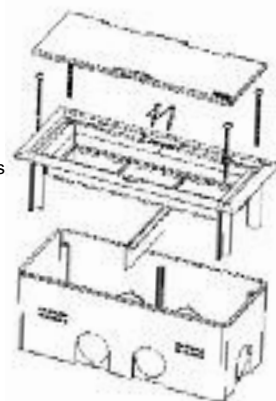
www.kopos.com

KOPOBOX MINI B

- the configuration of multi-purpose device box



- ☑ The dimension of completed configuration: 175 x 80 x 68 mm.
- ☑ The configuration is intended for assembling to/under parget or to concrete floors.
- ☑ Prior to installation of assembling box there is necessary to insert the distance rail, which is replaced upon the plaster induration.
- ☑ Subgrade assembling box puts down into plaster seam. During the completion the assembling box is subsequently shouldered by KOPOBOX MINI box frame.
- ☑ It enables the assembling of modular devices of 3 pcs 45x45, or 6 pcs 22,5x45 or their combination.
- ☑ Suitable for QUADRO instruments (pg. 2-48), tailor-made for KOPOS products. Installation of instruments made by ABB, Legrand, PEHA and Simon Connect is also possible.
- ☑ Max. load: 1000 N to total surface of cover (lid + frame).

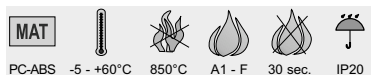


item	conf.	description	☑	EAN
			pcs	
KOPOBOX MINI B	HB	the colour of perspective parts (lid + frame) - white RAL 9003	1	8595568920065
	KB	the colour of perspective parts (lid + frame) - light grey RAL 7035	1	8595568920072



KOPOBOX MINI L

- the configuration of multi-purpose device box



- ☑ The dimension of completed configuration: 175 x 80 x 75 mm.
- ☑ Opening dimensions for cutting: 163 x 67 mm.
- ☑ The configuration is intended for assembling to furniture, into the hollow walls or to double floors.
- ☑ Box KOPOBOX MINI L there is possible to assemble to the thickness of the desks from 9 till 38 mm.
- ☑ Fast assembling by help of fixation lugs.
- ☑ The bottom cover box enables the fixation of cables against their rapture.
- ☑ KOPOBOX mini L enables the assembling of modular devices of 3 pcs 45x45 or 6 pcs 22,5x45 or their combination.
- ☑ Suitable for QUADRO instruments (pg. 2-48), tailor-made for KOPOS products. Installation of instruments made by ABB, Legrand, PEHA and Simon Connect is also possible.

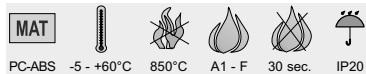


item	conf.	description	☑	EAN
			pcs	
KOPOBOX MINI L	HB	the colour of perspective parts (lid + frame) - white RAL 9003	1	8595568920041
	KB	the colour of perspective parts (lid + frame) - light grey RAL 7035	1	8595568920058
	N1B	the colour of perspective parts (lid + frame) - titanium, upon request	1	8595568921895



KOPOBOX MINI P

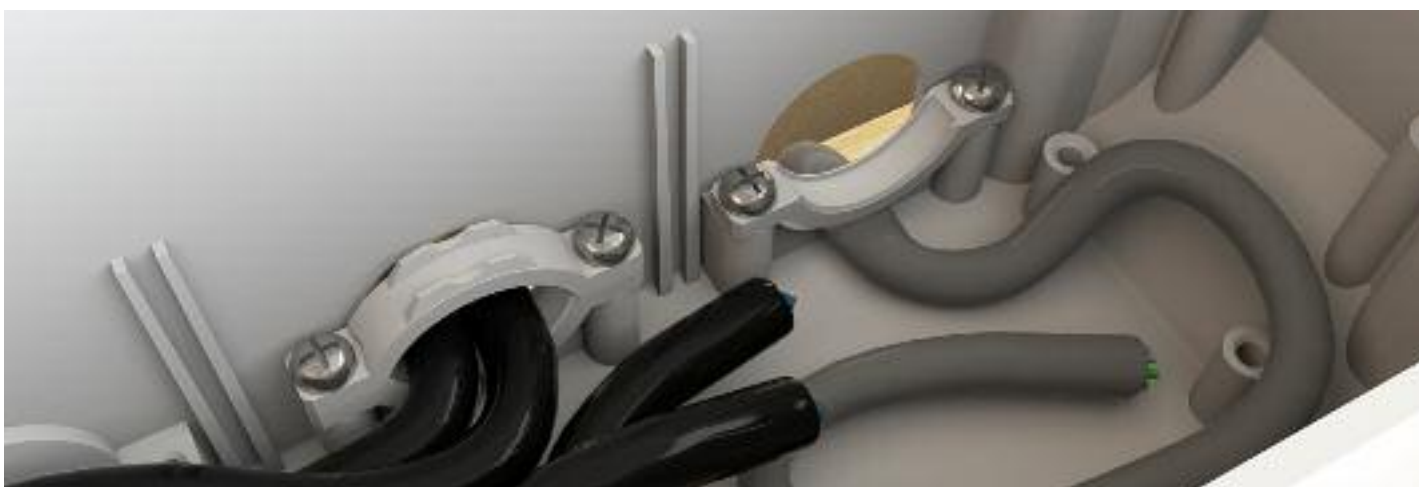
- the configuration of multi-purpose device box



- ✓ The dimension of completed configuration: 175 x 80 x 50 mm.
- ✓ The configuration is intended for assembling into the parapet trunkings PK 110X70 D and PK 110X70 D HF.
- ✓ The bottom cover box enables the fixation of cables against their rapture.
- ✓ KOPOBOX MINI P enables the assembling of modular devices of 3 pcs 45x45 or 6 pcs 22,5x45 or their combination.
- ✓ Suitable for QUADRO instruments (pg. 2-48), tailor-made for KOPOS products. Installation of instruments made by ABB, Legrand, PEHA and Simon Connect is also possible.



item	conf.	description	EAN	
			pcs	
KOPOBOX MINI P	HB	the colour of perspective parts (lid + frame) - white RAL 9003	1	8595568920089



MAT material

| temperature resistance

self-snuffing

IP protection

fire reaction class of underlying material

flaming loop test

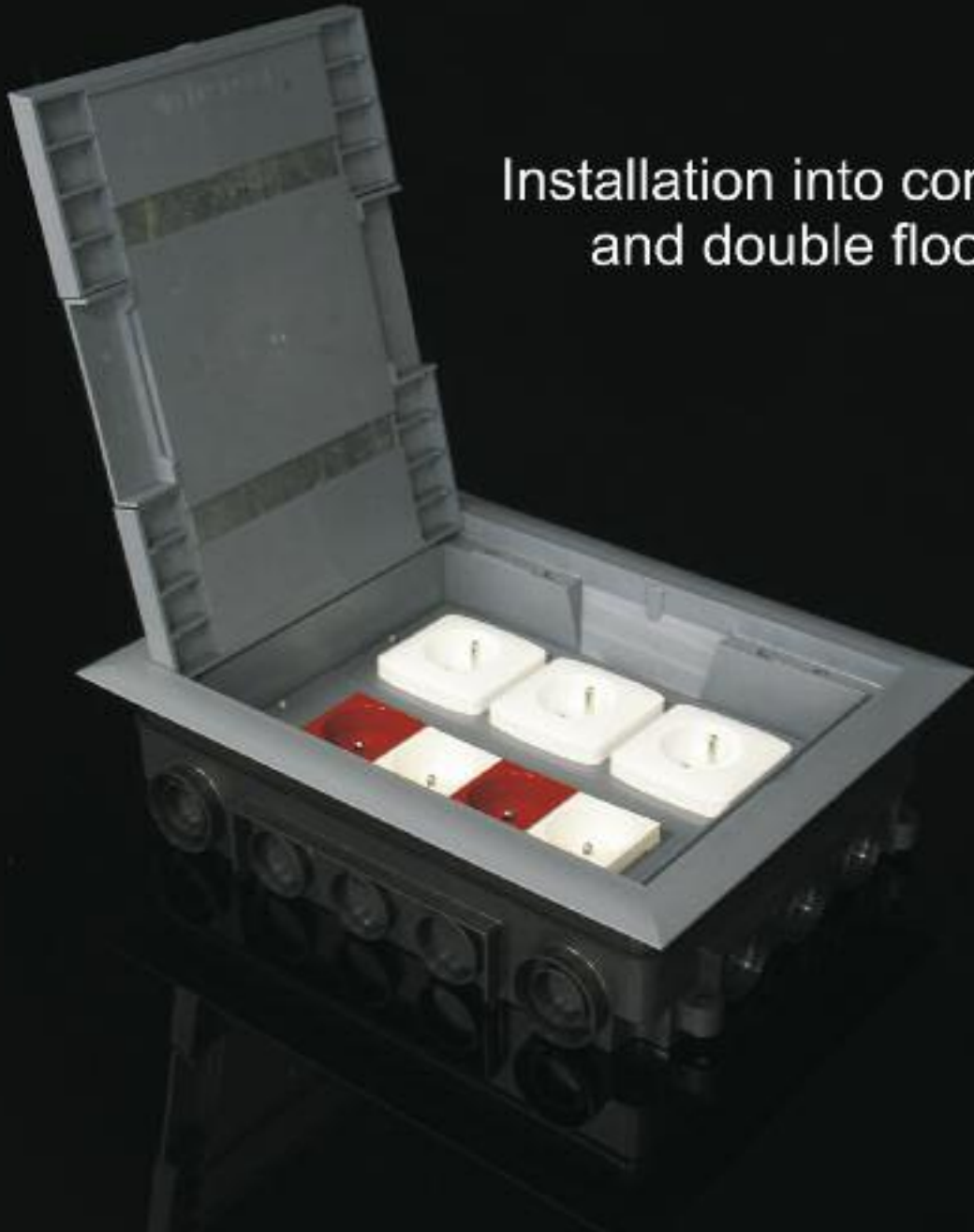
halogen-free material

package



KOPOS

Floor box KOPOBOX



Installation into concrete
and double floors



• KOPOBOX 57 - the frame for modular devices of 45 x 45 mm

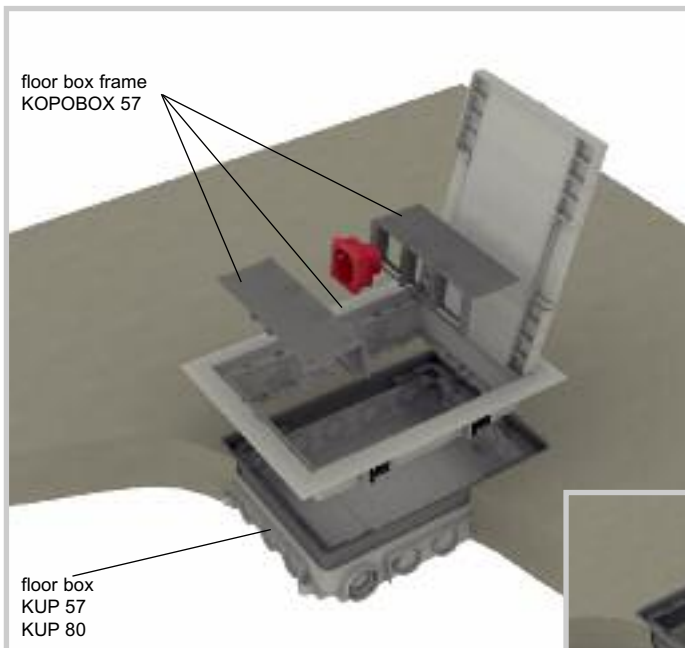


• KOPOBOX 80 - the frame for classical and modular devices of 45 x 45 mm

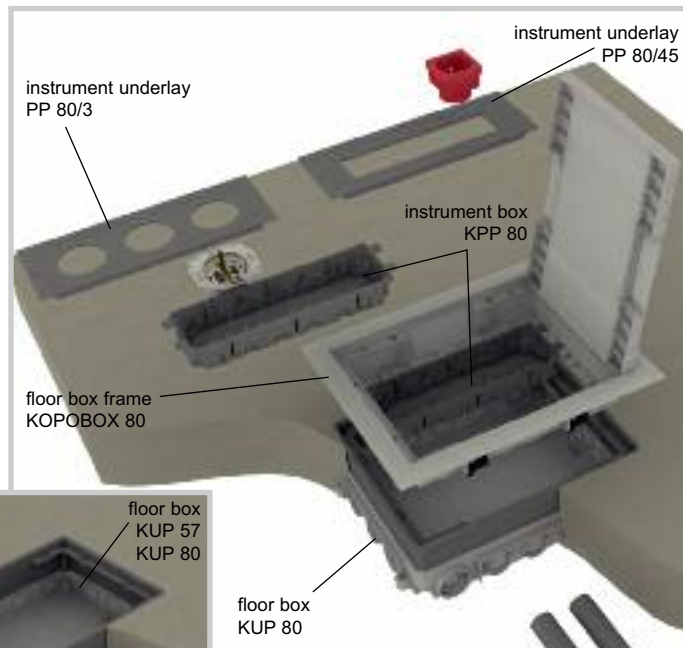


• KUP 57 (80) - universal floor box into the concrete

Using floor boxes in a concrete floor



KOPOBOX 57 - set



KOPOBOX 80 - set



The complete set of a floor box composed of KOPOBOX 57 and KUP 57 or KUP 80 is designated for the assembly of the modular devices 45 x 45 mm. The mounting feet (designed for doubled floors) are not used during the installation of the box KOPOBOX 57 into KUP.

Instructions for the assembly of KOPOBOX 57:

Installation box KUP 57 is suitable for the concrete layers from 57 mm up to 75 mm, KUP 80 is suitable for the concrete layers from 80 up to 95 mm. There is necessary to fix the installation box on the background surface. The height of the box can be adjusted by raising of insertion in range from 57 up to 75 mm (KUP 57) or from 80 up to 95 mm (KUP 80) with screws.

In case of concrete layer higher than 75 mm (KUP 57) or 95 mm (KUP 80) is necessary to use and levelling set SN (4 pcs) anchored to the surface. The levelling set enables to adjust the height of the box by 35 mm.

The box is adapted for the installation of electrical pipes. Every single input together with raising insertion for height setting must be sealed to avoid breaking the concrete into the box.

During concreting it is necessary to use the cover plate (part of the package KUP) against filling the box with concrete mixture. After hardening of the concrete mixture to remove the cover boards of floor box KUP. Floor box KUP after laying the final coverings fitted with a frame KOPOBOX 57. Fixing frame KOPOBOX 57 is using the enclosed screw diameter 3,9x13. In case of higher floor covering use the included screws diameter 3,9x19. Into frame KOPOBOX 57 are installed holders of the devices and implement the electrical modular devices.

KOPOBOX 57 is mainly designed for cables with direct plugs. Use of cables with indirect plugs is limited. Use of adapters and chargers is limited by their size. The cover of the frame is determined for floor covering with highest layer of 7 mm.

Considering IP, the box is not suitable to be moistened with the floor cleaning machines. Recommended floor covering are carpets or floating wooden floors.

It is possible to install QUADRO modular instruments in the system (pg. 2-48), or instruments with compatible construction, e.g. those made by ABB, PEHA, Legrand, OBO Bettermann...

Floor boxes KOPOBOX are designed for a maximum load of 1500 N.



The complete set of the floor box composed of KOPOBOX 80 and KUP 80 is designated for the installation of classic and also modular devices. The selection of the type of devices being installed is given by the type of the devices underlay. The mounting feet (designed for doubled floors) are not used during the installation of the box KOPOBOX 80 into KUP 80.

Instructions for the assembly of KOPOBOX 80:

Installation box KUP 80 is suitable for the concrete layers from 80 mm up to 95 mm. There is necessary to fix the installation box on the background surface. The height of the box can be adjusted by raising of insertion in range from 80 up to 95 mm with screws.

In case of concrete layer higher than 95 mm there is necessary to use and levelling set SN (4 pcs) anchored to the surface. The levelling set enables to adjust the height of the box by 35 mm.

KUP 80 is adapted for the installation of electrical pipes. Every single input together with raising insertion for height setting must be sealed to avoid breaking the concrete into the box.

During placement of concrete it is necessary to use and cover board (included KUP 80) to prevent the box from being filled with concrete. After the concrete mix hardens and the cover board is removed the floor box KUP 80 is fitted with and frame of the floor box KOPOBOX 80. Subsequently the instrument boxes KPP 80 are inserted to the frame. On the base of installed apparatus, PP 80 instrument underlay should be used.

Modular devices:

- installation into KPP 80 + PP 80/45,
- installation directly on PP 80/45, while using the cross-piece PKUP.

Classic devices:

- installation into KPP 80 + PP 80/3 for the non-fitted assembly openings use the end cap ZPP.

KOPOBOX 80 is mainly designed for cables with indirect plugs. Use of cables with direct plugs is limited and use of adapters and chargers is limited.

The cover of the frame is determined for floor covering with highest layer of 7 mm. Considering IP, the box is not suitable to be moistened with the floor cleaning machines. Recommended floor covering are carpets or floating wooden floors.

It is possible to install QUADRO modular instruments in the system (pg. 2-48), or instruments with compatible construction, e.g. those made by ABB, PEHA, Legrand, OBO Bettermann...

Floor boxes KOPOBOX are designed for a maximum load of 1500 N.

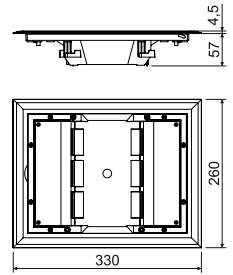
KOPOBOX® 57

- floor box frame



MAT						
PA	-5 - +105°C	850°C	A1 - F	30 sec.		IP30

- ☑ Designed for installation into the universal floor box KUP 57 or KUP 80.
- ☑ It is possible to assemble QUADRO modular instruments of 45 x 45 mm (max 6 pcs - pg. 2-48), or instruments with compatible construction, e.g. those made by ABB, PEHA, Legrand, OBO Bettermann...
- ☑ Reinforcement of the lid by sheet metal ensures its high mechanical strength while maintaining the possibility to insert the final floor covering. The lid has 2 tilt flaps enabling the outlet of the cables from the box.
- ☑ Included are screws for attaching the frame to the floor box KUP.
- ☑ KOPOBOX comes in dark grey as a standard. For orders over 500 pieces we can supply different RAL colour (except for actual device carriers).
- ☑ The frame is separately applied for double floors with a thickness of 10-40 mm, the proposition of hole to insert the floor box is 218 x 288 mm.



item	conf.	description		EAN
			pcs	
KOPOBOX 57	LB	color - dark grey RAL 7012	1	8595057690721

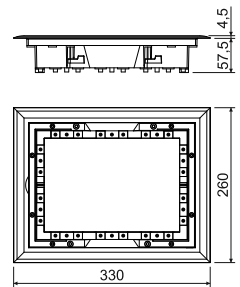
KOPOBOX® 80

- floor box frame



MAT						
PA	-5 - +105°C	850°C	A1 - F	30 sec.		IP30

- ☑ Designed for installation into the universal floor box KUP 80.
- ☑ The use of KPP 80 instrument boxes (max 2 pcs) together with PP 80/3 instrument plates allows the assembly of standard instruments (max 6 pcs); with PP 80/45 instrument plates allows the assembly of QUADRO modular instruments (max 8 pcs - pg. 2-48) or instruments with compatible construction, e.g. those made by ABB, PEHA, Legrand, OBO Bettermann...
- ☑ Reinforcement of the lid by sheet metal ensures its high mechanical strength while maintaining the possibility to insert the final floor covering. The lid has 2 tilt flaps enabling the outlet of the cables from the box.
- ☑ Included are screws for attaching the frame to the floor box KUP.
- ☑ KOPOBOX comes in dark grey as a standard. For orders over 500 pieces we can supply different RAL colour (except for actual device carriers).
- ☑ The frame is separately applied for double floors with a thickness of 10-40 mm, the proposition of hole to insert the floor box is 218 x 288 mm.



item	conf.	description		EAN
			pcs	
KOPOBOX 80	LB	color - dark grey RAL 7012	1	8595057690738

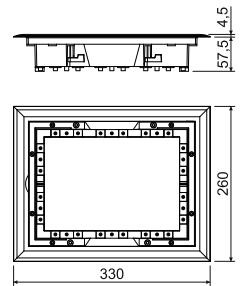
PP 80/K-5

- pulling floor box

MAT					
PA	-5-+105°C	850°C	A1 - F	30 sec.	IP30



- ☑ Designed for installation into the floor box KUP 80.
- ☑ Use as a blind cover for threading cables.
- ☑ After frame installation, put the final flooring on support sheet metal; the frame is not designed for device installation.
- ☑ Additional device installation is possible only when you change the frame on KOPOBOX 80.
- ☑ The proposition of hole to insert the floor box is 218 x 288 mm.



item	conf.	description		EAN
			pcs	
PP 80/K-5	LB	color - dark grey RAL 7012	1	8595057699571

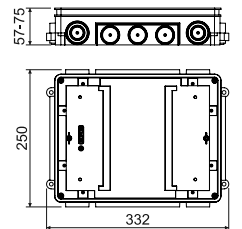
KUP 57

- universal floor box

MAT				
PA	-5-+105°C	850°C	A1 - F	30 sec.



- ☑ After hardening of the concrete mixture, floor box KOPOBOX 57 is fitted.
- ☑ The package includes a cover plate to prevent the box from being poured over with concrete.
- ☑ The minimum height of the concrete layer is 57 mm, maximum 75 mm. The desired height of the box is adjusted by raising the internal insert using screws in the corners of the box.
- ☑ For a concrete layer higher than 75 mm, it is necessary to use a levelling set SN (4 pcs).
- ☑ Box is designed for mounting el. pipes knockouts can be made by flow drill VBU and floor channel PUK.



item	conf.	description		EAN
			pcs	
KUP 57	FB	color - black	1	8595057690745

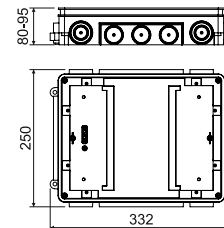
KUP 80

- universal floor box



MAT PA -5 - +105°C 850°C A1 - F 30 sec.

- ☑ After hardening of the concrete mixture, floor box KOPOBOX 57 or KOPOBOX 80 is fitted.
- ☑ The package includes a cover plate to prevent the box from being poured over with concrete.
- ☑ The minimum height of the concrete layer is 80 mm, maximum 95 mm. The desired height of the box is adjusted by raising the internal insert using screws in the corners of the box.
- ☑ For a concrete layer higher than 75 mm, it is necessary to use a levelling set SN (4 pcs).
- ☑ Box is designed for mounting el. pipes knockouts can be made by flow drill VBU and floor channel PUK.



item	conf.	description		EAN
			pcs	
KUP 80	FB	color - black	1	8595057690752

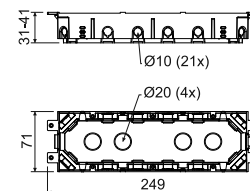
KPP 80

- instrument floor box



MAT PA -5 - +105°C 850°C A1 - F 30 sec.

- ☑ Universal device box for mounting into KOPOBOX 80 (max. 2 pcs).
- ☑ Device screws, cable link screws and cable fixing links are included.
- ☑ Depth of the box is adjustable by changing the position of the bottom.



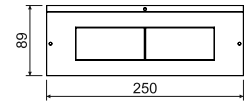
item	conf.	description		EAN
			pcs	
KPP 80	LB	color - dark grey	1	8595057690769

PP 80/...

- instrument underlay



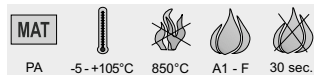
- ✓ Device plate is installed into the floor box KOPOBOX 80 frame.
- ✓ Installation is recommended together with the device box KPP 80.
- ✓ When installing multiple modular devices, it is appropriate to remove the inner partition.
- ✓ External dimensions of other device pads are identical with the drawing.



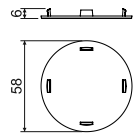
item	conf.	description	package	
			pcs	EAN
PP 80/0	LB	full plate for covering the unoccupied parts of KOPOBOX, color - dark grey	1; 100	8595057690783
PP 80/3	LB	plate for mounting up to 3 pcs of standard devices, color - dark grey	1; 100	8595057690790
PP 80/45	LB	serve for assembly of up to 4 QUADRO modular instruments (pg. 2-48) or instruments with compatible construction, e.g. those made by companies ABB, PEHA, Legrand, OBO Bettermann..., color - dark grey	1; 100	8595057690806

ZPP

- end cap



- ✓ To blind vacant holes on the device pad PP 80/3.



item	conf.	description	package	
			pcs	EAN
ZPP	LB	color - dark grey	1; 1800	8595057690820

PKUP - partition wall

MAT PA -5 - +105°C 850°C A1 - F 30 sec.



- ☑ To divide the interior of KOPOBOX 80.
- ☑ Useful when installing modular instruments in the instrument supports PP 80/45 if boxes KPP 80 are not used.



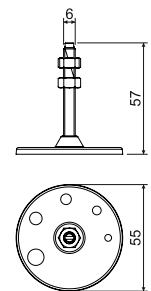
item	conf.	description	EAN	
			pcs	
PKUP	LB	color - dark grey	10; 480	8595057690837

SN - leveling set

MAT PE -5 - +105°C 850°C A1 - F 30 sec.



- ☑ To set the exact height of the universal box KUP 57 or KUP 80 when pouring into concrete floors.
- ☑ To prevent wash-up with concrete, fix the box using M6 nuts - included in the package.
- ☑ Sold in sets containing 4 adjuster pieces.
- ☑ Groove for screwing allowing comfortable and precise height adjustment.



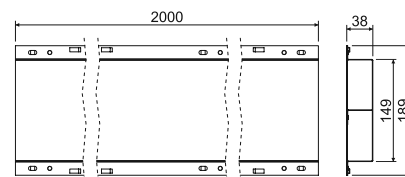
item	conf.	description	EAN	
			pcs	
SN	XX	the package includes 4 pieces - for all corners of the box	1; 90	8595057690844

PUK 38X150 S1

- floor trunking



- ☑ To connect boxes KUP 57 or KUP 80.
- ☑ Projections for quick and easy channel connection to ensure conductive bonding using PLUK or PLUK 1.



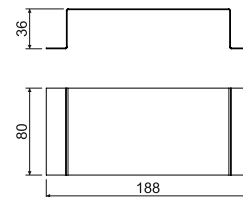
item	conf.	description		EAN
			m	
PUK 38X150 S1	S	galvanized Sendzimir	2; 240	8595568904416

SPUK

- coupling floor trunking



- ☑ The overlap joints of floor channels.
- ☑ Prevents ingress of concrete into channels.
- ☑ Attached to the floor with screws or gun nails.

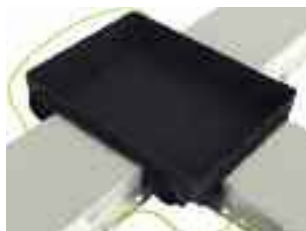



item	conf.	description		EAN
			pcs	
SPUK	S	galvanized Sendzimir	1	8595568904423

PLUK

- connecting string

- ☑ Provides a conductive bonding of floor channels.

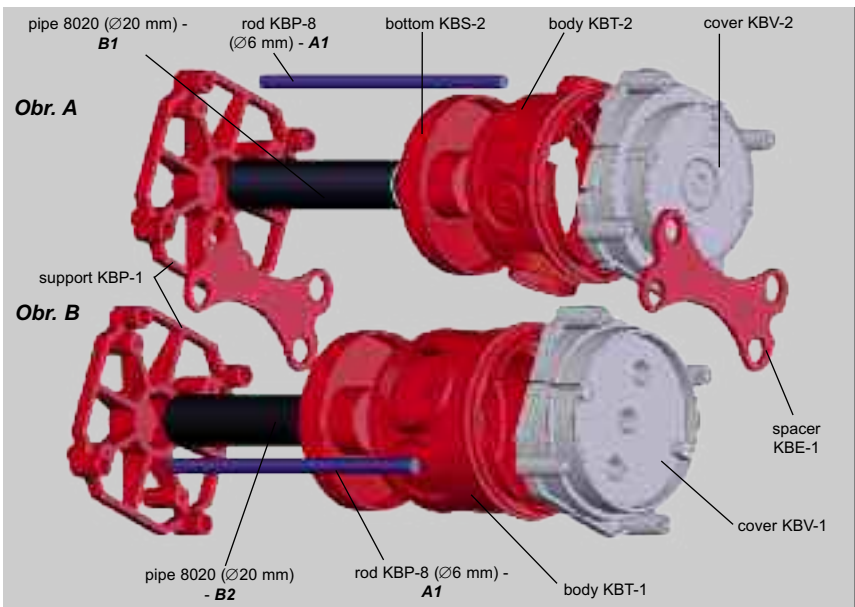


item	conf.	description		EAN
			pcs	
PLUK	XX	length of 250 mm, to connect channels when coming out at an angle of 90°	10	8595568904430
PLUK 1	XX	length of 550 mm, to connect channels when coming out at an angle of 180°	10	8595568904447

Way of using the concrete program and determining the lengths of individual spacer components

The set is designed for cast concrete constructions and enables subsequent assembly of all available appliances (sockets, switches). The axial distance of the used appliances is 80 mm (Klasik) or 71 mm (Tango), spacer KBE-1 allows increasing spacing of 80 mm to 88 mm. Components marked with the type number .../71 are designated for appliances with the common frame with spacing of 71 mm (Tango).

Basic usage to spacing of 80 or 88 mm



Cover KBV-1 (KBV-2) is mounted to the fixed part of the casing. Then body KBT-1 (KBT-2) is assembled together with the bottom piece KBS-2 and pushed to the already fixed cover KBV.

Spacing pipe 8020 is inserted to support KBP-1 as well as the rod KBP-8. The back part of the set assembled in this way is slipped over the already mounted box and cover.

KBV-1 cover can be applied for assembly of and double socket.

The system can be completed from the side of the support KBP-1 which is mounted to the fixed part of the casing.

Obr. 1A

Minimum height of the set while using the element KBT-2 (L):

$L = 90 \text{ mm}$

Length of spacing rods: $A1 = L - 20 \text{ mm}$

Length of spacing pipe 8020: $B1 = L - 65 \text{ mm}$

Obr. 1B

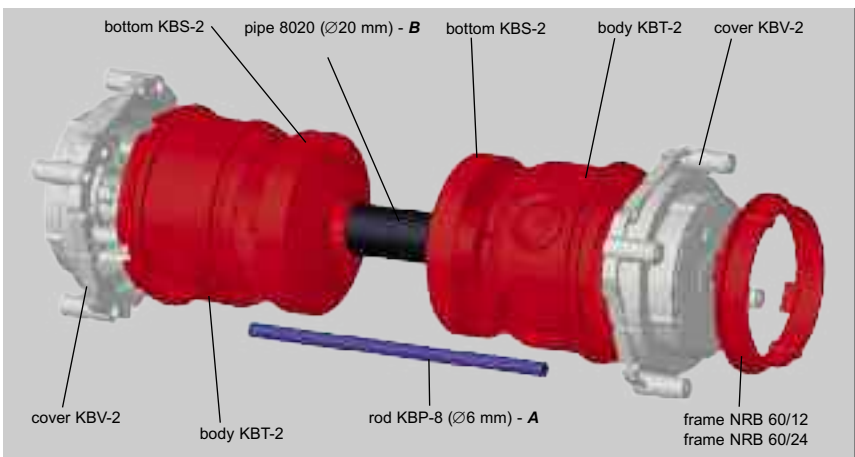
Minimum height of the set while using the element KBT-1 (L):

$L = 110 \text{ mm}$

Length of spacing rods: $A1 = L - 20 \text{ mm}$

Length of spacing pipe 8020: $B2 = L - 85 \text{ mm}$

Example of assembly to spacing 80 mm



Cover KBV-2 is mounted to the fixed part of the casing. Then body KBT-1 (KBT-2) is assembled together with the bottom piece KBS-2 and pushed to the already fixed cover KBV.

The other box is assembled, pipe 8020 is inserted as well as rod KBP-8. The back part of the set assembled in this way is slipped over the already mounted box and cover.

Minimum height of the set while using the element:

KBT-2 $L2 = 140 \text{ mm}$

KBT-1 $L1 = 185 \text{ mm}$

Length of spacing rod while using the element:

KBT-2 $A = L2 - 10 \text{ mm}$

KBT-1 $A = L1 - 10 \text{ mm}$

Length of spacing pipe 8020 while using the element:

KBT-2 $B = L2 - 112 \text{ mm}$

KBT-1 $B = L1 - 152 \text{ mm}$



KBT-1

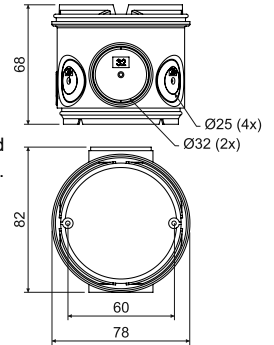
- high body of the box into concrete



HF



- ✓ The body of the box is provided with a fixture for connection to the lid KBV and bottom KBS.
- ✓ The perimeter of the box body contains pre-marked holes to drill inlets for pipes of EN 25 and 32, inlets can easily be made in the desired locations using a drill and the respective drilling blade.
- ✓ For devices with greater mounting depth.
- ✓ The box can be fitted with terminal plate S-66, we recommend its mounting to the box body before assembly.
- ✓ For the double-socket the KBV-1 lid is necessary.



item	conf.	description	package	
			pcs	EAN
KBT-1	AB	packed in shrink foil, color - orange	10; 100	8595057632455

KBT-2

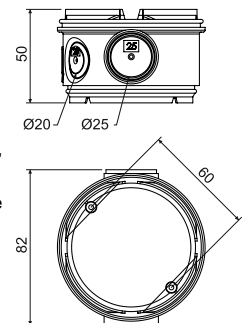
- low body of the box into concrete



HF



- ✓ The body of the box is provided with a fixture for connection to the lid KBV and bottom KBS.
- ✓ The perimeter of the box body contains pre-marked holes to drill inlets for pipes of EN 20 and 25, inlets can easily be made in the desired locations using a drill and the respective drilling blade.
- ✓ The box can be fitted with terminal plate S-66, we recommend its mounting to the box body before assembly.
- ✓ For the double-socket the KBV-1 lid is necessary.



item	conf.	description	package	
			pcs	EAN
KBT-2	AB	packed in shrink foil, color - orange	10; 80	8595057632462

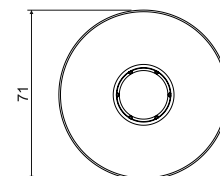
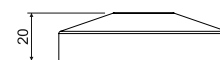
KBS-2

- bottom of the box into concrete



MAT			
PP	-5 - +60(90)°C	650°C	A1

- ☑ The bottom is suitable for covering the bodies of boxes KBT-1 and KBT-2.
- ☑ The design of the bottom allows the insertion of a pipe of 20 mm in diameter.
- ☑ The inserted pipe can be used to interconnect the boxes.



item	conf.	description		EAN
			pcs	
KBS-2	AB	packed in shrink foil, color - orange	10; 240	8595057632516

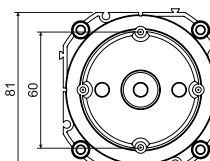
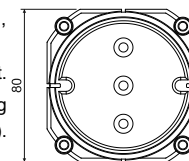
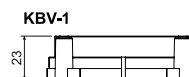
KBV-..

- cover of the box into concrete



MAT				
PP	-5 - +60(90)°C	650°C	A1	KBV-1

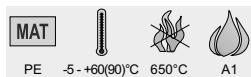
- ☑ The lid can be attached to the formwork using nails.
- ☑ After hardening of the concrete, remove part of the rip-out part of the lid, making space for mounting.
- ☑ When applying additional stucco, blind cover ZV 68 can be used to cover it.
- ☑ To adjust the height when applying additional plaster, you can use extending frame NR 68/6, NR 68/100 (KBV-1), or NRB 60/12 and NRB 60/24 (KBV-2).
- ☑ For the double-socket the KBV-1 lid is suitable.



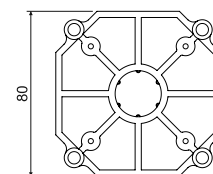
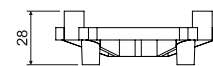
item	conf.	description		EAN
			pcs	
KBV-1	KB	packed in shrink foil, color - light grey	10; 140	8595057632509
KBV-2	KB	packed in shrink foil, color - light grey	10; 160	8595057632486

KBP-1

- support of the box into concrete



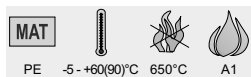
☑ Use the support to fix the boxes between the formwork walls.



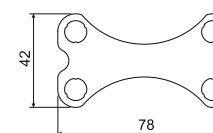
item	conf.	description	EAN	
			pcs	
KBP-1	AA	packed in shrink foil, color - orange	10; 150	8595057608115

KBE-1

- spacer for concrete

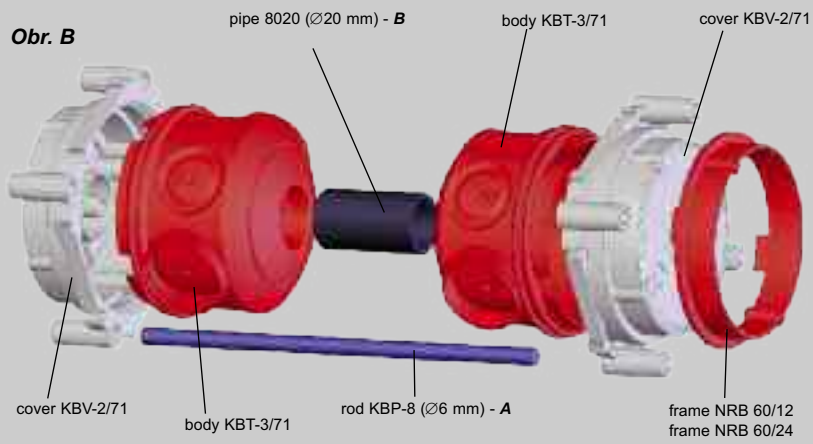
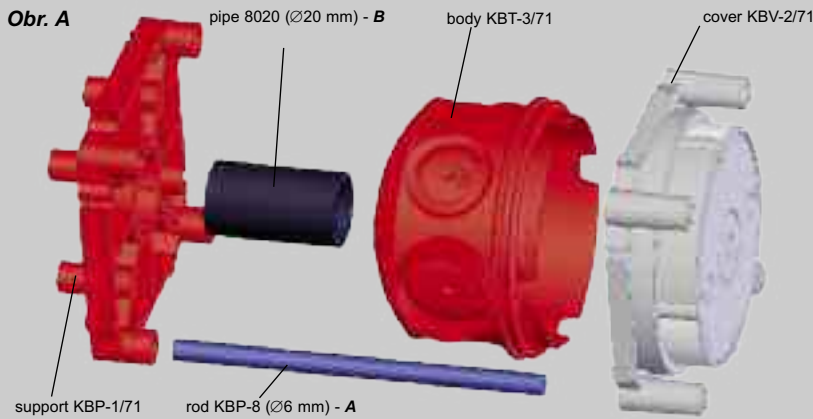


☑ To increase and maintain the 88 mm spacing between boxes.
 ☑ For mounting devices with individual frames, according to device type, a gap remains between the installed devices.



item	conf.	description	EAN	
			pcs	
KBE-1	AB	packed in shrink foil, color - orange	10; 2420	8595057614475

Example of assembly to spacing 71 mm



The cover KBV-2/71 will be attached to and firm part of and boarding. The body KBT-3/71 will be pressed into and cover KBV-2/71 having been fixed before.

We will assembly the other box completely (see picture B), push and distance pipe 8020 and four distance bars KBP-8. The back part of and set assembled in this way will be slipped onto and mounted box and cover.

The collar NBR is used to adjust the height of and box during subsequent application of and plaster.

The system may be assembled from the side of and support KBP-1/71, which we fix on the firm part of and boarding.

Obr. A

Minimum height of the set while using the element KBT-3/71 (L):

L = 80 mm

Length of spacing rods: **A = L - 20 mm**

Length of spacing pipe 8020: **B = L - 65 mm**

Obr. B

Minimum height of the set while using the element KBT-3/71 (L):

L = 125 mm

Length of spacing rods: **A = L - 10 mm**

Length of spacing pipe 8020: **B = L - 110 mm**

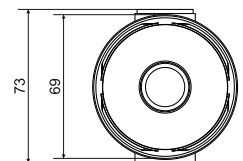
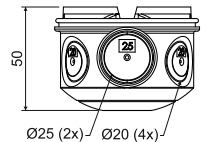
KBT-3/71

- low box into concrete



MAT				
PP	-5 - +60(90)°C	650°C	A1	71

- Designed for connection with lid KBV-2/71.
- For devices in the combined frames with 71 mm spacing.
- Inlets for pipes of EN 20 or EN 25 can be easily made using drill VBU 1 and the respective drilling blade.
- The design of the bottom allows inserting a pipe of diameter 20 allowing interconnection of boxes.



item	conf.	description		EAN
			pcs	
KBT-3/71	AB	packed in shrink foil, color - orange	10; 100	8595057667853

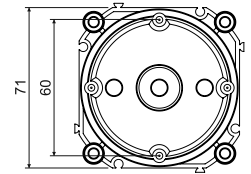
KBV-2/71

- cover of the box into concrete



MAT				
PP	-5 - +60(90)°C	650°C	A1	71

- ✓ The lid can be attached to the formwork using nails.
- ✓ After hardening of the concrete, remove part of the rip-out part of the lid, making space for mounting.
- ✓ When applying additional stucco, blind cover ZV 68 can be used to cover it.
- ✓ To adjust the height when applying additional plaster, you can use extending frame NR 68/6 or NR 68/10.



item	conf.	description		EAN
			pcs	
KBV-2/71	KB	for devices in the combined frames with 71 mm spacing	10; 200	8595057632493

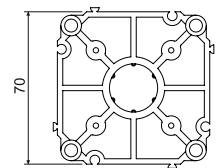
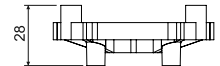
KBP-1/71

- support of the box into concrete



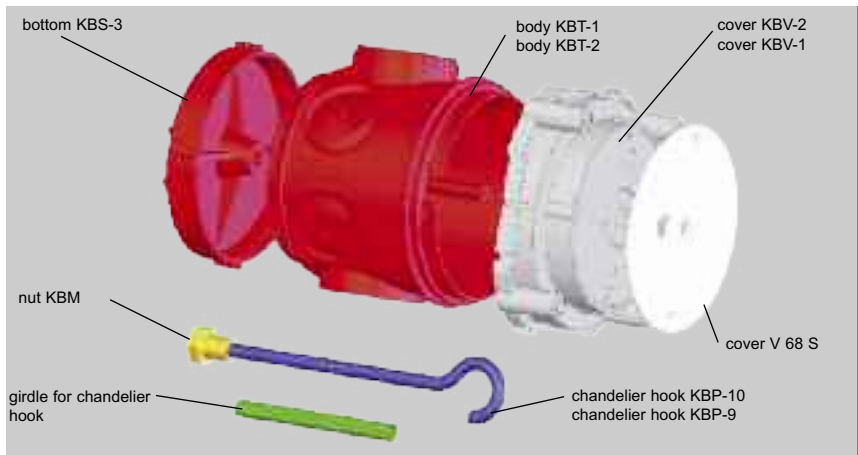
MAT				
PE	-5 - +60(90)°C	650°C	A1	71

- ✓ Use the support to fix the boxes between the formwork walls.



item	conf.	description		EAN
			pcs	
KBP-1/71	AB	for devices in the combined frames with 71 mm spacing, color - orange	10; 220	8595057624252

Example of using the top lighting hook to the horizontal casing



Cover KBV-1 (KBV-2) is mounted to the fixed horizontal part of the casing. Then body KBT-1 (KBT-2) is assembled and together with the base part KBS-3 it is pushed to the already fixed cover. Before pouring the concrete mix to the set of the bottom piece KBS-3, insert the nut KBM.

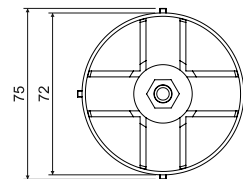
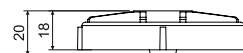
KBS-3

- bottom of the box into concrete



MAT
 PA -5 - +60(90)°C 650°C A1

- ☑ The bottom is suitable for covering the bodies of boxes KBT-1 and KBT-2.
- ☑ The design of the bottom allows the insertion of KBM nut for screwing the threaded hook eye.
- ☑ The nut must be inserted before pouring concrete over the assembly!



item	conf.	description	package	
			pcs	EAN
KBS-3	AA	packed in shrink foil, color - orange	10; 200	8595057608146

KBP-9; KBP-10, KBM - chandelier hook with nut and girdle**MAT**

steel



- ☑ Hook capacity of 250 N (25 kg).
- ☑ The hook should be fitted with an insulating sleeve made of PVC (included).
- ☑ Nut included.
- ☑ Brass nut with thread M5, designed for KBS-3 for subsequent mounting of the hook, can be used for KBP-9 and KBP-10.
- ☑ The nut should be inserted in the bottom of the box KBS-3 before pouring concrete!

item	conf.	description	package	
			pcs	EAN
KBP-9	XX	length of 100 mm, for assembly with box body KBT-2	40; 80	8595057610378
KBP-10	XX	length of 118 mm, for assembly with box body KBT-1	40; 80	8595057610361
KBM	XX	nut for chandelier hook, material - brass	40; 200	8595057626669

V 68 S

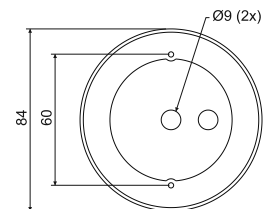
- cover

MAT

PVC -5 - +60(90)°C 850°C A1 - F 30 sec.



- ☑ For closing the box with the hook.
- ☑ It provides IP 20 protection.
- ☑ Two holes allow threading the light inlet and installation of the hook.
- ☑ Fixing with screws 2.9 x 13 (not included).



item	conf.	description	package	
			pcs	EAN
V 68 S	HB	packed in shrink foil in packages of 10 pieces	10; 120	8595057650541

Example of the KBV-3 cover usage



The KBV-3 cover is suitable when both sides of the wall shall be fitted with electronic devices against each other. The cover is designed for mounting together with KBT-1 or KBT-2 box and the KBV-1 or KBV-2 cover.

The cover allows to install the double-socket as well with the KBV-1 cover.

Height of the set when using the body (wall width):

- KBT-1 L1 = 100 mm
- KBT-2 L2 = 80 mm

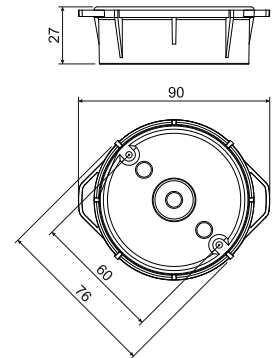
KBV-3 - cover of the box into concrete



MAT

PP -5-+60(90)°C 650°C A1

- ☑ Designed for installation in concrete partition walls with 100 mm thickness - in conjunction with KBT-1 and KBV-1 (KBV-2).
- ☑ Designed for installation in concrete partition walls with 80 mm thickness - in conjunction with KBT-2 and KBV-1 (KBV-2).



item	conf.	description		EAN
			pcs	
KBV-3	KB	packed in shrink foil, color - light grey	10; 120	8595057657151

KBP-8 - steel rod

MAT

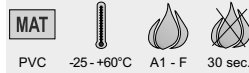
steel 3000



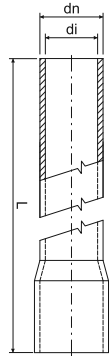
- ☑ To bracing the boxes between formwork walls when pouring concrete.
- ☑ Use together with lids and supports - see assembly diagrams.
- ☑ The rod must be cut to length - determining the length is specified for each assembly.

item	conf.	description		EAN
			m	
KBP-8	ZA	steel rod \varnothing 6 mm	3	8595057610231

Rigid wiring pipes



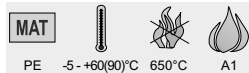
- ✓ Tough wiring pipe suitable as a spacer for boxes intended for installation in concrete.
- ✓ More information in the chapter "Wiring pipes".



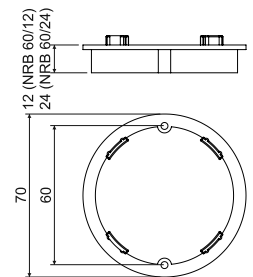
item	conf.	description	dn	di	L		EAN
			mm	mm	m	m	
1520	HA	low mechanical resistance, color - white	20	17,4	3	30; 1890	8595057619074
	KA	low mechanical resistance, color - light grey			3	30; 1890	8595057616905
	KC	low mechanical resistance, color - light grey			2	20; 1260	8595057613867
4020	KA	medium mechanical resistance, color - light grey	20	16,9	3	30; 1890	8595057689954
	KC	medium mechanical resistance, color - light grey			2	20; 1260	8595568903655
	LA	medium mechanical resistance, color - dark grey RAL 7012			3	30; 1890	8595057617018
8020	FA	high mechanical resistance, color - black	20	15,8	3	30; 1890	8595057617087
1520HF	FA	low mechanical resistance, UV stable, halogen-free , color - black	20	17,1	3	30; 1890	8595057626430
	KA	low mechanical resistance, halogen-free , color - light grey			3	30; 1890	8595057631861
4020HF	FA	medium mechanical resistance, UV stable, halogen-free , color - black	20	16,7	3	15	8595057688261
	KA	medium mechanical resistance, halogen-free , color - light grey			3	15	8595057690875
8020HF	FA	high mechanical resistance, UV stable, halogen-free , color - black	20	15,7	3	15	8595057688339

NRB 60...

- extending frame into concrete



- ✓ To adjust the box height when applying plaster.



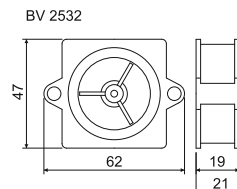
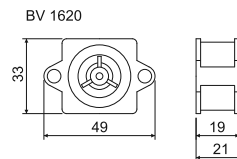
item	conf.	description		EAN
			pcs	
NRB 60/12	AB	packed in bags of 10 pieces	10; 340	8595057616455
NRB 60/24	AB	packed in bags of 10 pieces	10; 160	8595057616462

BV... - bushing for pipes



MAT
 PP -5 - +60(90)°C 650°C A1

- ☑ The glands are fixed to the formwork using nails.
- ☑ After hardening of the concrete mixture, formwork is removed together with front lid.
- ☑ To introduce the pipe, use BK-type fittings as per pipe dimension:
 BV 1620 - fittings BK 16, BK 20
 BV 2532 - fittings BK 25, BK 32, BK 16 ČSN, BK 23



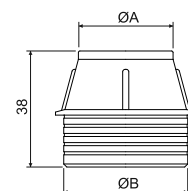
item	conf.	description		EAN
			pcs	
BV 1620	KA	for dimensioned pipes EN 16, 20	40; 560	8595057621985
BV 2532	KA	for dimensioned pipes EN 25, 32 and ČSN 16, 23	40; 280	8595057621992

BK... - ending for pipes



MAT
 PE -5 - +60(90)°C 650°C A1

- ☑ For insertion of pipes LPE-1 into the BV glands.



item	conf.	description	A	B		EAN
			mm	mm	pcs	
BK 16	AA	for dimensioned pipes EN 16	19	27	40; 600	8595057621688
BK 16 ČSN	AA	for dimensioned pipes ČSN 16	24	40	40; 320	8595057629165
BK 20	AA	for dimensioned pipes EN 20	23	27	40; 560	8595057621718
BK 23	AA	for dimensioned pipes ČSN 23	30	40	40; 280	8595057629158
BK 25	AA	for dimensioned pipes EN 25	28	40	40; 320	8595057621701
BK 32	AA	for dimensioned pipes EN 32	35	40	40; 320	8595057621695

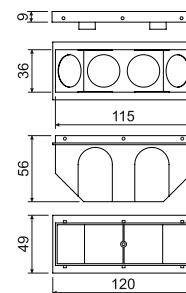
KBS-120

- spacer into concrete



MAT			
PE	-5 - +60(90)°C	650°C	A1

- ✓ For outlet of multiple piping into one place (e.g. at the location of future distribution systems).
- ✓ Box cover is fixed to the formwork using nails or screws.
- ✓ After solidification, remove the front rip-out part of the lid.



item	conf.	description		EAN
			pcs	
KBS-120	AB	packed in shrink foil, color - orange	10; 70	8595057624269

The KBV cover fixed to boarding.



Flexible pipes installed into KBT body.



Sealing the penetrations (mastic).



Example of usage the busing and ending.



Example of usage for horizontal boarding.



The KBT... box with terminated conductor ready for mounting the KBP... chandelier hook.



The KBT... box covered with the V 68 S cover with terminated conductor and KBP... chandelier hook.



